



# **Crime Analysis Report April 2011**

**Prepared by Det. Sgt. John Dunn #64**

CALEA 15.3.1

# Table of Contents

Crime Analysis Definition.....	3
Crime Analysis Narrative Report.....	4
Appendix A (Crime Graph).....	6
Appendix B (Burglary Graph).....	7
Appendix C (Criminal Mischief Graph).....	8
Appendix D (Larceny Graph) .....	9

## Crime Analysis

A set of systematic, analytical processes directed at providing timely and pertinent information relative to crime patterns and trend correlations to assist the operational and administrative personnel in planning the deployment of resources for the prevention and suppression of criminal activities, aiding the investigative process, and increasing apprehensions and the clearance of cases. Within this context, Crime Analysis supports a number of department functions including patrol deployment, special operations, and tactical units, investigations, planning and research, crime prevention, and administrative services (budgeting and program planning). --Steven Gottlieb et al., 1994, "Crime Analysis: From First Report to Final Arrest."

*TO: Office of the Chief*

*FROM: Det. Sgt. John Dunn*

*SUBJECT: Crime Analysis Report April 2011*

*During the month of April 2011. The Guilford Police Department had the following Part 1 and selected **Part 2** Crimes reported: Reference Appendix A for further information. This information was compiled via the AS400 system utilizing a query of all Part 1 Crimes and select Part 2 crimes from the computer database. A full review of each queried case file report was completed.*

A user friendly interactive website is available through [www.crimereports.com](http://www.crimereports.com) In addition to the information and graphs listed below. The crime reports link also catalogs and provides crime graphs and trends which allow officers and supervisors to better direct their patrols in preventing crime in the town. The crime reports site links all calls for service in the town.

The Guilford Police Department investigated **941** cases for the month of April.

### **Burglary Cases**

There were a total of (8) burglary cases filed, seven were forced, and six were residential in nature. Two were commercial. One was solved with no arrest. None of the cases had a distinct pattern or M.O. Reference Appendix B for a graphic representation

### **Criminal Mischief Cases:**

There were a total of (9) criminal mischief cases filed; (5) were private property, and (4) were mailbox damage. Two of the cases were solved with no arrest. None of the cases had a distinct pattern or modes operandi. . Reference Appendix C for a graphic representation.

**Larceny Cases:**

There were a total of (26) larceny complaints filed. A detailed examination of these cases revealed the following details: Of the twenty-six cases, (14) were solved. Nine of the solved cases were via arrest or currently have warrants pending. A total breakdown of the types of larceny cases are as follows: (10) general larceny cases, (4) thefts from vehicles, (4) theft from building, (5) shoplifting, and (3) stolen motor vehicles. None of the cases has a distinct pattern or mode operandi. Reference Appendix D for a graphic representation.

**Robbery Cases:**

None Reported

**Arson Cases:**

**Rape Cases:**

In accordance with Connecticut General Statutes details of all sexual assault cases details remain sealed.

**Murder Cases:**

None reported

**Information and Intelligence received on criminal activity:**

CTIC provided LEO intelligence during this month.

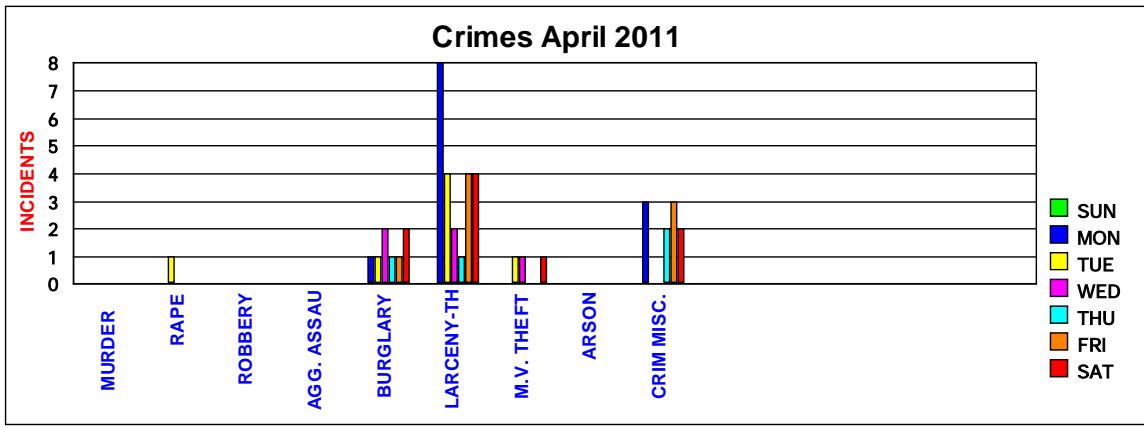
Intelligence meetings and legal update briefings were held at the New Haven County Investigative Briefing, as well as the Middlesex County Detective Association and the Shoreline Detectives in regard to on-going criminal activity in all our jurisdictions.

Sincerely,

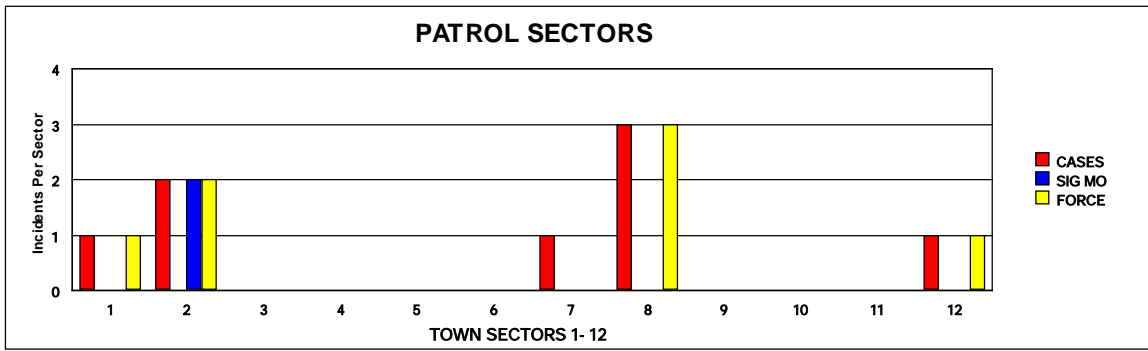
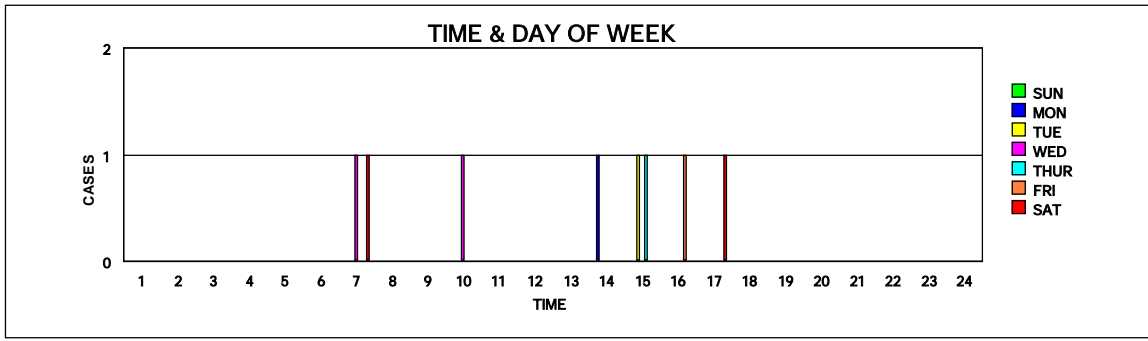
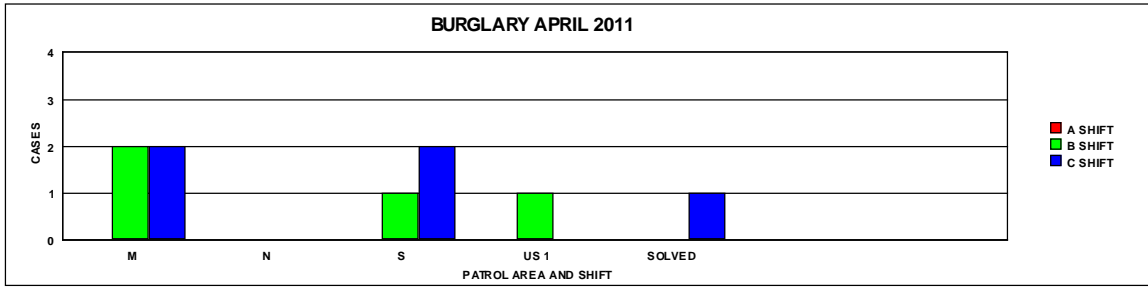
*Det. Sgt. John Dunn #64  
Detective Unit Supervisor*

**Appendix A**

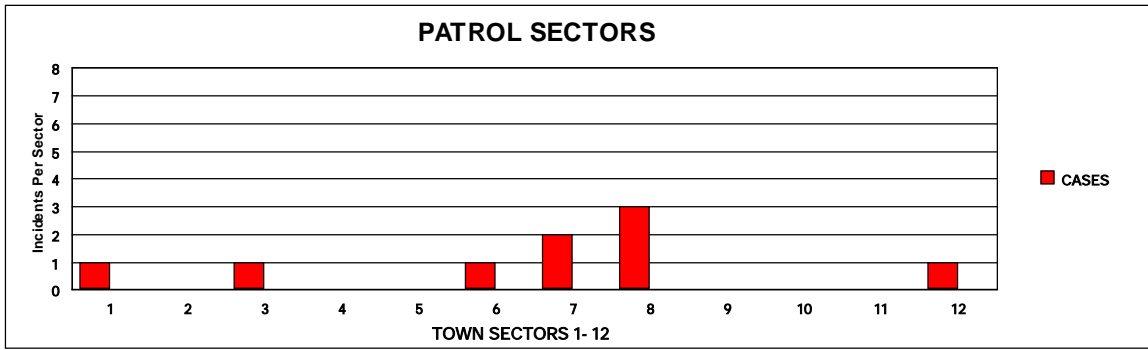
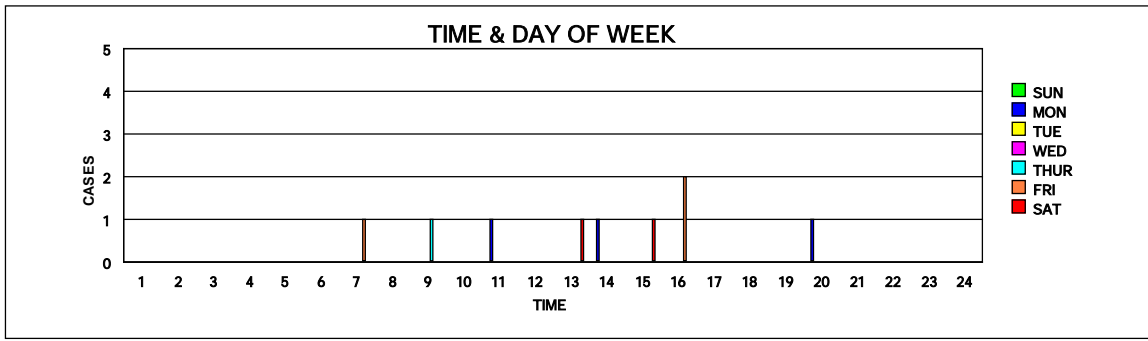
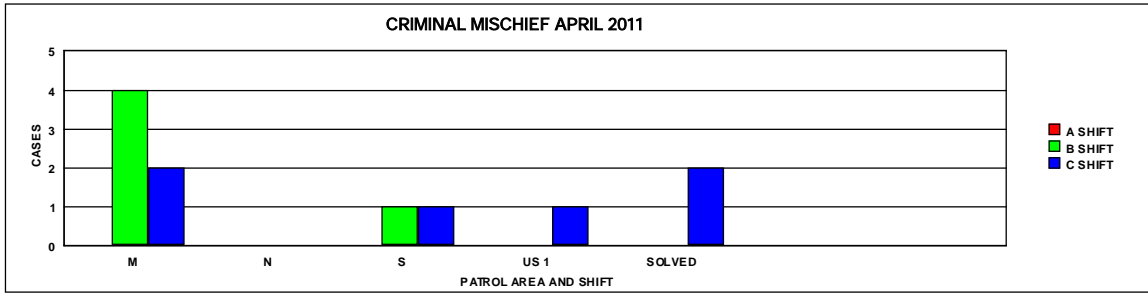
	SUN	MON	TUE	WED	THU	FRI	SAT	TOTAL
<b>MURDER</b>								
<b>RAPE</b>			1					1
<b>ROBBERY</b>								
<b>AGG. ASSAULT</b>								
<b>BURGLARY</b>		1	1	2	1	1	2	8
<b>LARCENY-THEFT</b>		8	4	2	1	4	4	23
<b>M.V. THEFT</b>			1	1			1	3
<b>ARSON</b>								
<b>CRIM MISC.</b>	0	3			2	3	2	9



## Appendix B



## Appendix C





## Appendix D

