



Crime Analysis Report January 2013

Prepared by Det. Sgt. Jeffrey Provencher /68

CALEA 15.3.1

Table of Contents

Crime Analysis Definition.....	3
Crime Analysis Narrative Report.....	4
Appendix A (Crime Graph).....	6
Appendix B (Burglary Graph).....	7
Appendix C (Criminal Mischief Graph).....	8
Appendix D (Larceny Graph)	9

Crime Analysis

A set of systematic, analytical processes directed at providing timely and pertinent information relative to crime patterns and trend correlations to assist the operational and administrative personnel in planning the deployment of resources for the prevention and suppression of criminal activities, aiding the investigative process, and increasing apprehensions and the clearance of cases. Within this context, Crime Analysis supports a number of department functions including patrol deployment, special operations, and tactical units, investigations, planning and research, crime prevention, and administrative services (budgeting and program planning). --Steven Gottlieb et al., 1994, "Crime Analysis: From First Report to Final Arrest."

TO: Office of the Chief

FROM: Det. Sgt. Jeffrey Provencher

SUBJECT: Crime Analysis Report January 2013

*During the month of December 2012. The Guilford Police Department had the following **Part 1** and selected **Part 2** Crimes reported: Reference Appendix A for further information. This information was compiled via the AS400 system utilizing a query of all Part 1 Crimes and select Part 2 crimes from the computer database. A full review of each queried case file report was completed.*

The Guilford Police Department investigated **890** cases for the month of January.

Murder Cases:

None reported.

Sexual Assault:

None Reported.

Robbery Cases:

There was (1) Robbery reported, and the suspect was arrested.

Aggravated Assault

There was (1) Aggravated Assault complaints reported. It was domestic in nature and an arrest was made.

Burglary Cases

There were (3) burglary cases filed. They were all reported to have used force involved and an arrest was made in (1) case. Reference Appendix B for a graphic representation.

Larceny Cases:

There were a total of (8) larceny complaints filed. (3) Were shopliftings, (2) thefts from buildings, (1) theft from a motor vehicle and (2) general larcenies. There were arrests made in (4) of the cases and (3) others had cases solved with no arrest. Reference Appendix C for a graphic representation.

Motor Vehicle Thefts:

None Reported.

Arson Cases:

None Reported

Criminal Mischief Cases:

There were a total of (3) criminal mischief complaints filed, (1) was damage caused by a motor vehicle and (2) were mailbox damage. No arrests were made. Reference Appendix D for a graphic representation.

Information and Intelligence received on criminal activity:

CTIC provided LEO intelligence during this month.

Intelligence meetings and legal update briefings were held at the New Haven County Investigative Briefing, as well as the Middlesex County Detective Association and the Shoreline Detectives in regard to on-going criminal activity in all our jurisdictions.

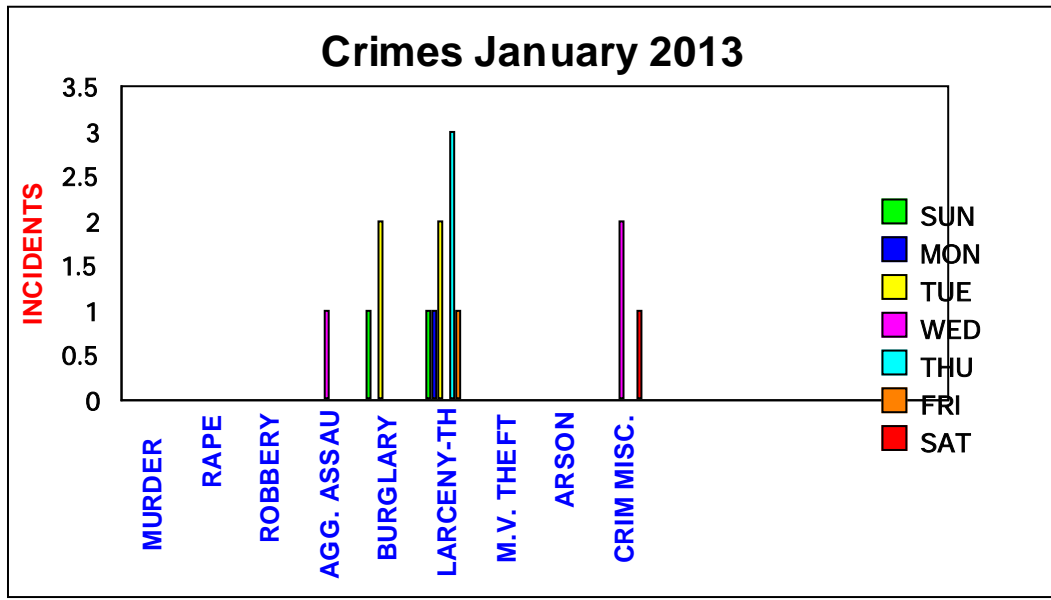
Sincerely,

Det. Sgt. Jeffrey Provencher /68

Appendix-A

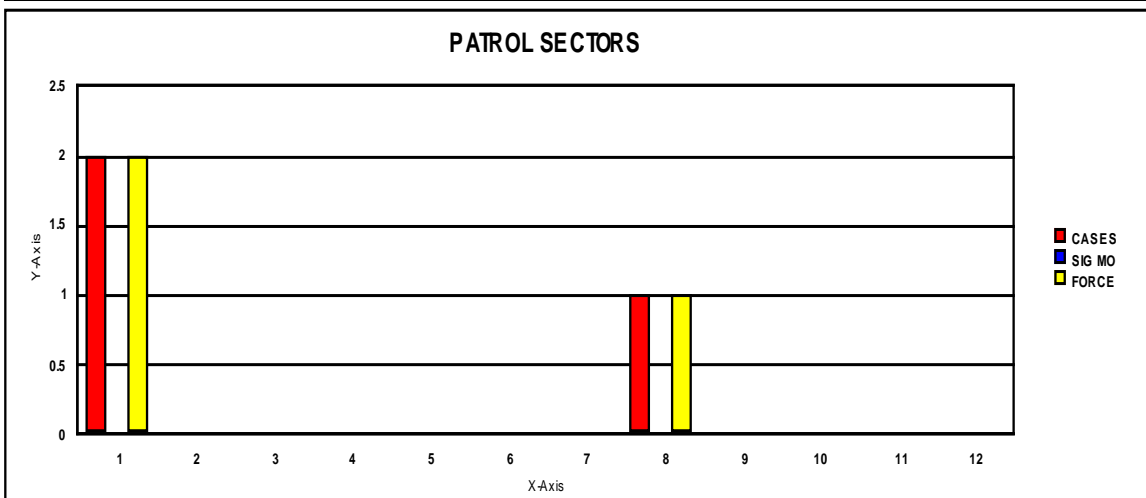
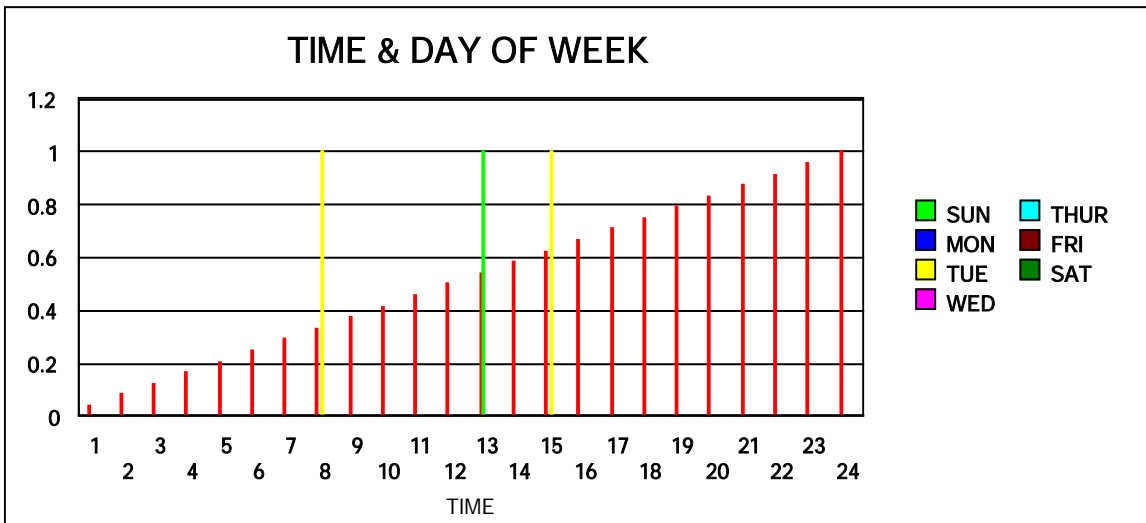
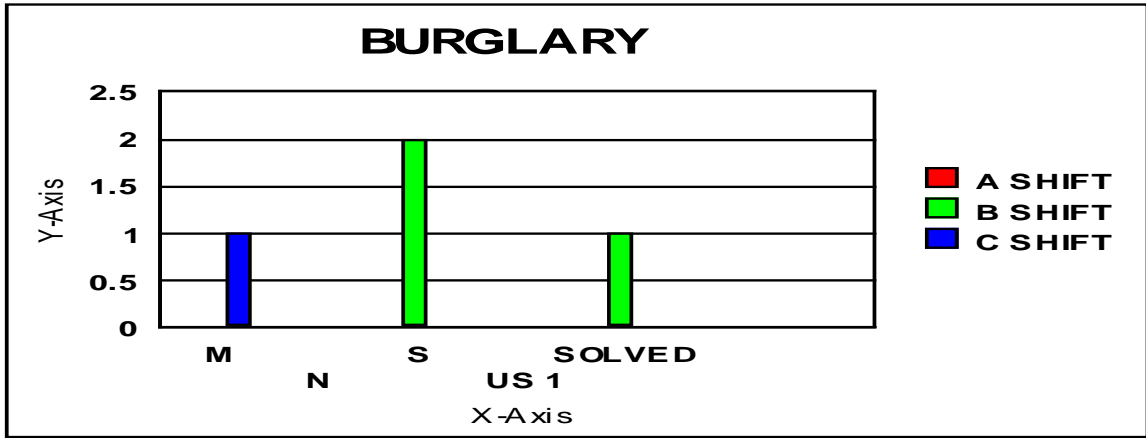
**CRIMES JANUARY
2013**

	SUN	MON	TUE	WED	THU	FRI	SAT	TOTAL
MURDER								
RAPE								
ROBBERY								
AGG. ASSAULT				1				1
BURGLARY	1		2					3
LARCENY-THEFT	1	1	2		3	1		8
M.V. THEFT								
ARSON								
CRIM MISC.				2			1	3



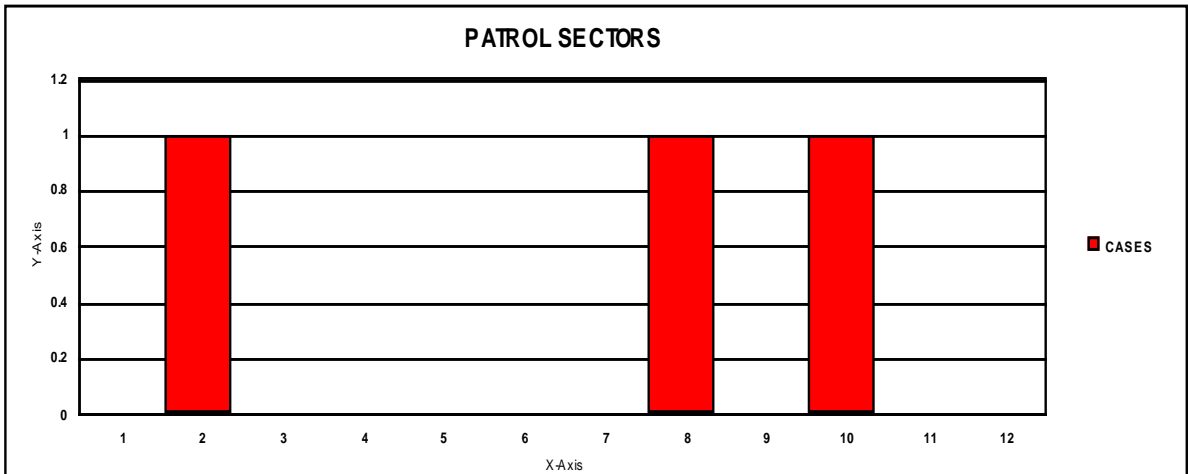
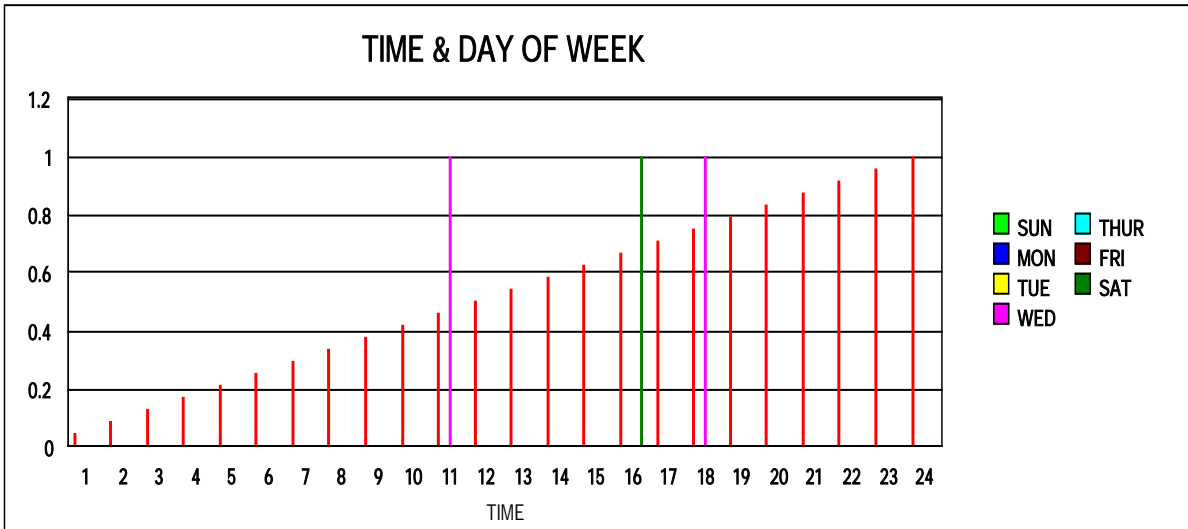
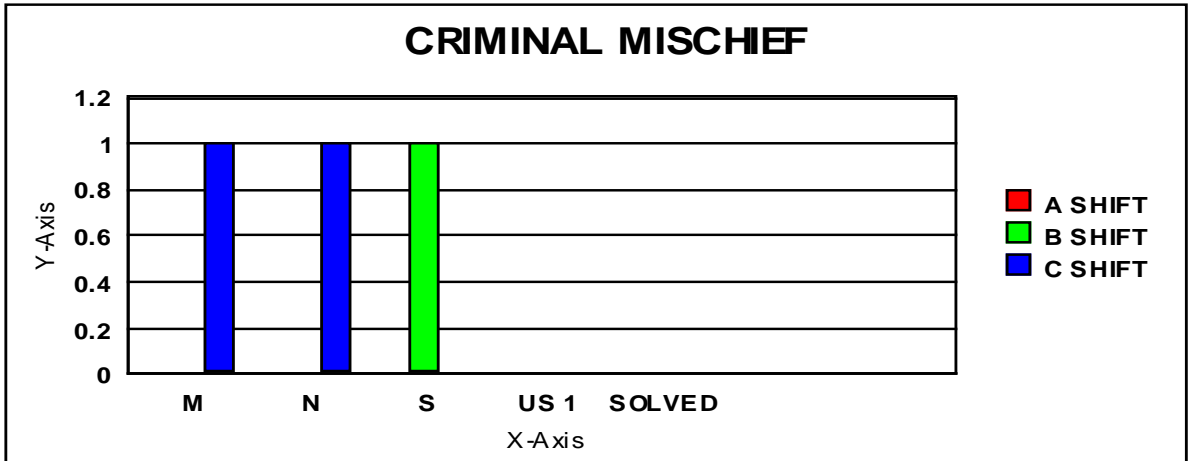
Appendix B

BURGLARY



Appendix C

CRIMINAL MISCHIEF



Appendix D

LARCENY

