



## **Crime Analysis Report March 2012**

**Prepared by Sgt. Jeffrey Provencher /68**

CALEA 15.3.1

# Table of Contents

Crime Analysis Definition.....	3
Crime Analysis Narrative Report.....	4
Appendix A (Crime Graph).....	6
Appendix B (Burglary Graph).....	7
Appendix C (Criminal Mischief Graph).....	8
Appendix D (Larceny Graph) .....	9

## Crime Analysis

A set of systematic, analytical processes directed at providing timely and pertinent information relative to crime patterns and trend correlations to assist the operational and administrative personnel in planning the deployment of resources for the prevention and suppression of criminal activities, aiding the investigative process, and increasing apprehensions and the clearance of cases. Within this context, Crime Analysis supports a number of department functions including patrol deployment, special operations, and tactical units, investigations, planning and research, crime prevention, and administrative services (budgeting and program planning). --Steven Gottlieb et al., 1994, "Crime Analysis: From First Report to Final Arrest."

*TO: Office of the Chief*

*FROM: Sgt. Jeffrey Provencher*

*SUBJECT: Crime Analysis Report March 2012*

*During the month of March 2012. The Guilford Police Department had the following Part 1 and selected **Part 2** Crimes reported: Reference Appendix A for further information. This information was compiled via the AS400 system utilizing a query of all Part 1 Crimes and select Part 2 crimes from the computer database. A full review of each queried case file report was completed.*

The Guilford Police Department investigated **764** cases for the month of March.

### **Burglary Cases**

There were a total of (6) burglary cases filed, four were forced, all were residential in nature, one of which is solved and warrants are pending. One of the residences was burglarized twice during this same month. None of the cases has a distinct pattern or mode operandi. Reference Appendix B for a graphic representation

### **Criminal Mischief Cases:**

There were a total of (13) criminal mischief cases filed; (4) were mailbox damage, (7) were private property, and (2) were public property. None of the cases were solved. None of the cases were similar, however one two of the cases were linked as a mailbox was utilized to damage a vehicle. Reference Appendix C for a graphic representation

### **Larceny Cases:**

There were a total of (13) larceny complaints filed. A detailed examination of these cases revealed the following details: Of the ten cases, (4) were solved. Three were solved via arrest or have warrants pending review at court. A total breakdown of the types of larceny cases are as follows: (5) general larceny cases, (4) thefts from vehicles, and (4) shoplifting. None of the cases has a distinct pattern or mode operandi. Reference Appendix D for a graphic representation.

**Robbery Cases:**

None Reported.

**Arson Cases:**

None Reported

**Rape Cases:**

In accordance with Connecticut General Statutes details of all sexual assault cases details remain sealed.

**Murder Cases:**

None reported

**Information and Intelligence received on criminal activity:**

CTIC provided LEO intelligence during this month.

Intelligence meetings and legal update briefings were held at the New Haven County Investigative Briefing, as well as the Middlesex County Detective Association and the Shoreline Detectives in regard to on-going criminal activity in all our jurisdictions.

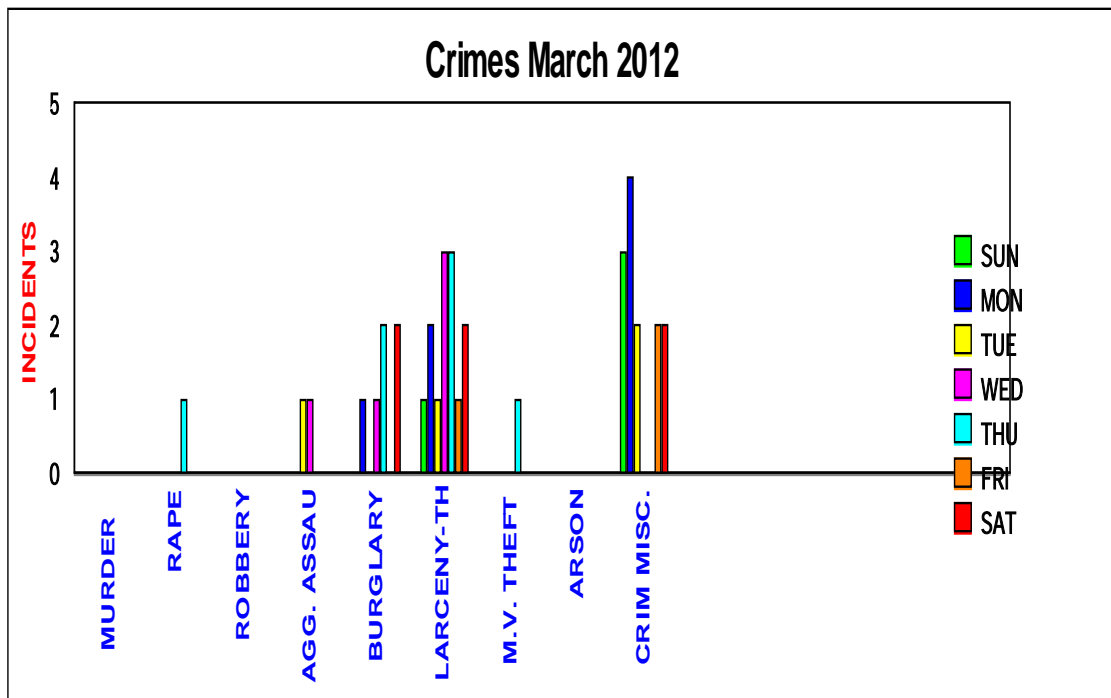
Sincerely,

*Sgt. Jeffrey Provencher /68*

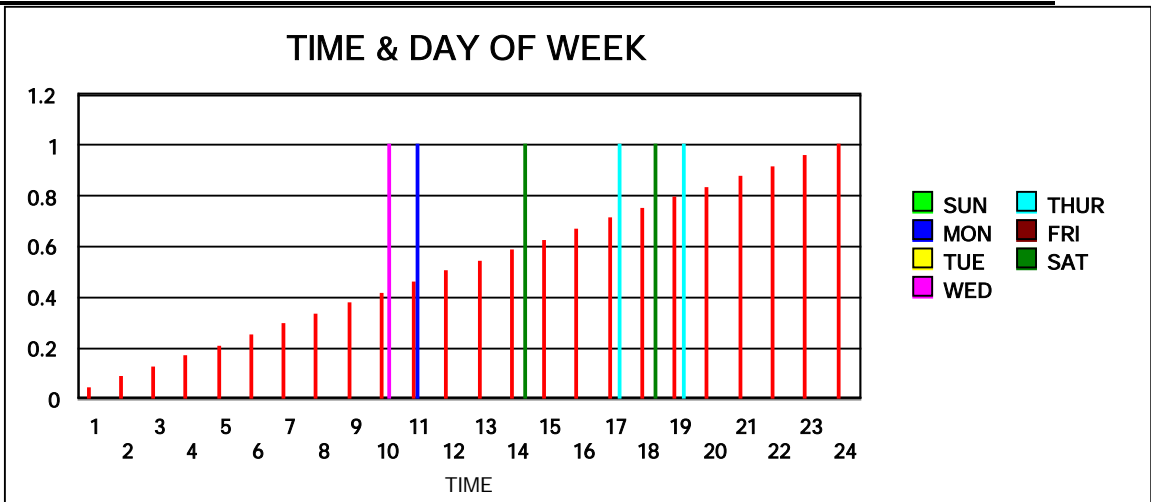
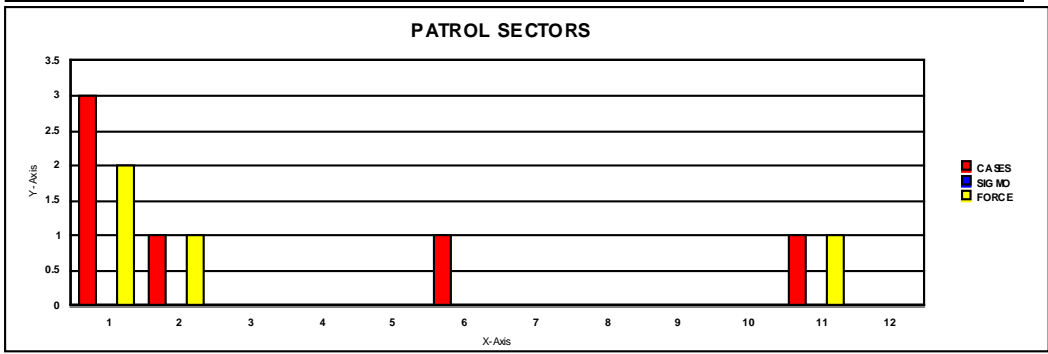
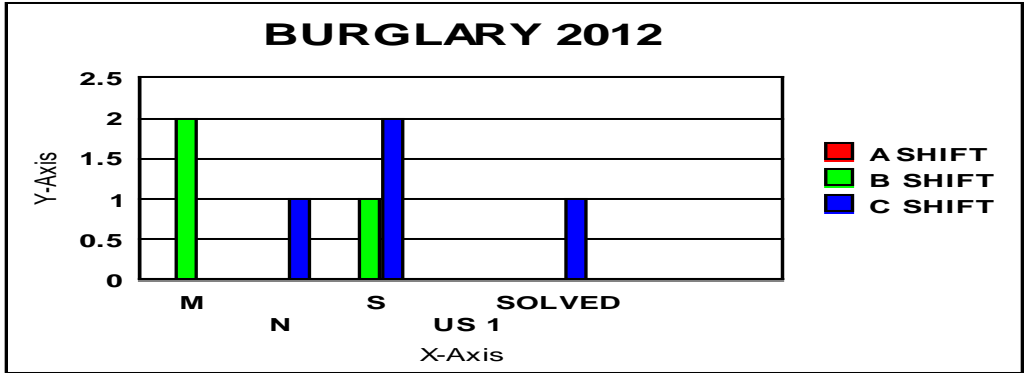
**Appendix A**

**CRIMES  
MARCH  
2012**

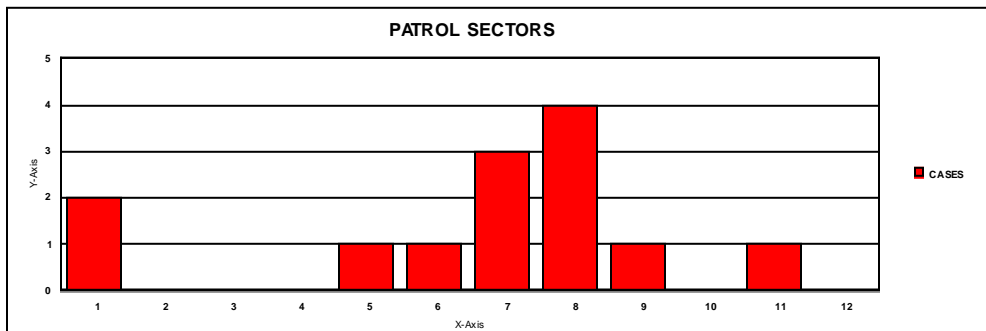
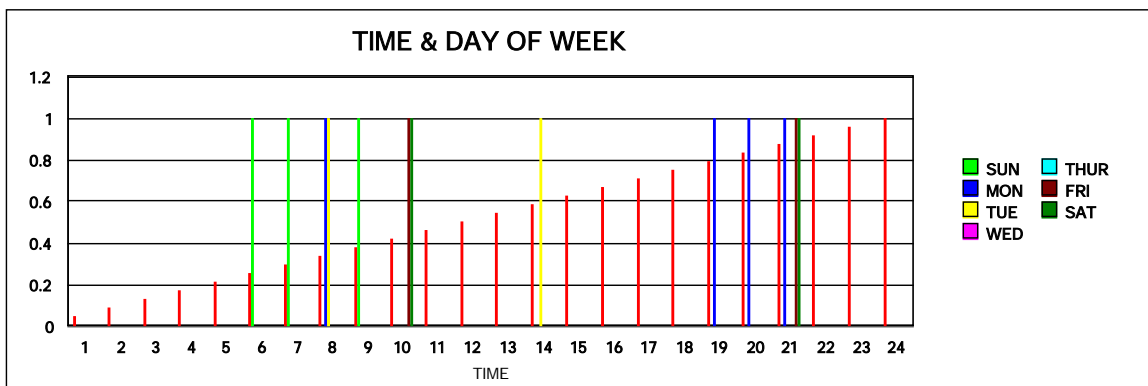
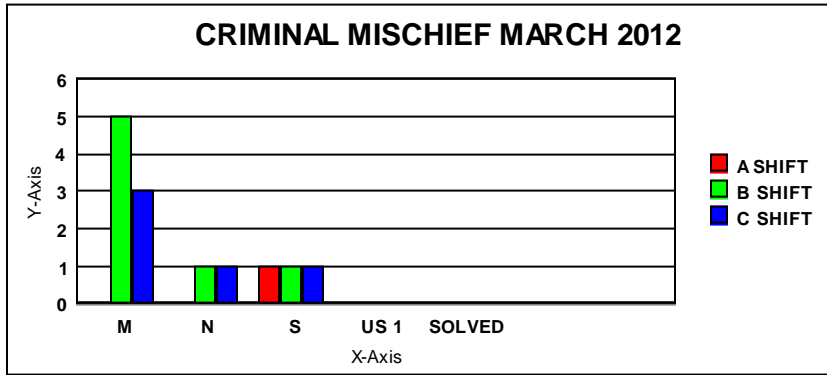
	SUN	MON	TUE	WED	THU	FRI	SAT	TOTA
MURDER								
RAPE						1		1
ROBBERY								
AGG. ASSAULT			1	1				2
BURGLARY		1		1	2		2	6
LARCENY -THEFT		1	2	1	3	3	1	13
M.V. THEFT					1			1
ARSON								
CRIM MISC.	3	4	2			2	2	13



**Appendix B**



# Appendix C





## Appendix D

