



# **Crime Analysis Report April 2012**

**Prepared by Sgt. Jeffrey Provencher /68**

CALEA 15.3.1

# Table of Contents

Crime Analysis Definition.....	3
Crime Analysis Narrative Report.....	4
Appendix A (Crime Graph).....	6
Appendix B (Burglary Graph).....	7
Appendix C (Criminal Mischief Graph).....	8
Appendix D (Larceny Graph) .....	9

## Crime Analysis

A set of systematic, analytical processes directed at providing timely and pertinent information relative to crime patterns and trend correlations to assist the operational and administrative personnel in planning the deployment of resources for the prevention and suppression of criminal activities, aiding the investigative process, and increasing apprehensions and the clearance of cases. Within this context, Crime Analysis supports a number of department functions including patrol deployment, special operations, and tactical units, investigations, planning and research, crime prevention, and administrative services (budgeting and program planning). --Steven Gottlieb et al., 1994, "Crime Analysis: From First Report to Final Arrest."

*TO: Office of the Chief*

*FROM: Sgt. Jeffrey Provencher*

*SUBJECT: Crime Analysis Report April 2012*

*During the month of April 2012. The Guilford Police Department had the following **Part 1** and selected **Part 2** Crimes reported: Reference Appendix A for further information. This information was compiled via the AS400 system utilizing a query of all Part 1 Crimes and select Part 2 crimes from the computer database. A full review of each queried case file report was completed.*

The Guilford Police Department investigated **874** cases for the month of April.

**Murder Cases:**

None reported

**Rape Cases:**

In accordance with Connecticut General Statutes details of all sexual assault cases details remain sealed.

**Robbery Cases:**

There were a total of (3) Robbery complaints filed. There was (1) involving a weapon being displayed and (2) were strong arm type, one of which the parties knew each other. Two of the cases were cleared with arrests and the third remains unsolved with no similarities to other cases in the area.

**Aggravated Assault**

There were a total of (2) aggravated assault complaints filed. Both offenders were known to the victims and arrests were made in both cases.

**Burglary Cases**

There were a total of (2) burglary cases filed, both were non-forced and both were solved with arrests already made. Reference Appendix B for a graphic representation.

**Larceny Cases:**

There were a total of (17) larceny complaints filed. A detailed examination of these cases revealed the following details: Of the seventeen cases, (9) were solved. Four were solved via arrest or have warrants pending review at court. A total breakdown of the types of larceny cases are as follows: (9) general larceny cases, (5) thefts from vehicles, and (3) shoplifting. None of the cases have a distinct pattern or mode operandi. Reference Appendix D for a graphic representation.

**Arson Cases:**

None Reported

**Criminal Mischief Cases:**

There were a total of (9) criminal mischief cases filed; (3) were mailbox damage, (3) were damage to vehicles. (8) were private property, and (1) was public property. None of the cases were solved; however, one had the charges dropped before an arrest was made. None of the cases were similar. Reference Appendix C for a graphic representation.

**Information and Intelligence received on criminal activity:**

CTIC provided LEO intelligence during this month.

Intelligence meetings and legal update briefings were held at the New Haven County Investigative Briefing, as well as the Middlesex County Detective Association and the Shoreline Detectives in regard to on-going criminal activity in all our jurisdictions.

Sincerely,

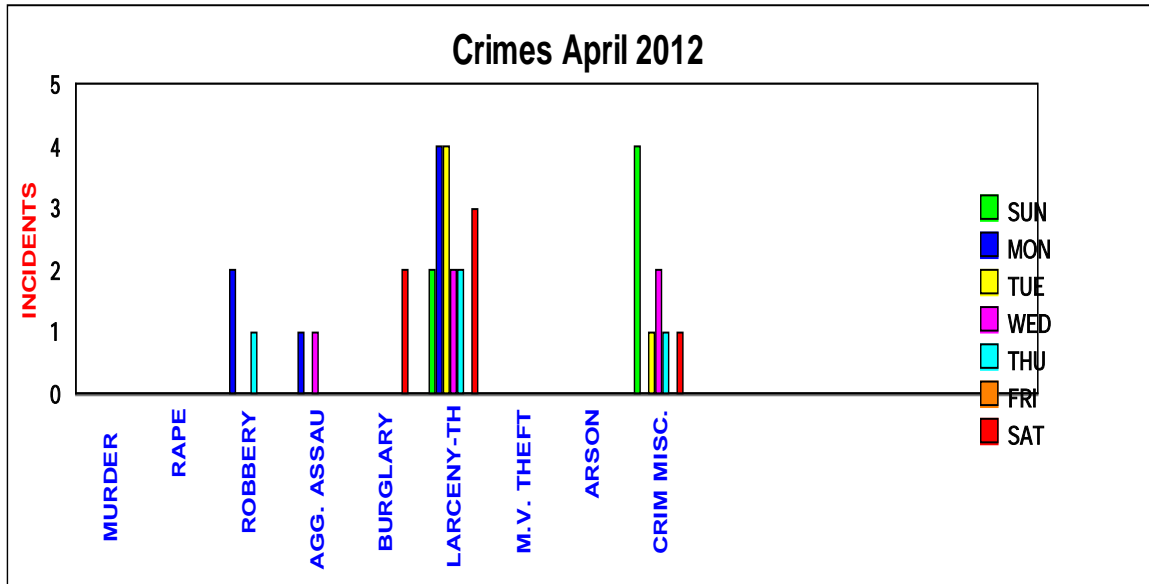
*Sgt. Jeffrey Provencher /68*

**Appendix A**

**CRIMES**

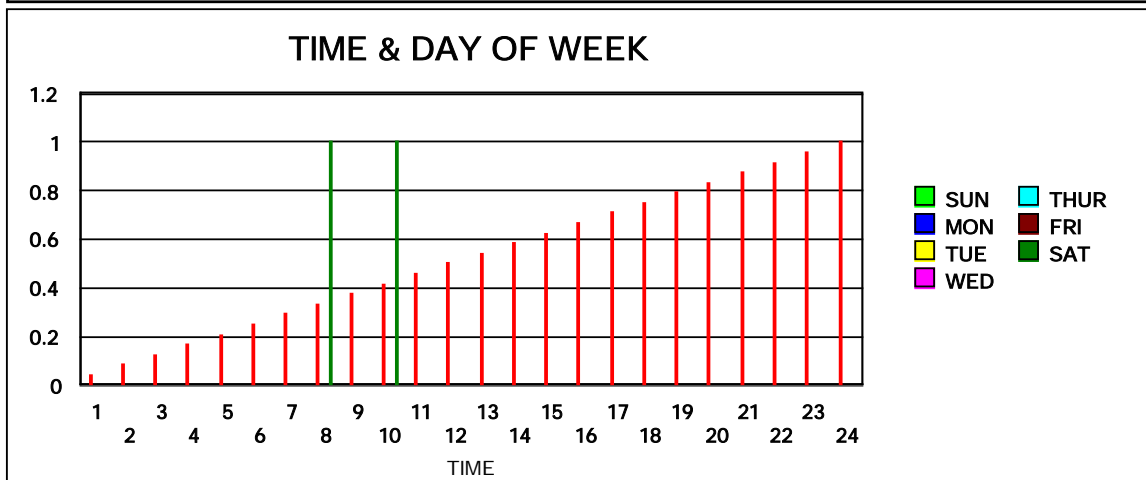
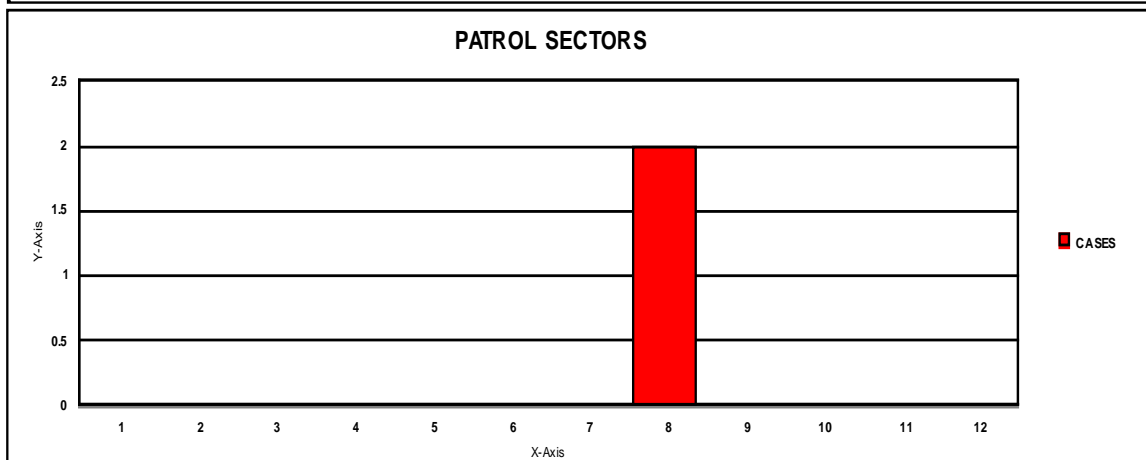
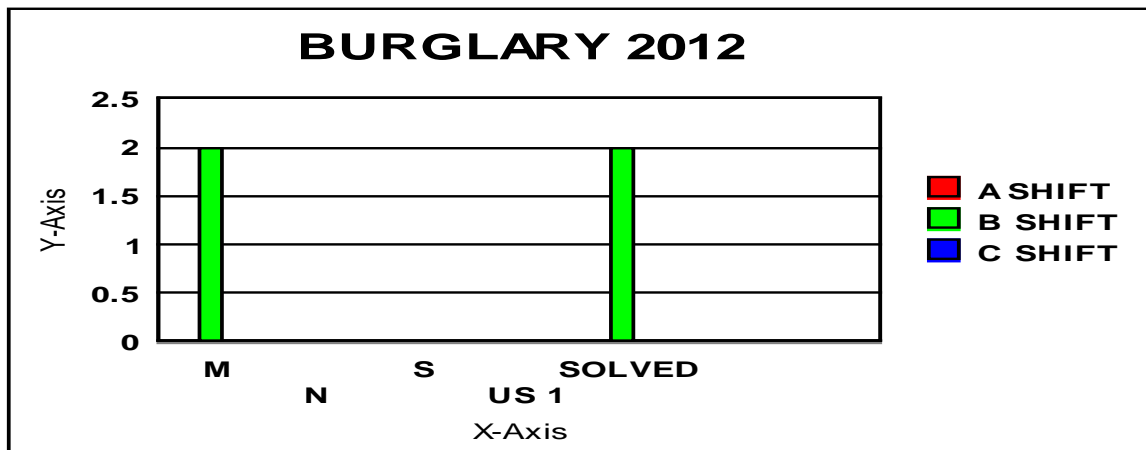
April  
2012

	SUN	MON	TUE	WED	THU	FRI	SAT	TOTA
<i>MURDER</i>								
<i>RAPE</i>								
<i>ROBBERY</i>			2			1		3
<i>AGG.</i>		1		1				2
<i>ASSAULT</i>								
<i>BURGLARY</i>							2	2
<i>LARCENY- THEFT</i>		2	4	4	2	2	3	17
<i>M.V. THEFT</i>								
<i>ARSON</i>								
<i>CRIM MISC.</i>	4		1	2	1		1	9



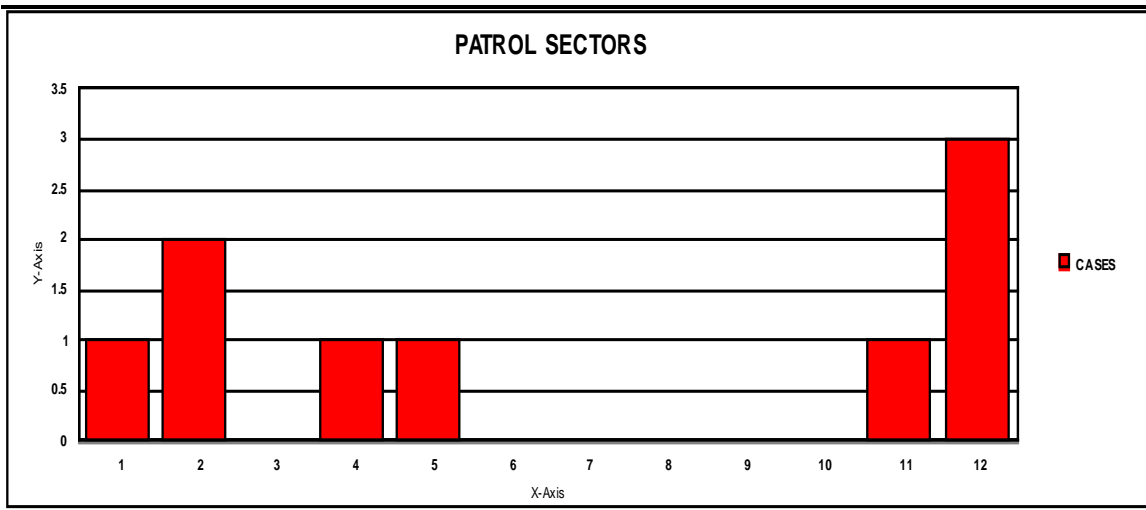
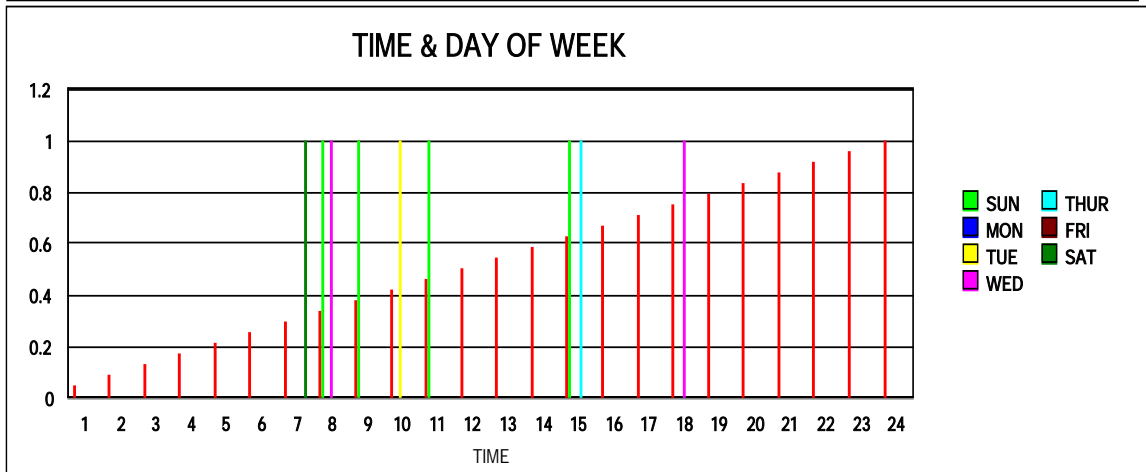
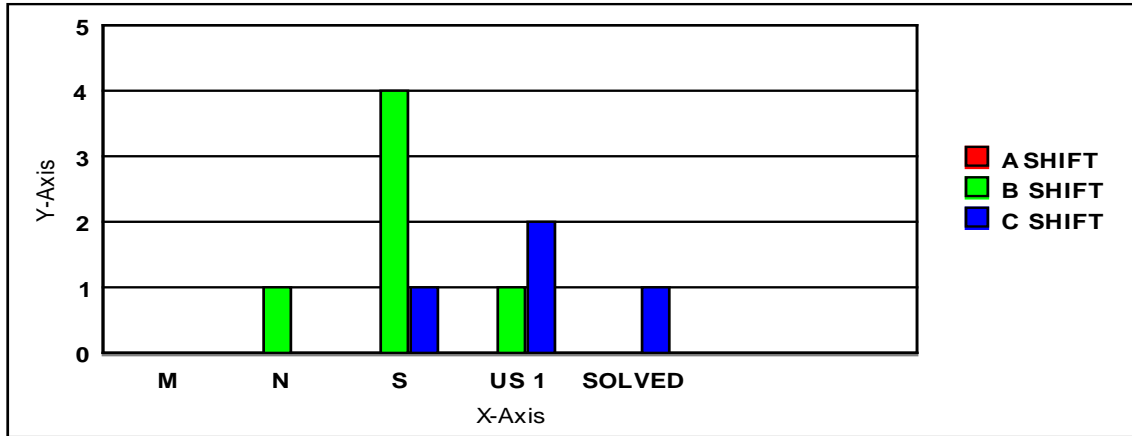
**Appendix B**

**BURGLARY**



**Appendix C**

**CRIMINAL MISCHIEF**



**Appendix D**

**LARCENY**

