



Crime Analysis Report June 2008

Prepared by Det. Sgt. John Dunn #64

Table of Contents

Crime Analysis Definition.....	3
Crime Analysis Narrative Report.....	4
Appendix A (Crime Graph).....	6
Appendix B (Burglary Graph).....	7 & 8
Appendix C (Criminal Mischief Graph).....	9 & 10
Appendix D (Larceny Graph)	11 & 12

Crime Analysis

A set of systematic, analytical processes directed at providing timely and pertinent information relative to crime patterns and trend correlations to assist the operational and administrative personnel in planning the deployment of resources for the prevention and suppression of criminal activities, aiding the investigative process, and increasing apprehensions and the clearance of cases. Within this context, Crime Analysis supports a number of department functions including patrol deployment, special operations, and tactical units, investigations, planning and research, crime prevention, and administrative services (budgeting and program planning). --Steven Gottlieb et al., 1994, "Crime Analysis: From First Report To Final Arrest."

TO: Office of the Chief

FROM: Det. Sgt. John Dunn

SUBJECT: Crime Analysis Report June 2008

*During the month of June 2008. The Guilford Police Department had the following **Part 1** and selected **Part 2** Crimes reported: Reference Appendix A for further information.*

Burglary Cases

There were a total of five (5) burglaries reported during this period. Four (4) residential and (1) commercial. Of these five burglaries a total of one (1) was solved. The case that was solved as a commercial burglary where the subject was caught in the act by a police officer on sector patrol. None of the cases showed a distinct pattern and modes operandi was found. *Reference Appendix B for a graph representation.*

Criminal Mischief Cases:

Twenty-Seven (27) criminal mischief cases were filed; Twenty-One were private property or mailbox damage, six were public property. Four cases were solved with two resulting in arrests. The remaining solved cases were handled between the complainants and the subjects. No similarities in cases were found. There was no distinct patterns or modes operandi (MO) in any of these cases. . *Reference Appendix C for a graph representation.*

Larceny Cases:

Thirty-Sixty (36) larceny complaints were filed. A detailed examination of these cases revealed the following details: Of the thirty-six cases, a total of nine larceny cases were solved. With three cases resulting in arrests. The remaining solved cases were handled between the complainant and the subjects. In the remaining unsolved cases no distinct patterns or modes operandi was found. *Reference Appendix D for a graph representation.*

Robbery Cases:

None reported

Murder Cases:

None reported

Rape Cases:

None reported.

Arson Cases:

None reported

Information and Intelligence received on criminal activity:

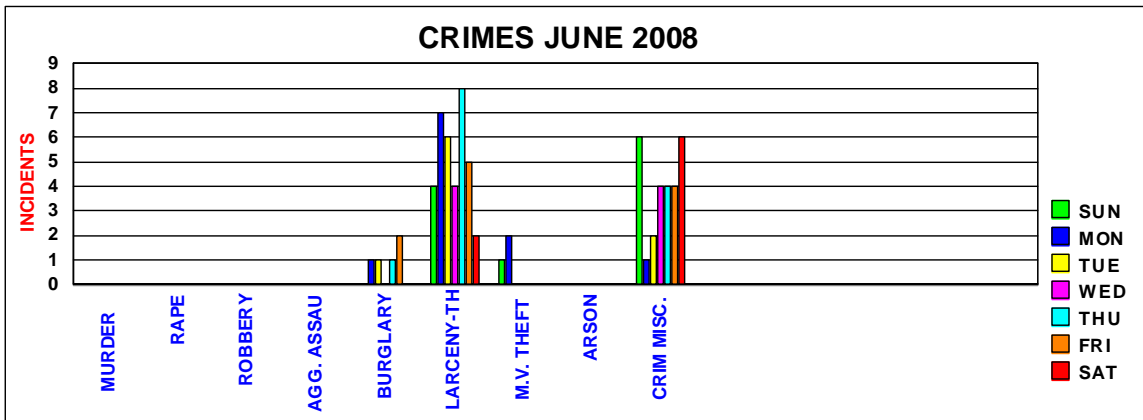
CTIC provided LEO intelligence during this month.

Sincerely,

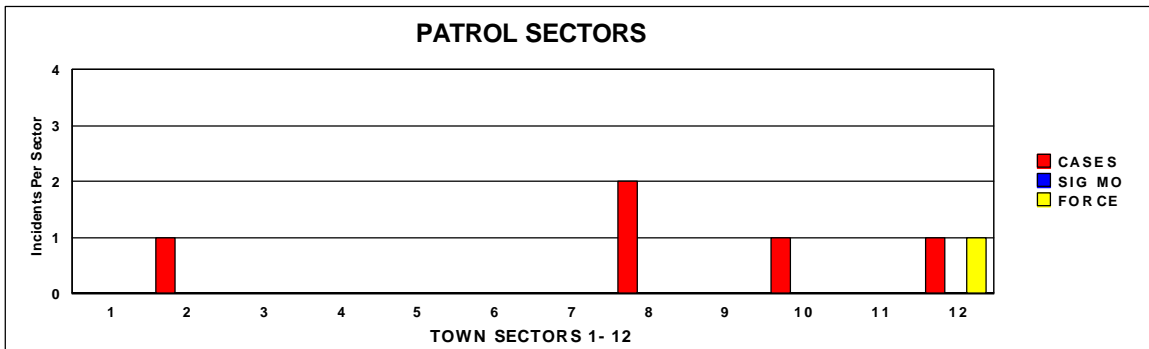
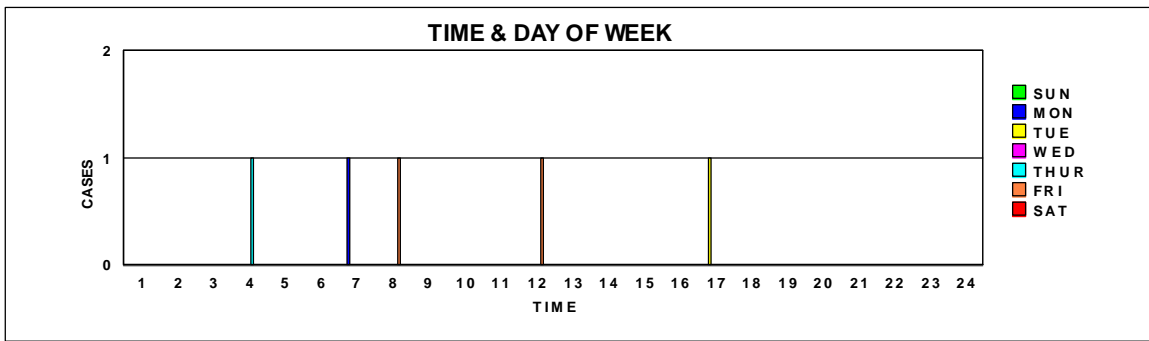
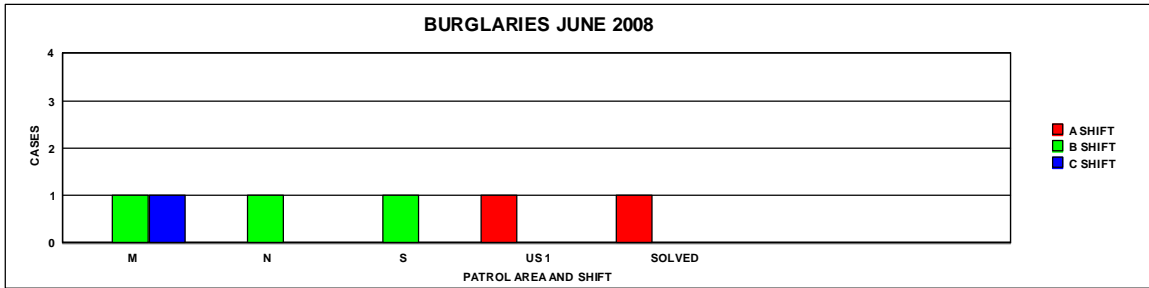
*Det. Sgt. John Dunn #64
Detective Unit Supervisor*

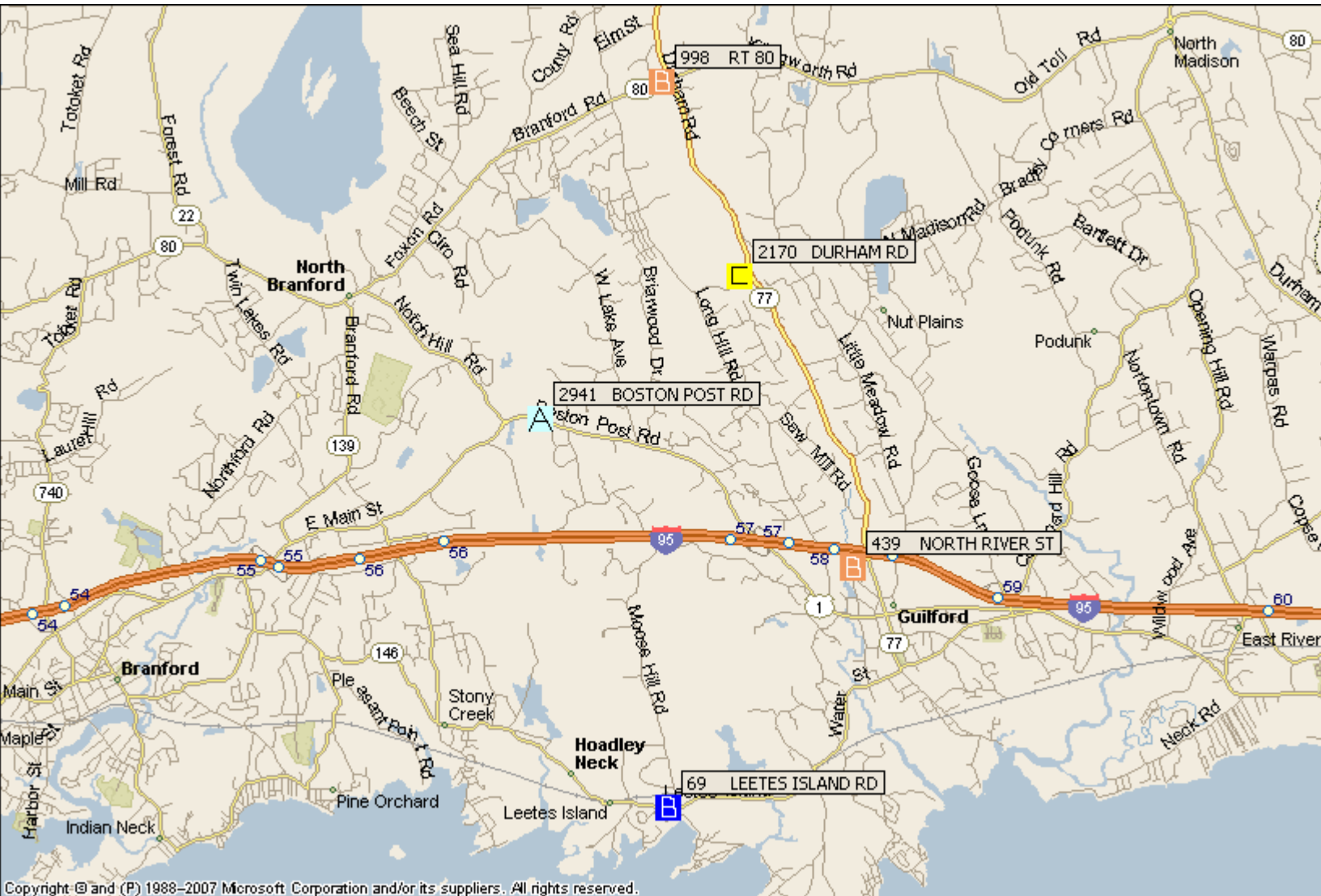
Appendix A

CRIMES JUNE 2008											
		SUN	MON	TUE	WED	THU	FRI	SAT	TOTAL		
MURDER		0	0	0	0	0	0	0	0	0	
RAPE		0	0	0	0	0	0	0	0	0	
ROBBERY		0	0	0	0	0	0	0	0	0	
AGG. ASSAULT		0	0	0	0	0	0	0	0	0	
BURGLARY		0	1	1	0	1	2	0	5		
LARCENY-THEFT		4	7	6	4	8	5	2	36		
M.V. THEFT		1	2	0	0	0	0	0	3		
ARSON		0	0	0	0	0	0	0	0		
CRIM MISC.		6	1	2	4	4	4	6	27		



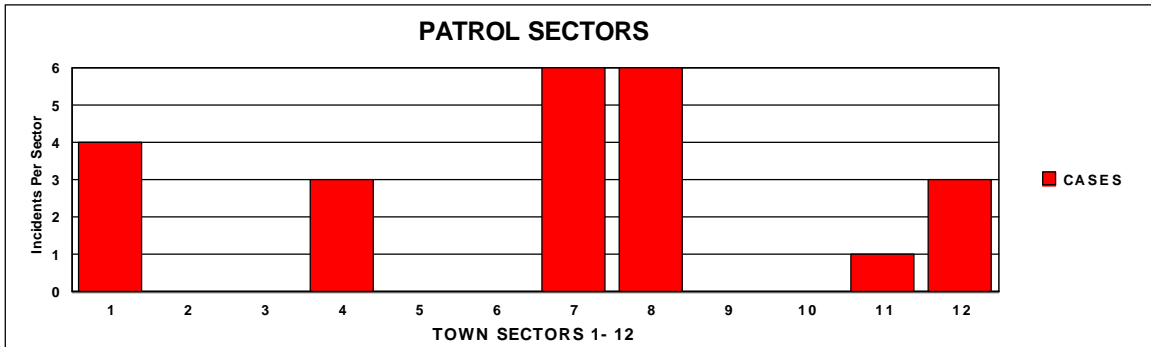
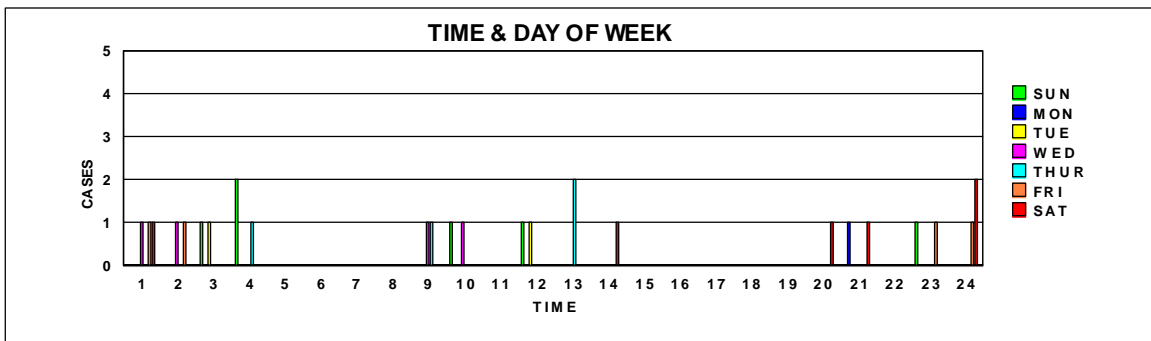
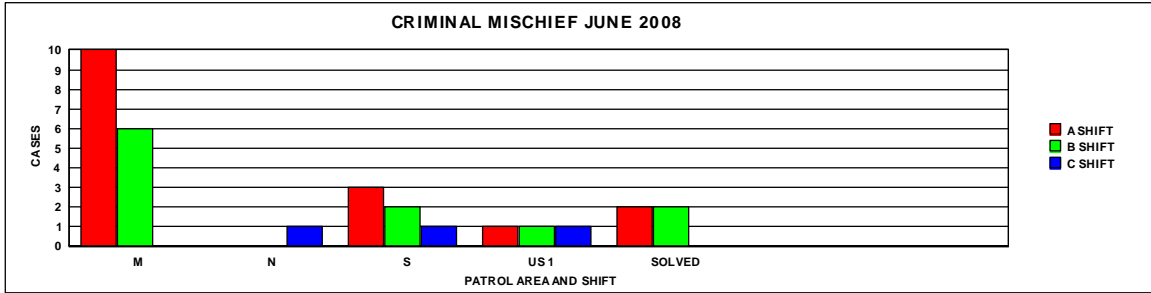
Appendix B

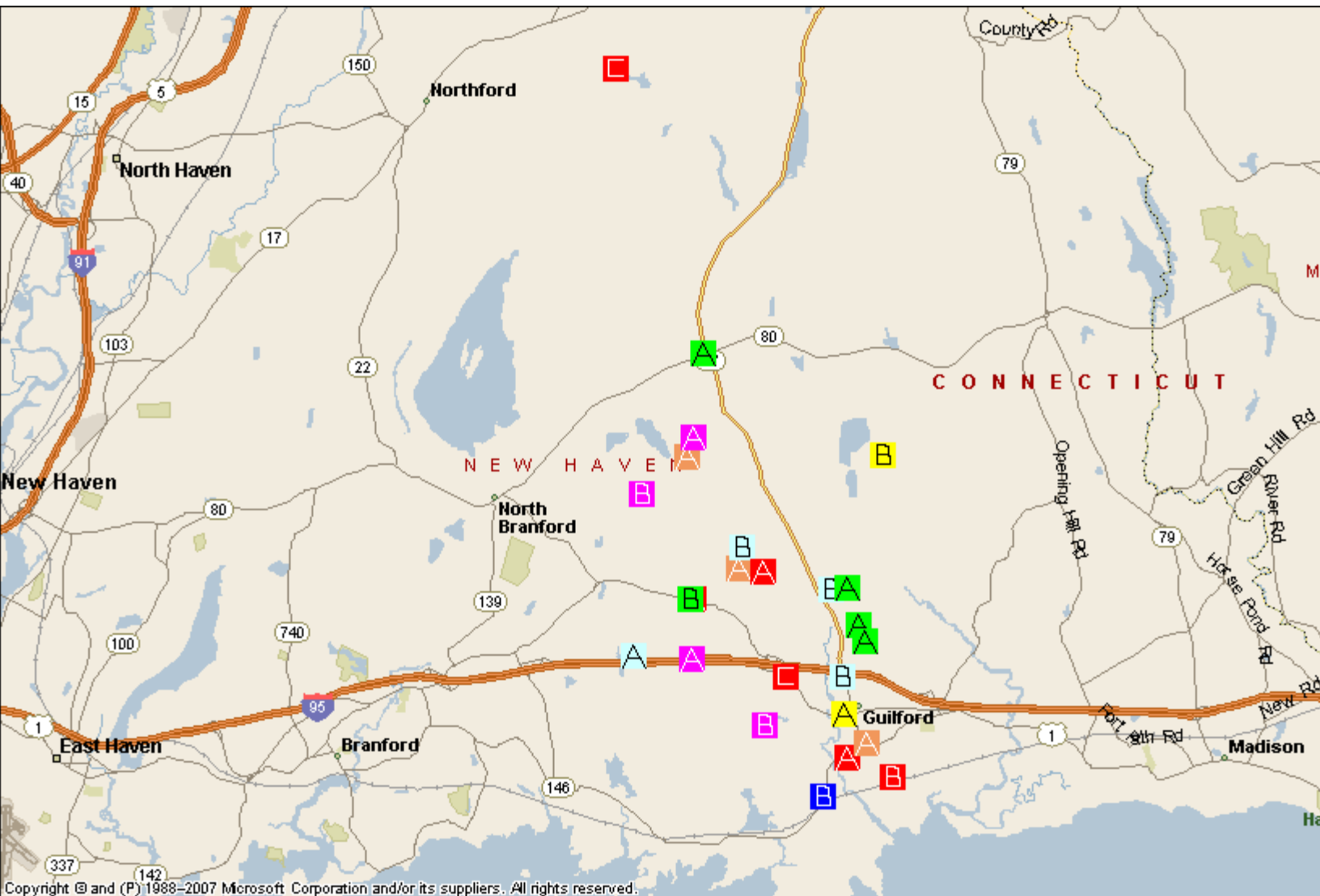




Burglary Cases for June 2008

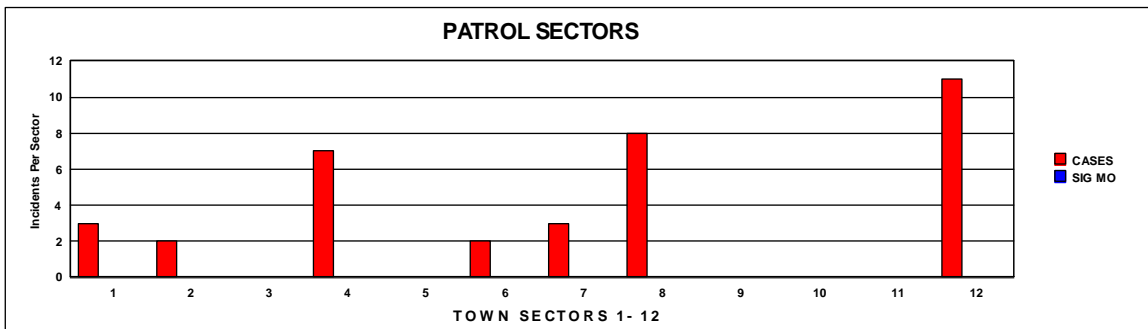
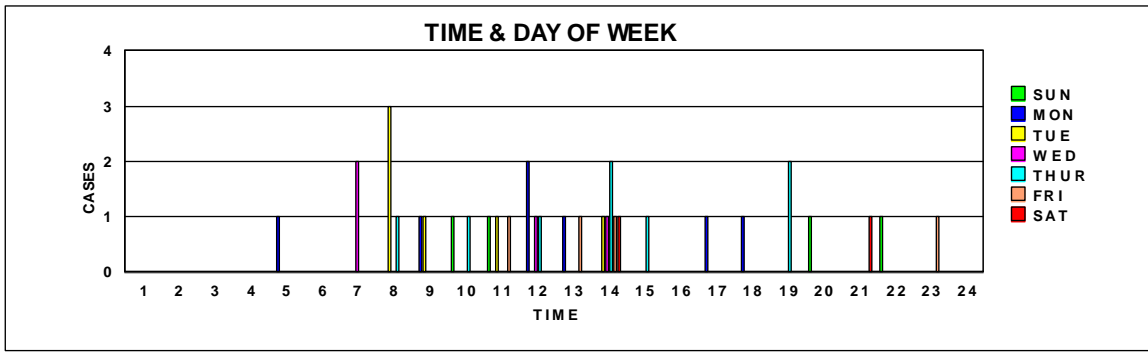
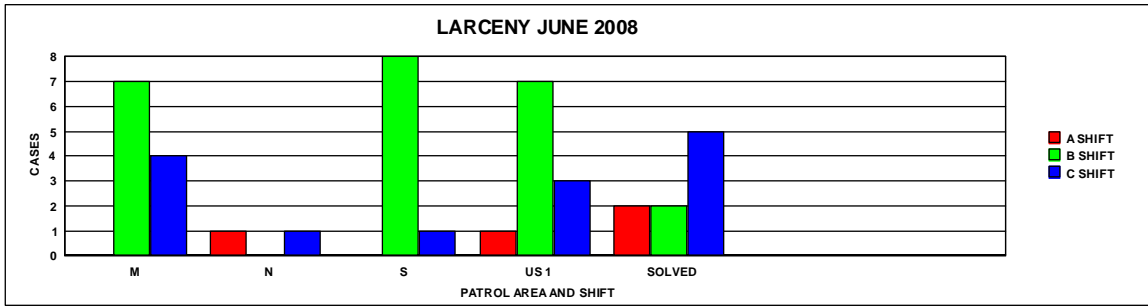
Appendix C

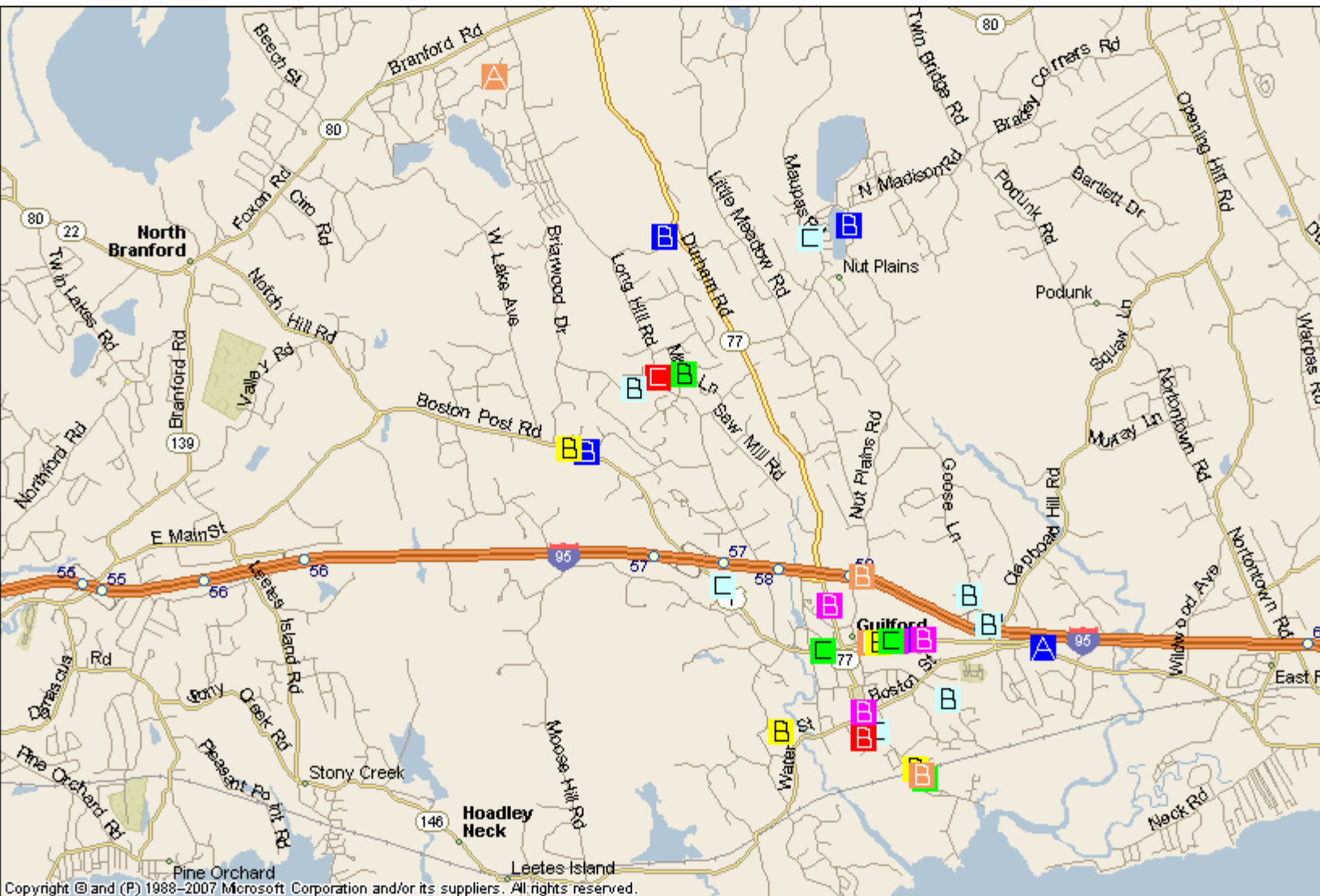




Criminal Mischief Cases for June 2008

Appendix D





Larceny Cases for June 2008