



## **Crime Analysis Report July 2013**

**Prepared by Det. Sgt. Jeffrey Provencher /68**

CALEA 15.3.1

# Table of Contents

Crime Analysis Definition.....	3
Crime Analysis Narrative Report.....	4
Appendix A (Crime Graph).....	5
Appendix B (Burglary Graph) .....	6
Appendix C (Criminal Mischief Graph).....	7
Appendix D (Larceny Graph) .....	8

## Crime Analysis

A set of systematic, analytical processes directed at providing timely and pertinent information relative to crime patterns and trend correlations to assist the operational and administrative personnel in planning the deployment of resources for the prevention and suppression of criminal activities, aiding the investigative process, and increasing apprehensions and the clearance of cases. Within this context, Crime Analysis supports a number of department functions including patrol deployment, special operations, and tactical units, investigations, planning and research, crime prevention, and administrative services (budgeting and program planning). --Steven Gottlieb et al., 1994, "Crime Analysis: From First Report to Final Arrest."

*TO: Office of the Chief*

*FROM: Det. Sgt. Jeffrey Provencher*

*SUBJECT: Crime Analysis Report July 2013*

*During the month of July 2013. The Guilford Police Department had the following **Part 1** and selected **Part 2** Crimes reported: Reference Appendix A for further information. This information was compiled via the AS400 system utilizing a query of all Part 1 Crimes and select Part 2 crimes from the computer database. A full review of each queried case file report was completed.*

The Guilford Police Department investigated **1158** cases for the month of July.

**Murder Cases:**

None reported.

**Sexual Assault:**

None Reported.

**Robbery Cases:**

None reported

**Aggravated Assault**

There were (1) Aggravated Assault complaint reported. It was domestic in nature and an arrest was made.

**Burglary Cases**

There was (1) Burglary complaint reported, it was a commercial burglary, with force used and no arrests were made.

**Larceny Cases:**

There were a total of (26) larceny complaints filed. (3) Cases were reported as shopliftings, (3) thefts from buildings, (8) thefts from a motor vehicle and (12) general larcenies. (1) Arrest was made. Reference Appendix B for a graphic representation.

**Motor Vehicle Thefts:**

There was (1) Motor vehicle theft reported.

**Arson Cases:**

None Reported

**Criminal Mischief Cases:**

There were (25) criminal mischief complaints filed. No arrests were made. Reference Appendix C for a graphic representation.

**Information and Intelligence received on criminal activity:**

CTIC provided LEO intelligence during this month.

Intelligence meetings and legal update briefings were held at the New Haven County Investigative Briefing, as well as the Middlesex County Detective Association and the Shoreline Detectives in regard to on-going criminal activity in all our jurisdictions.

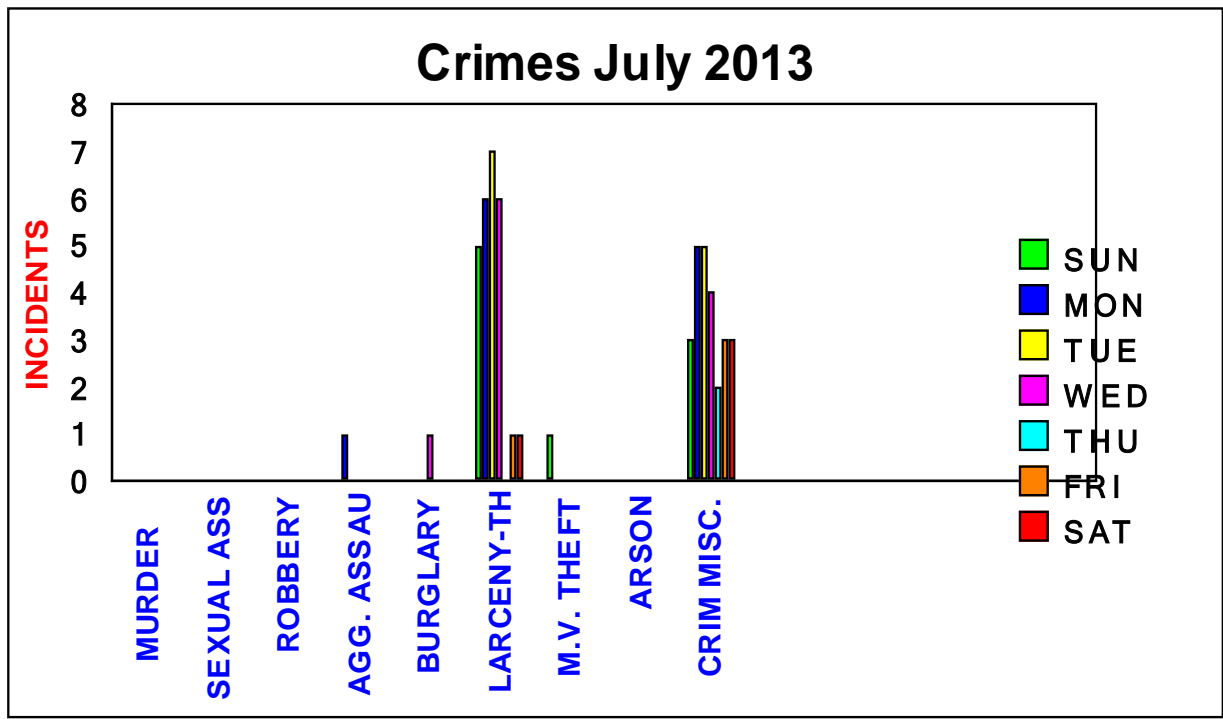
Sincerely,

*Det. Sgt. Jeffrey Provencher /68*

Appendix-A

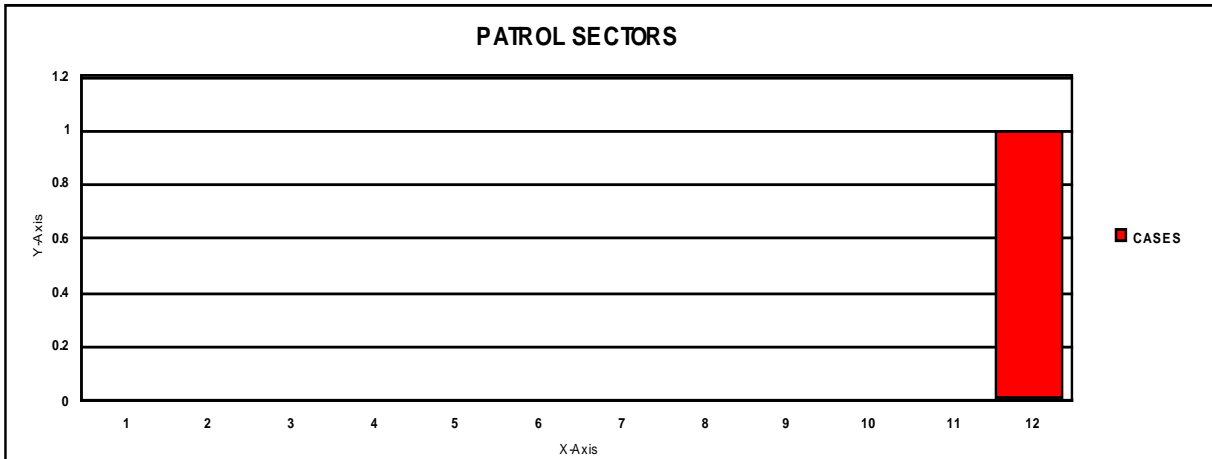
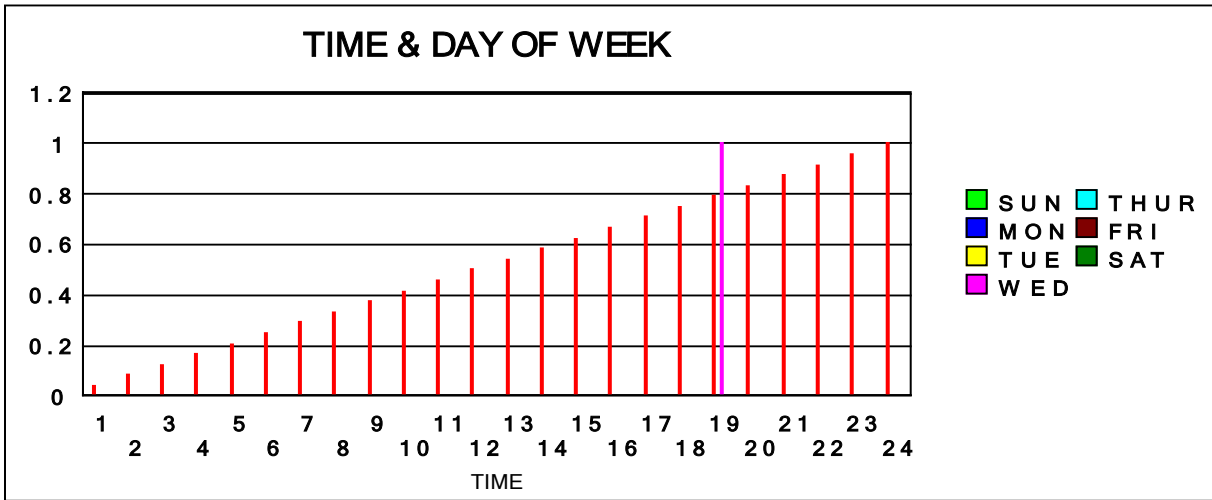
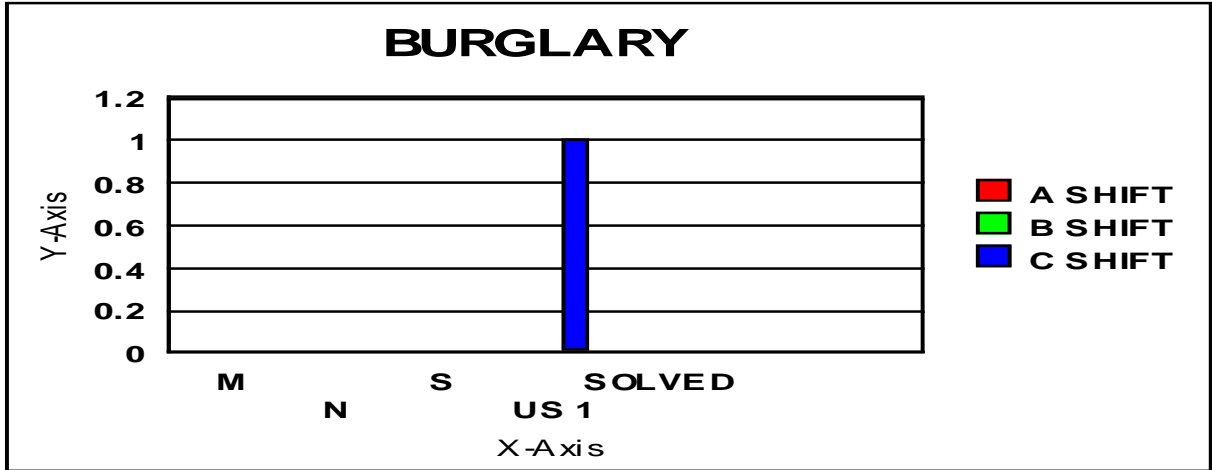
CRIMES JULY 2013

	SUN	MON	TUE	WED	THU	FRI	SAT	TOTAL
<i>MURDER</i>								
<i>RAPE</i>								
<i>ROBBERY</i>								
<i>AGG. ASSAULT</i>			1					1
<i>BURGLARY</i>				1				1
<i>LARCENY-THEFT</i>	5	6	7	6		1	1	26
<i>M.V. THEFT</i>	1							1
<i>ARSON</i>								
<i>CRIM MISC.</i>	3	5	5	4	2	3	3	25



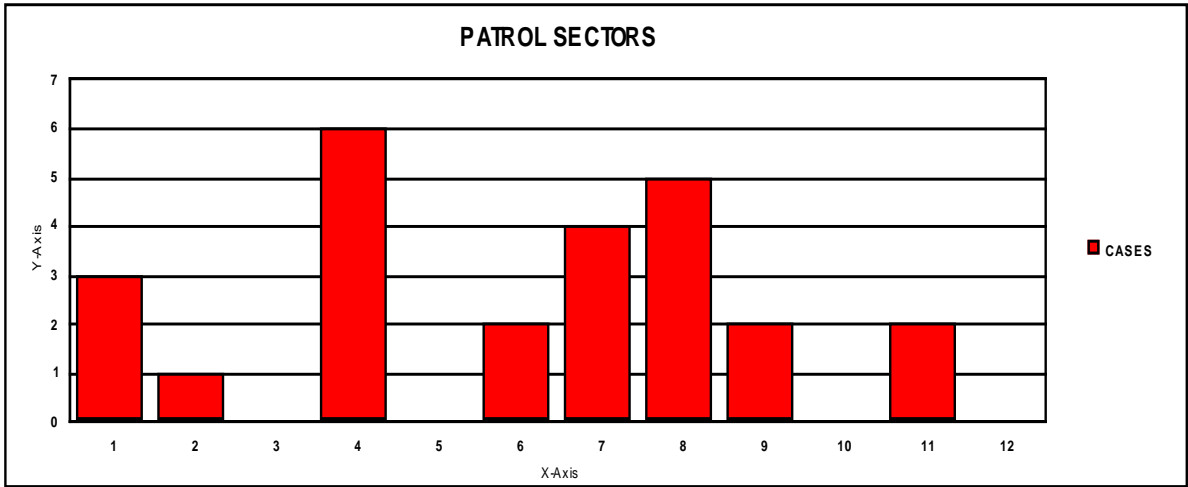
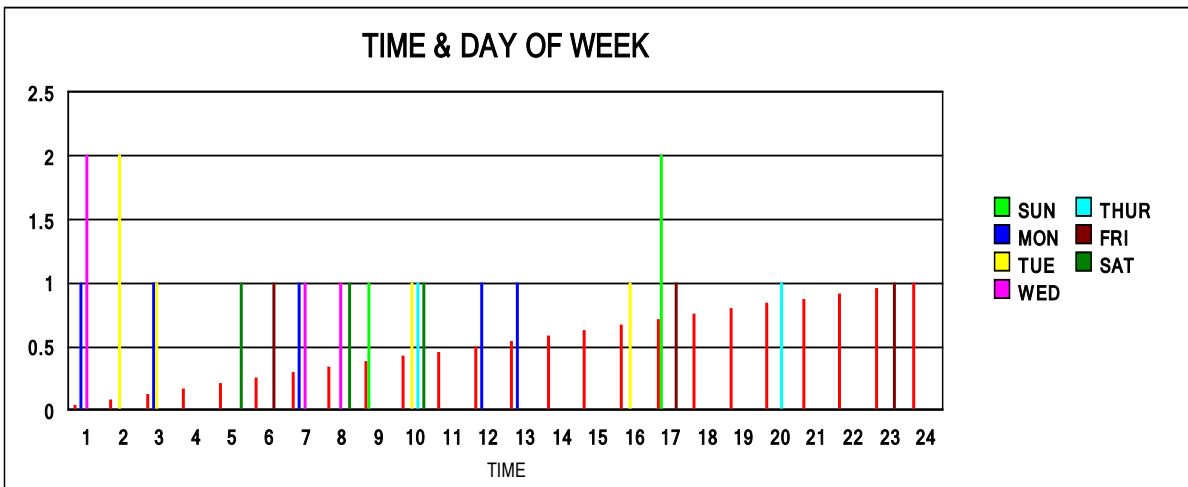
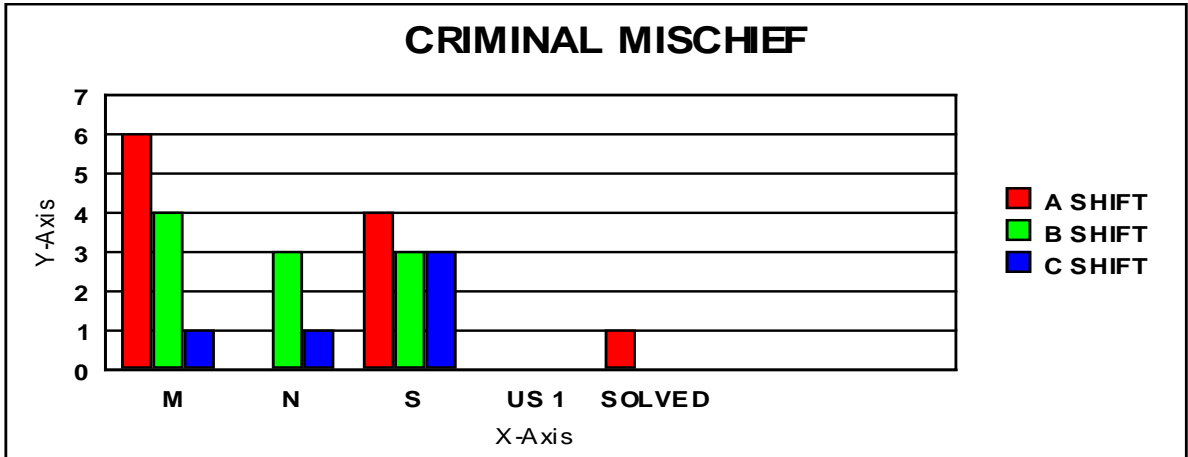
Appendix B

BURGLARY



**Appendix C**

**CRIMINAL MISCHIEF**



**Appendix D**

**LARCENY**

