



## **Crime Analysis Report May 2013**

**Prepared by Det. Sgt. Jeffrey Provencher /68**

CALEA 15.3.1

# Table of Contents

Crime Analysis Definition.....	3
Crime Analysis Narrative Report.....	4
Appendix A (Crime Graph).....	6
Appendix B (Burglary Graph).....	7
Appendix C (Criminal Mischief Graph).....	8
Appendix D (Larceny Graph) .....	9

## Crime Analysis

A set of systematic, analytical processes directed at providing timely and pertinent information relative to crime patterns and trend correlations to assist the operational and administrative personnel in planning the deployment of resources for the prevention and suppression of criminal activities, aiding the investigative process, and increasing apprehensions and the clearance of cases. Within this context, Crime Analysis supports a number of department functions including patrol deployment, special operations, and tactical units, investigations, planning and research, crime prevention, and administrative services (budgeting and program planning). --Steven Gottlieb et al., 1994, "Crime Analysis: From First Report to Final Arrest."

*TO: Office of the Chief*

*FROM: Det. Sgt. Jeffrey Provencher*

*SUBJECT: Crime Analysis Report May 2013*

*During the month of May 2013. The Guilford Police Department had the following **Part 1** and selected **Part 2** Crimes reported: Reference Appendix A for further information. This information was compiled via the AS400 system utilizing a query of all Part 1 Crimes and select Part 2 crimes from the computer database. A full review of each queried case file report was completed.*

The Guilford Police Department investigated 1037 cases for the month of May.

**Murder Cases:**

None reported.

**Sexual Assault:**

None Reported.

**Robbery Cases:**

None Reported.

**Aggravated Assault**

None Reported.

**Burglary Cases**

There were (4) burglary cases filed. (3) Residential burglaries, (1) commercial burglary, with (1) involving force. Arrests have been made on (1) case, and warrants pending for (1) case. Reference Appendix B for a graphic representation.

**Larceny Cases:**

There were a total of (20) larceny complaints filed. (4) Were thefts from buildings, (16) general larcenies. There were arrests made in (2) of the cases, and (5) other cases were solved with no arrest. Reference Appendix C for a graphic representation.

**Motor Vehicle Thefts:**

None Reported.

**Arson Cases:**

None Reported

**Criminal Mischief Cases:**

There were a total of (22) criminal mischief complaints filed, (3) were damage caused to a motor vehicle (11) were mailbox damage, and (8) miscellaneous damage. No arrests were made. Reference Appendix D for a graphic representation.

**Information and Intelligence received on criminal activity:**

CTIC provided LEO intelligence during this month.

Intelligence meetings and legal update briefings were held at the New Haven County Investigative Briefing, as well as the Middlesex County Detective Association and the Shoreline Detectives in regard to on-going criminal activity in all our jurisdictions.

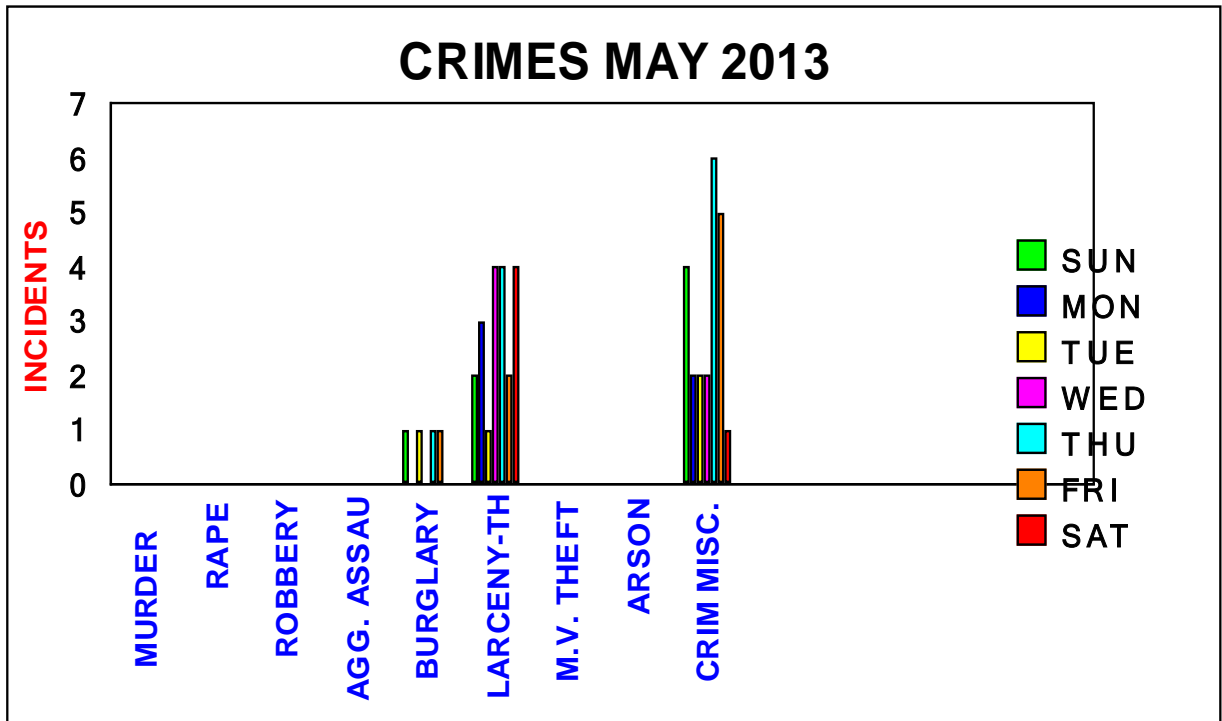
Sincerely,

*Det. Sgt. Jeffrey Provencher /68*

Appendix-A

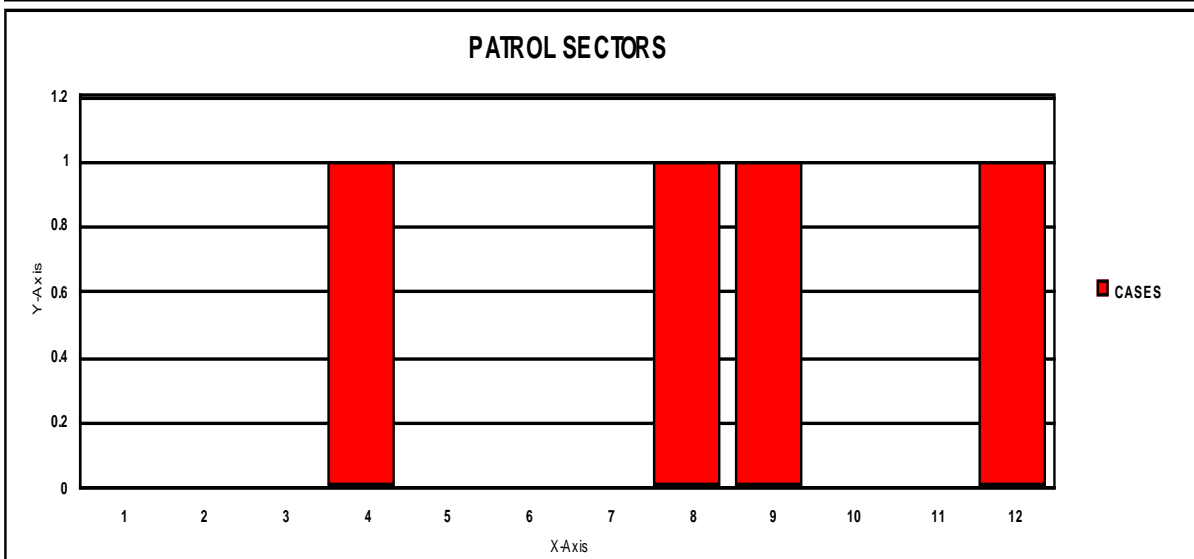
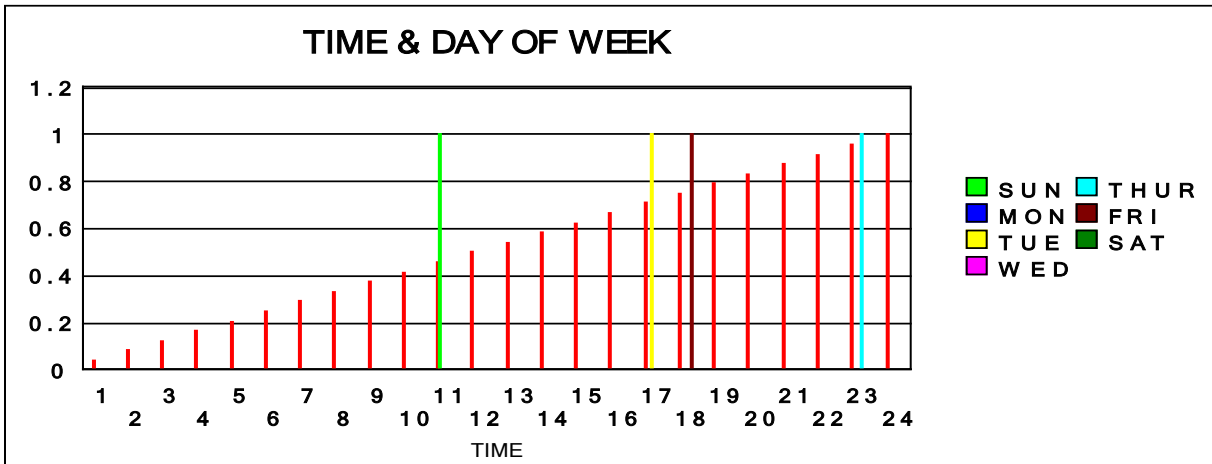
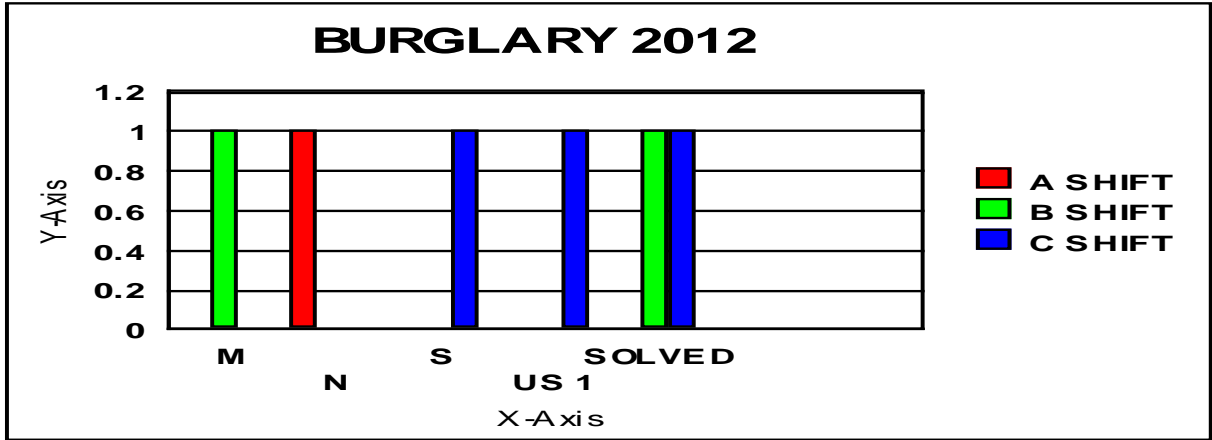
CRIMES MAY  
2013

	SUN	MON	TUE	WED	THU	FRI	SAT	TOTAL
<i>MURDER</i>								
<i>RAPE</i>								
<i>ROBBERY</i>								
<i>AGG. ASSAULT</i>								
<i>BURGLARY</i>	1		1		1	1		4
<i>LARCENY-THEFT</i>	2	3	1	4	4	2	4	20
<i>M.V. THEFT</i>								
<i>ARSON</i>								
<i>CRIM MISC.</i>	4	2	2	2	6	5	1	22



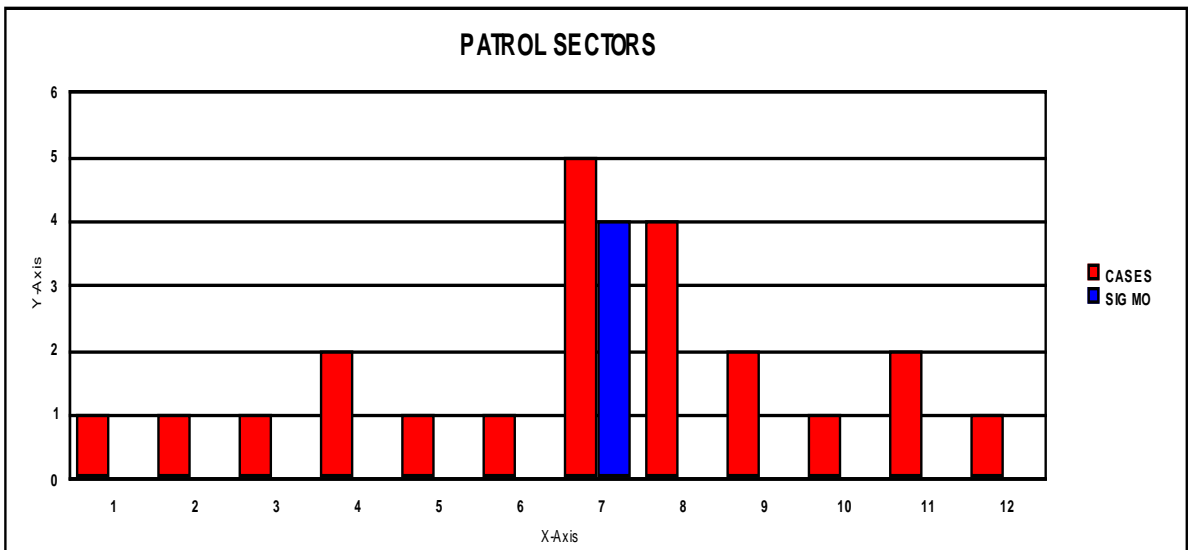
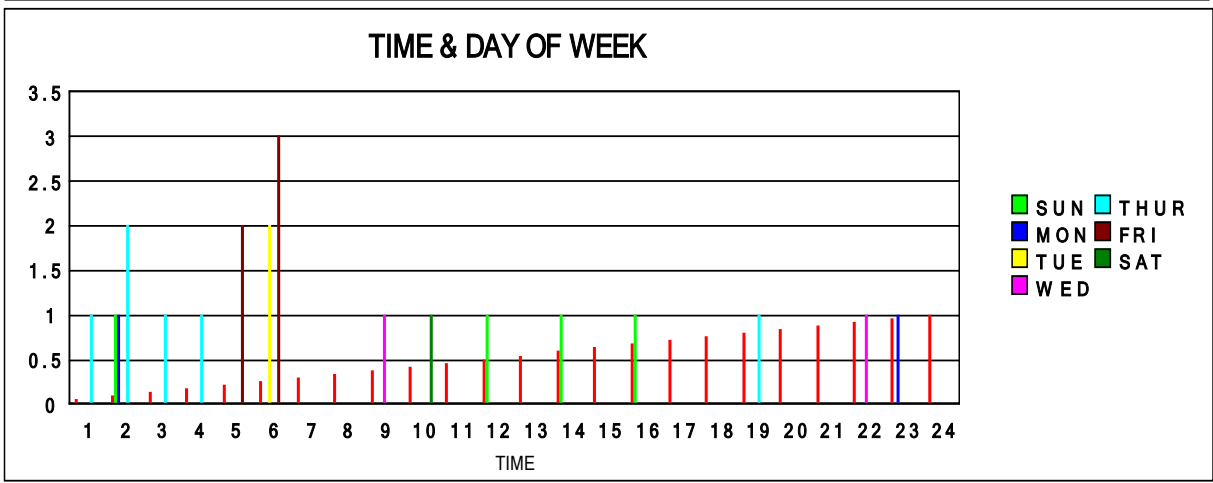
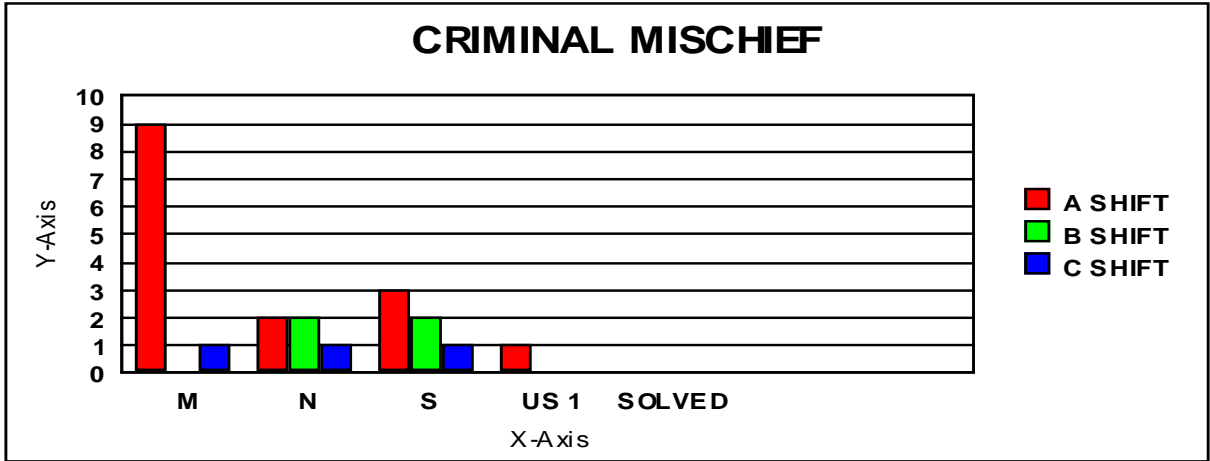
**Appendix B**

**BURGLARY**



**Appendix C**

**CRIMINAL MISCHIEF**



**Appendix D**

**LARCENY**

