



Crime Analysis Report November 2016

Det. Sgt. Brooks #62

CALEA 15.3.1

Table of Contents

Crime Analysis Definition.....	3
Crime Analysis Narrative Report.....	4
Appendix A (Crime Graph).....	6
Appendix B (Burglary Graph) (No Graph this Month. There were (0) burglaries in November)	
Appendix C (Criminal Mischief Graph).....	7
Appendix D (Larceny Graph)	8

Crime Analysis

A set of systematic, analytical processes directed at providing timely and pertinent information relative to crime patterns and trend correlations to assist the operational and administrative personnel in planning the deployment of resources for the prevention and suppression of criminal activities, aiding the investigative process, and increasing apprehensions and the clearance of cases. Within this context, Crime Analysis supports a number of department functions including patrol deployment, special operations, and tactical units, investigations, planning and research, crime prevention, and administrative services (budgeting and program planning). --Steven Gottlieb et al., 1994, "Crime Analysis: From First Report to Final Arrest."

TO: Office of the Chief

FROM: Det. Sgt. Sandra Brooks #62

SUBJECT: Crime Analysis Report November 2016

*During the month of November 2016 the Guilford Police Department had the following **Part 1** and selected **Part 2** Crimes reported: Reference Appendix A for further information. This information was compiled via the AS400 system and RMS System utilizing a query of all Part 1 Crimes and select Part 2 crimes from the computer databases. A full review of each queried case file report was completed.*

The Guilford Police Department investigated **960** cases for the month of November.

Burglary Cases

There were a total of (0) burglary cases reported. Appendix B is therefore not included in this report this month.

Criminal Mischief Cases:

There were a total of (12) criminal mischief cases filed; (9) of the cases were on private property and (3) were on public property. Reference Appendix C for a graphic representation.

Larceny Cases:

There were a total of (28) larceny complaints filed. A detailed examination of these cases revealed the following details: Of the (28) cases, (6) were solved. A total breakdown of the types of larceny cases are as follows: (12) general larceny cases, (2) shoplifting, (4) thefts from a vehicle, and (1) theft of a vehicle/recovered, (1) theft of MV license plate, (1) theft of services and (7) thefts from residences. Reference Appendix D for a graphic representation.

Robbery Cases:

There was one (1) robbery case filed. This was at a liquor store. The case is solved and the complainant did not wish to pursue charges, therefore, no arrest has been made.

Arson Cases:

None Reported

Rape/Sex offense Cases:

One (1) incident was reported; in accordance with Connecticut General Statutes details of all sexual assault cases details remain sealed.

Murder Cases:

None reported

Information and Intelligence received on criminal activity:

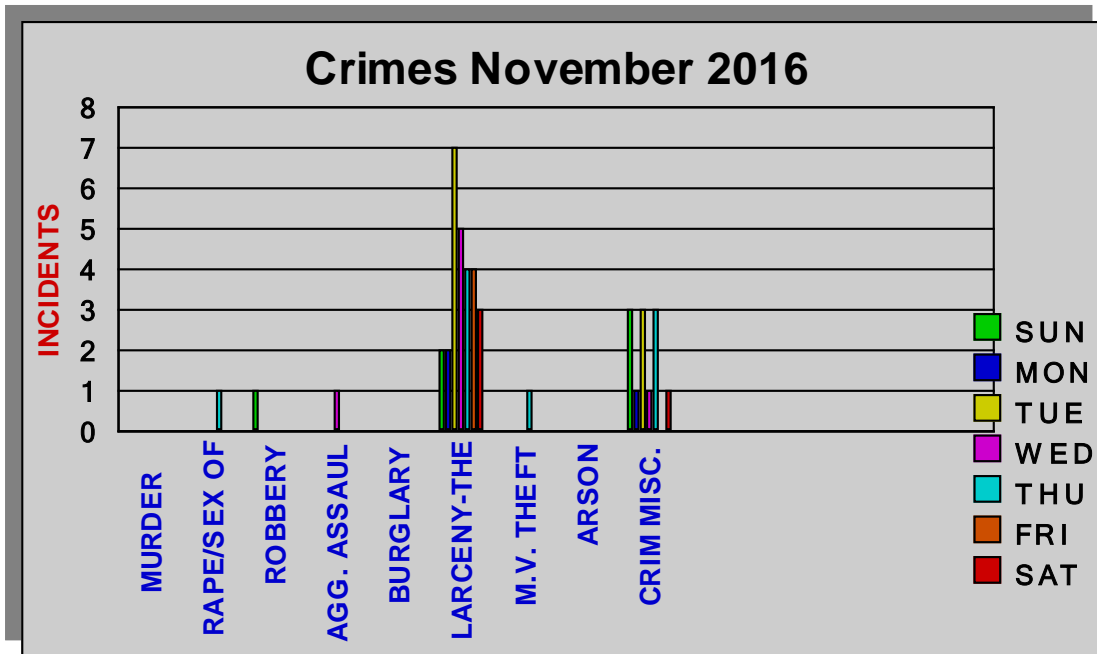
CTIC provided LEO intelligence during this month.

Intelligence meetings were held with the Middlesex County Detective Association, New Haven ISU, MDT and the Shoreline Detectives in regard to on-going criminal activity in all our jurisdictions.

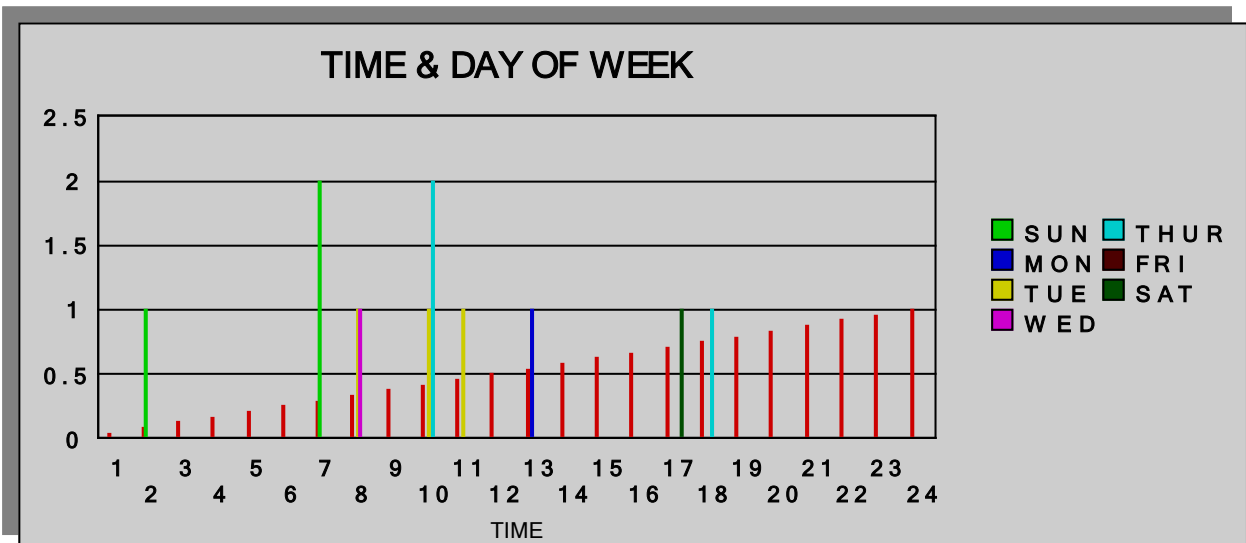
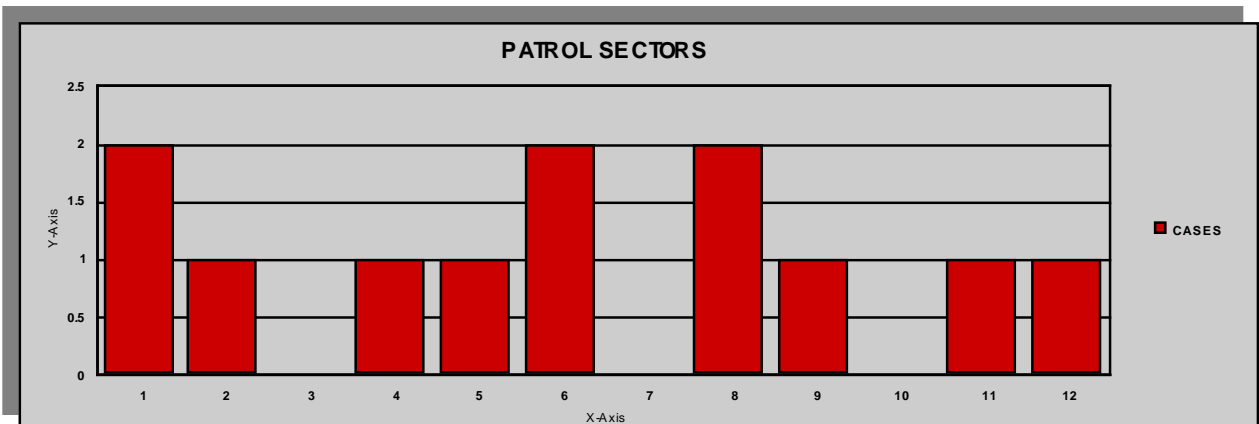
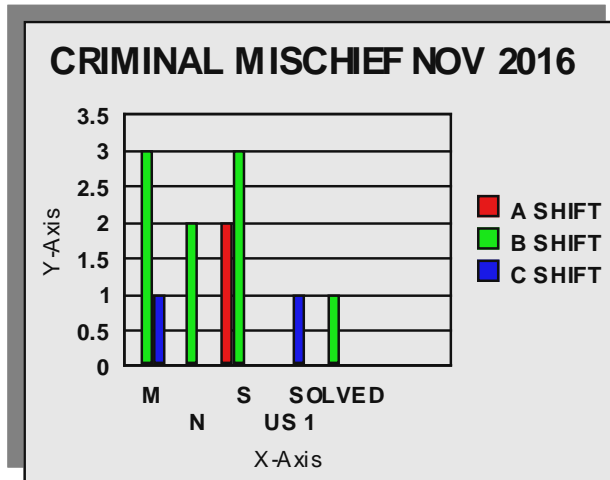
Respectfully submitted,

Det. Sgt. Brooks #62

APPENDIX A-Crime



Appendix C-Criminal Mischief



Appendix D-Larceny

