



Crime Analysis Report January 2017

Det. Sgt. Brooks #62

CALEA 15.3.1

Table of Contents

Crime Analysis Definition.....	3
Crime Analysis Narrative Report.....	4
Appendix A (Crime Graph).....	6
Appendix B (Burglary Graph).....	7
Appendix C (Criminal Mischief Graph).....	8
Appendix D (Larceny Graph)	9

Crime Analysis

A set of systematic, analytical processes directed at providing timely and pertinent information relative to crime patterns and trend correlations to assist the operational and administrative personnel in planning the deployment of resources for the prevention and suppression of criminal activities, aiding the investigative process, and increasing apprehensions and the clearance of cases. Within this context, Crime Analysis supports a number of department functions including patrol deployment, special operations, and tactical units, investigations, planning and research, crime prevention, and administrative services (budgeting and program planning). --Steven Gottlieb et al., 1994, "Crime Analysis: From First Report to Final Arrest."

TO: Office of the Chief

FROM: Det. Sgt. Sandra Brooks #62

SUBJECT: Crime Analysis Report January 2017

*During the month of January 2017 the Guilford Police Department had the following **Part 1** and selected **Part 2** Crimes reported: Reference Appendix A for further information. This information was compiled via the AS400 system and RMS System utilizing a query of all Part 1 Crimes and select Part 2 crimes from the computer databases. A full review of each queried case file report was completed.*

The Guilford Police Department investigated **858** cases for the month of January.

Burglary Cases

There was a total of (1) burglary case reported. It was a non-forced residential. It is not solved at this time but a suspect has been developed. Reference Appendix B for a graphic representation.

Criminal Mischief Cases:

There were a total of (18) criminal mischief cases filed; (15) of the cases were on private property and (3) were on public property. (4) cases have been solved. Reference Appendix C for a graphic representation.

Larceny Cases:

There were a total of (28) larceny complaints filed. A detailed examination of these cases revealed the following details: Of the (28) cases, (14) were solved. A total breakdown of the types of larceny cases are as follows: (9) general larceny cases, (8) shoplifting, (10) thefts from a vehicle, and (1) theft from a building. Reference Appendix D for a graphic representation.

Robbery Cases:

There were (0) robbery cases filed.

Arson Cases:

None Reported

Rape/Sex offense Cases:

Three (3) incidents were reported; in accordance with Connecticut General Statutes details of all sexual assault cases details remain sealed.

Murder Cases:

None reported

Information and Intelligence received on criminal activity:

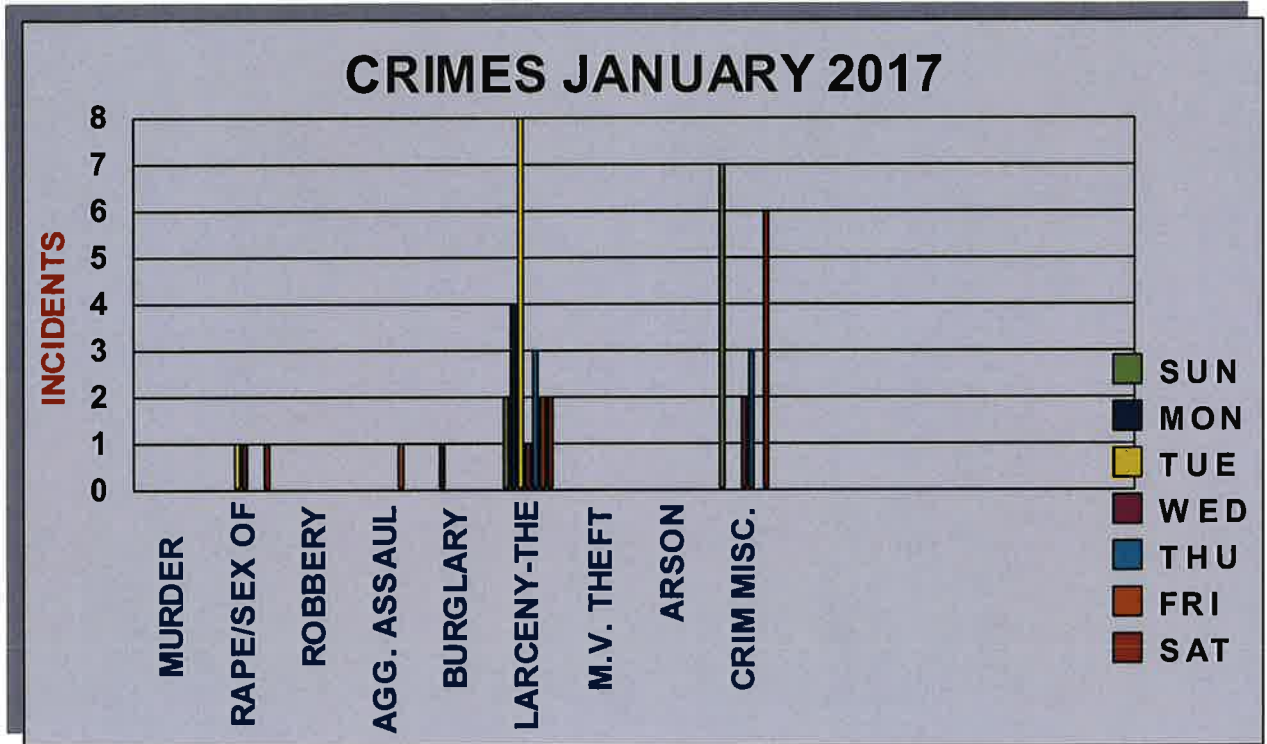
CTIC provided LEO intelligence during this month.

Intelligence meetings were held with the Middlesex County Detective Association, New Haven ISU, MDT and the Shoreline Detectives in regard to on-going criminal activity in all our jurisdictions.

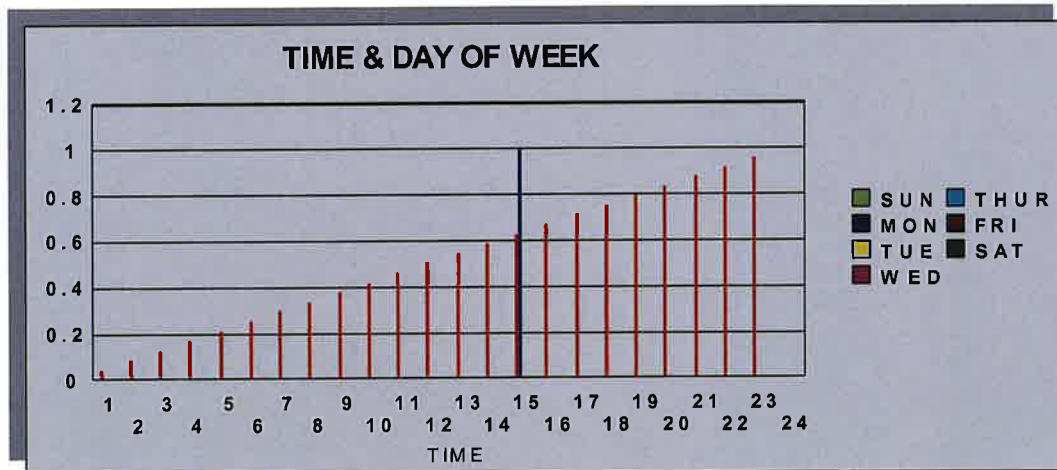
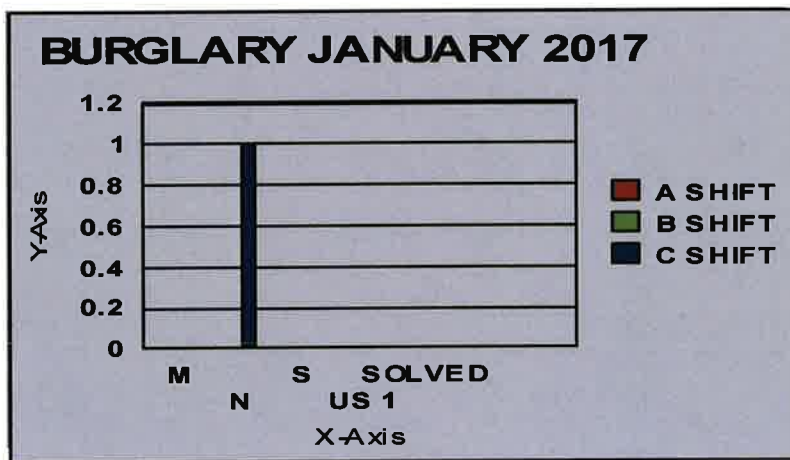
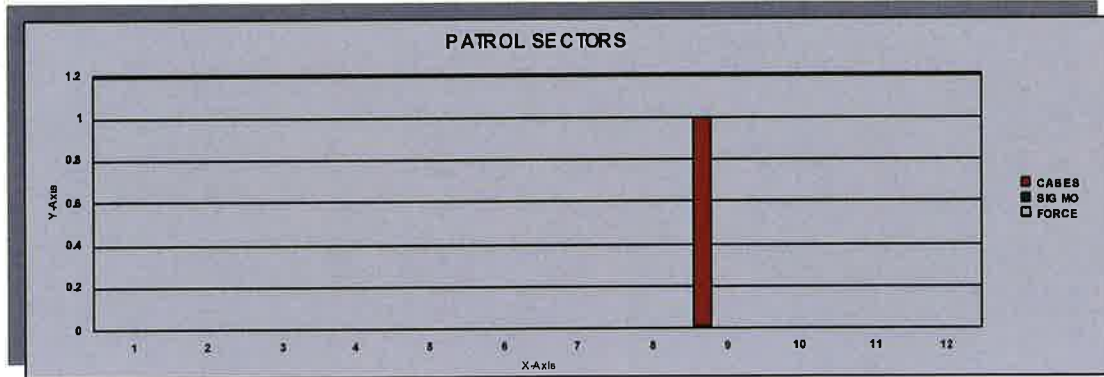
Respectfully submitted,

Det. Sgt. Brooks #62

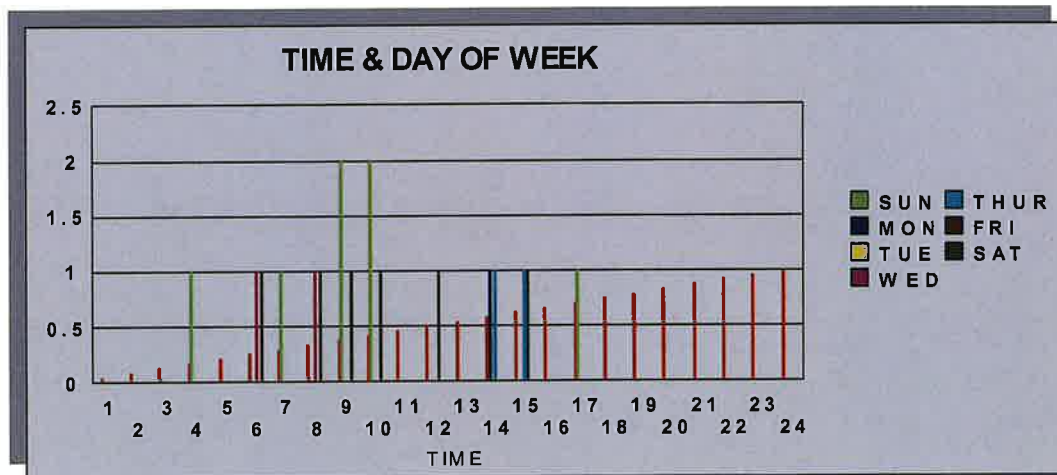
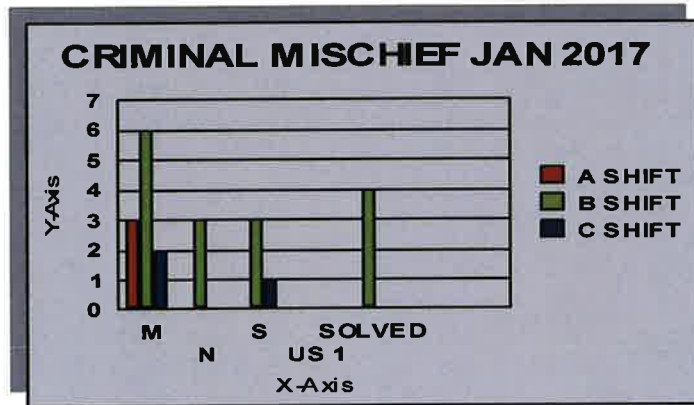
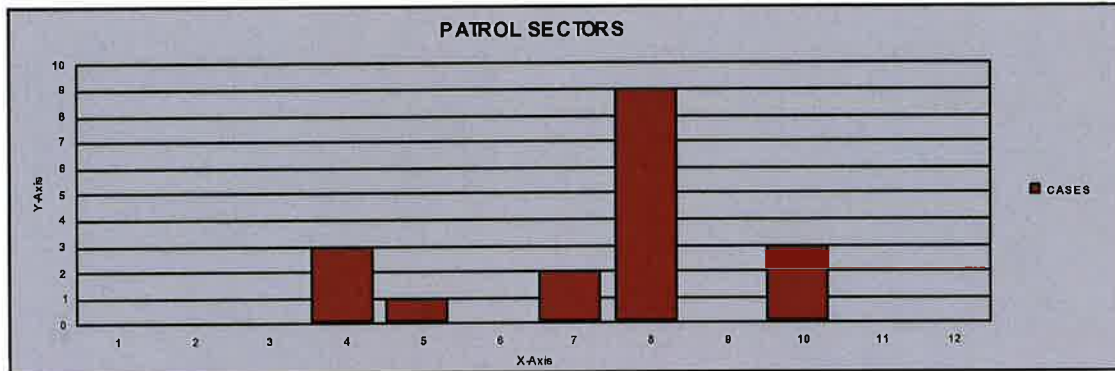
APPENDIX A-Crime



Appendix B-Burglary



Appendix C-Criminal Mischief



Appendix D-Larceny

