



Crime Analysis Report September 2018

Det. Sgt. Kurt Fasulo #63

CALEA 15.3.1

Table of Contents

Crime Analysis Definition.....	3
Crime Analysis Narrative Report.....	4
Appendix A (Crime Graph).....	8
Appendix B (Burglary Graphs).....	9
Appendix B (Criminal Mischief Graphs).....	12
Appendix C (Larceny Graphs)	15

Crime Analysis

A set of systematic, analytical processes directed at providing timely and pertinent information relative to crime patterns and trend correlations to assist the operational and administrative personnel in planning the deployment of resources for the prevention and suppression of criminal activities, aiding the investigative process, and increasing apprehensions and the clearance of cases. Within this context, Crime Analysis supports a number of department functions including patrol deployment, special operations, and tactical units, investigations, planning and research, crime prevention, and administrative services (budgeting and program planning). --Steven Gottlieb et al., 1994, "Crime Analysis: From First Report to Final Arrest."

TO: Office of the Chief of Police

FROM: Det. Sgt. Kurt Fasulo #63

SUBJECT: Crime Analysis Report September 2018

*During the month of September 2018, the Guilford Police Department had the following **Part 1** and selected **Part 2** Crimes reported: Reference Appendix A for further information. This information was compiled via the NEXGEN system utilizing a query of all Part 1 Crimes and select Part 2 crimes from the computer database. A full review of each queried case file report was completed.*

The Guilford Police Department investigated 994 cases for the month of September. This is a four percent (4%) decrease in calls from the previous month.

Burglary Cases

There was one (1) reported Burglary for the month of September. This is the same number reported as August. The incident was a distraction burglary in which an elderly couple was targeted.

There were again cases of unlocked vehicles being entered and items stolen from within. These thefts from unlocked vehicle incidents would result in a criminal charge of burglary, however for reporting purposes those cases can be found in the larceny section of this report.

There was no crime pattern developed, thus no response plan was developed.

Reference Appendix B for a graphic representation.

Criminal Mischief Cases:

There was a total of seven (7) criminal mischief cases filed for the month of September. This is a decrease in criminal mischief cases from August in which there were sixteen (16). Four (4) cases involved damage to private property; the remaining three (3) involved damage to public property.

The times and dates reported are depicted in the graphic representation. Some of these are the time the report was filed and not the time at which the crime is being committed. Two (2) of the seven cases show an accurate representation of the time these crimes were committed. The others were reported after the damage was observed and the exact time and date of the occurrence is unknown. There were two (2) cases of traffic signs being

graffitied during the overnight or late evening hours. These two (2) cases appear to be the only cases which are linked for this month.

There were no arrests made for criminal mischief in the month of September.

The criminal mischief cases for this month were dispersed throughout the month and there was no pattern developed. Consistent with most months, the majority of criminal mischief takes place in the late evening, early morning hours on weekends.

Reference Appendix C for a graphic representation.

Larceny Cases:

There were seventeen (17) larceny cases reported during the month of September. Three (3) of the seventeen cases were solved. There were no arrests made as a result of these larceny cases. In one case the complainant no longer wished to pursue charges once payment was received. In two cases the items were returned to the victim and the victim no longer wished to pursue charges. One other case is not yet solved, however significant suspect information has been developed and may lead to arrests.

The larceny types are as follows: ten (10) thefts from a motor vehicle, and seven (7) general larceny.

For twelve (12) of these larceny cases the exact date and time that the larceny occurred has not been determined. Thus, the date and time shown reflects only that of the date/time reported. The larceny from motor vehicle cases typically are reported upon discovery of the entry by the vehicle owner. In some cases, the date/time can be inferred based upon information developed from related cases. The statistics are skewed to the B Shift and C Shift as these are the times when the complaints are made. However, nearly every larceny from motor vehicle case occurs during the overnight hours and can be attributed to the hours of the A Shift. For the month of September, nine of the ten thefts from motor vehicle cases occurred during the overnight hours between 2300 and 0700.

The number of larceny cases decreased from twenty (20) in August to seventeen (17) in September.

The fraud cases for the month of September are as follows: Eleven (11) General Fraud, One (1) Fraud – Identity Theft, Two (2) Fraud with a Credit Card, and Two (2) Fraud over Internet. These other fraud incidents all involved complainants who were reimbursed or did not experience any loss, thus these cases are not included in the monthly totals for larceny cases.

The thefts from motor vehicle larcenies all involved items being removed from unlocked motor vehicles. Nine (9) of the ten theft from motor vehicle cases seem to be similar in Modus Operandi and were likely completed by the same suspect(s).

This department continues to educate the public on securing valuables through social media platforms. This issue continues to be a focal point for shoreline police departments. There have been a number of arrests made for past cases by the Guilford Police Department as well as area agencies. These cases are also intertwined with the larceny of motor vehicle cases as unlocked vehicles with keys left inside are those being stolen.

Reference Appendix C for a graphic representation.

Robbery Cases:

None reported.

Larceny of MV Cases:

There were three (3) larceny of a motor vehicle during the month of September. There were also three motor vehicle larcenies during August. One of the cases involved the theft of a motor vehicle from another town which was recovered in Guilford. One of the vehicles has since been recovered and processed for evidence. One of the vehicles stolen had the keys inside the unlocked vehicle and is connected to a number of larcenies from motor vehicles in the same area on that same evening/overnight. The remaining vehicle has not yet been recovered.

There were a number of evidence items recovered from the stolen motor vehicle which have been processed and were submitted to the CT Division of Scientific Services for further analysis. This department has experienced success in the past with identification of suspects based upon evidence recovered from the stolen motor vehicles.

Aggravated Assault/Simple Assault:

None reported.

Arson Cases:

There is one active investigation for a suspected arson.

Rape/Sex offense Cases:

There were two (2) sexual assault cases reported. Per Connecticut General Statute, the details of these cases will remain confidential.

Homicide Cases:

None reported.

Information and Intelligence received on criminal activity:

CTIC provided LEO intelligence during this month. The New England State Police Information Network also served as a source of intelligence as did the Law Enforcement Information Exchange (LInX). Guilford Police also monitors Crimedex Law Enforcement Portal for updated information on financial crime trends. Crime intelligence sharing is also monitored through New Haven Police Department's SLACK program.

Intelligence meetings were held with the Middlesex County Detective Association and New Haven MDT in regard to ongoing criminal activity in all attending agencies' jurisdictions.

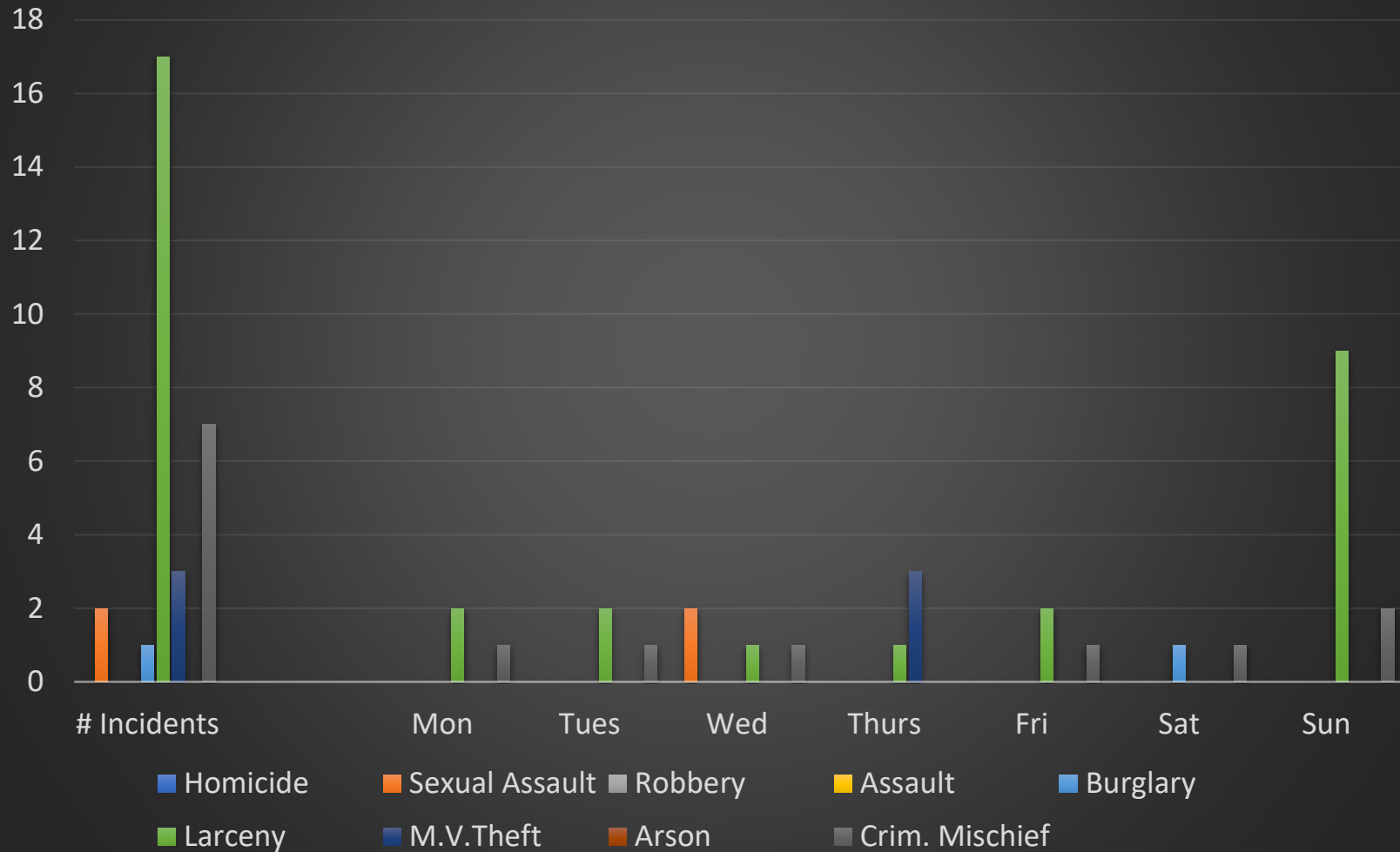
Guilford Police Department continues to correspond with the Branford Police Department and surrounding agencies regarding stolen motor vehicles and burglaries taking place in each agency's respective jurisdiction. The goal of the collaboration is to gather enough information to identify trends which will assist in developing response plans as well as suspect information.

Respectfully submitted,

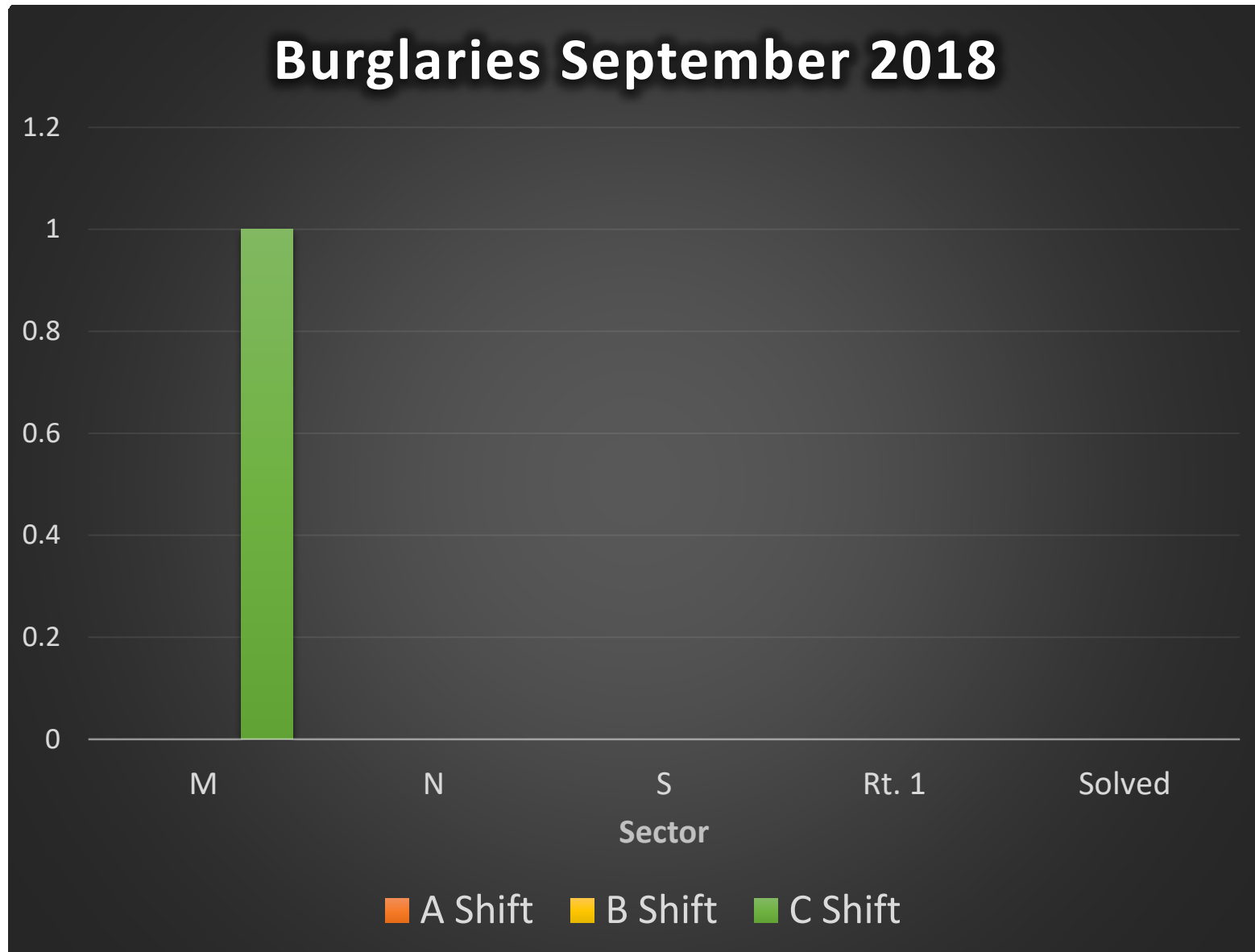
Det. Sgt. Kurt Fasulo

Appendix A - Crime

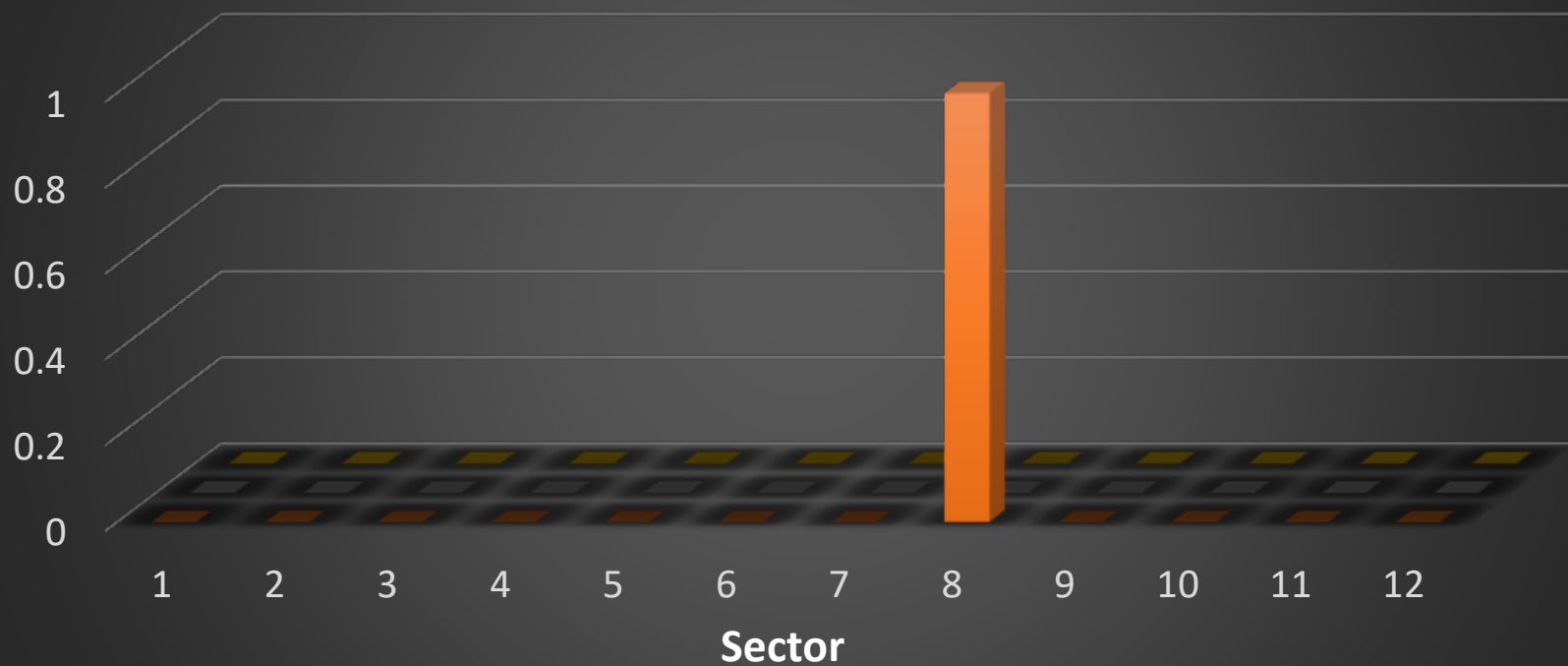
Crimes by Type/Day September 2018



Appendix B – Burglary

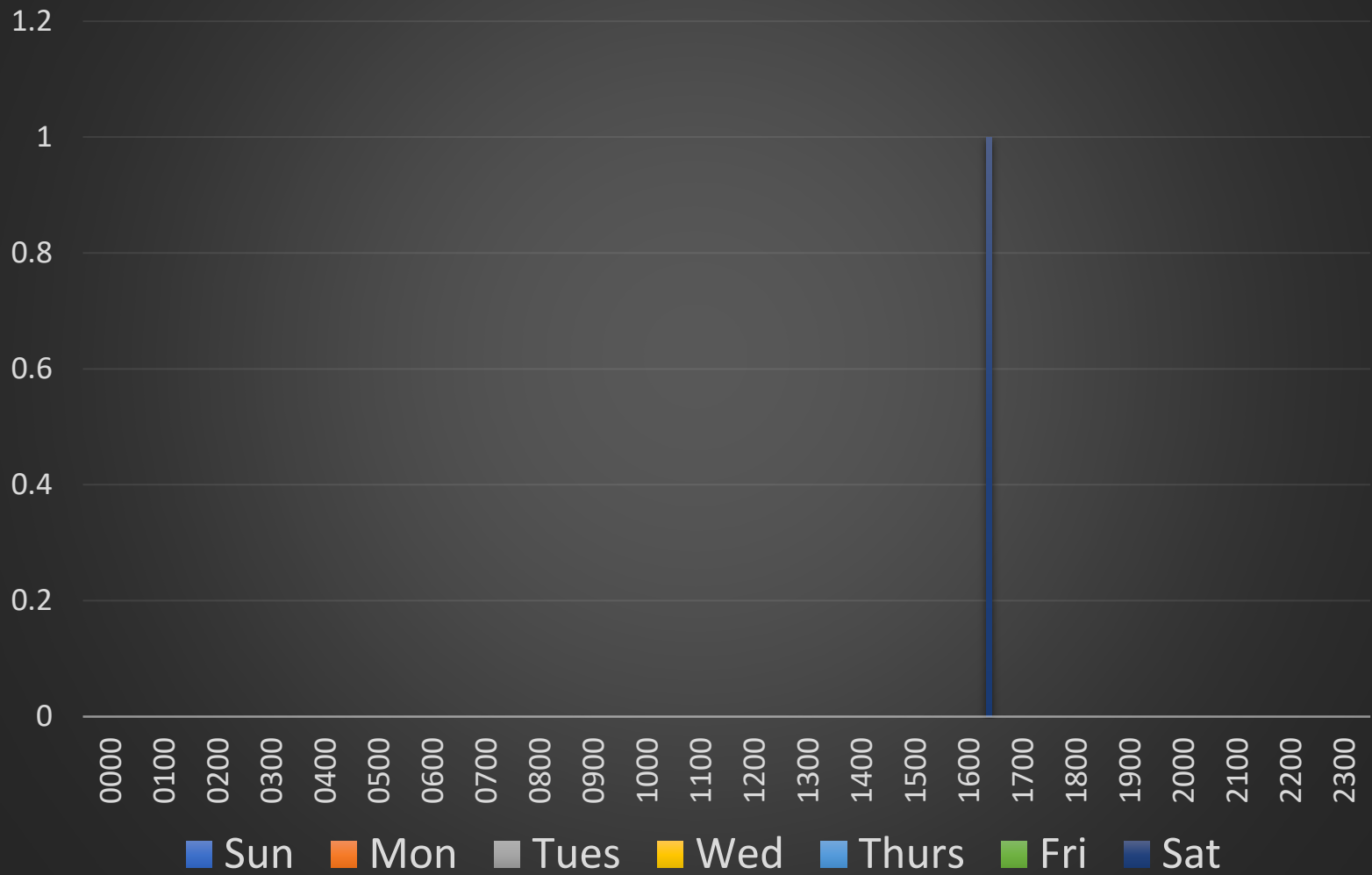


Burglary Sector Breakdown September 2018

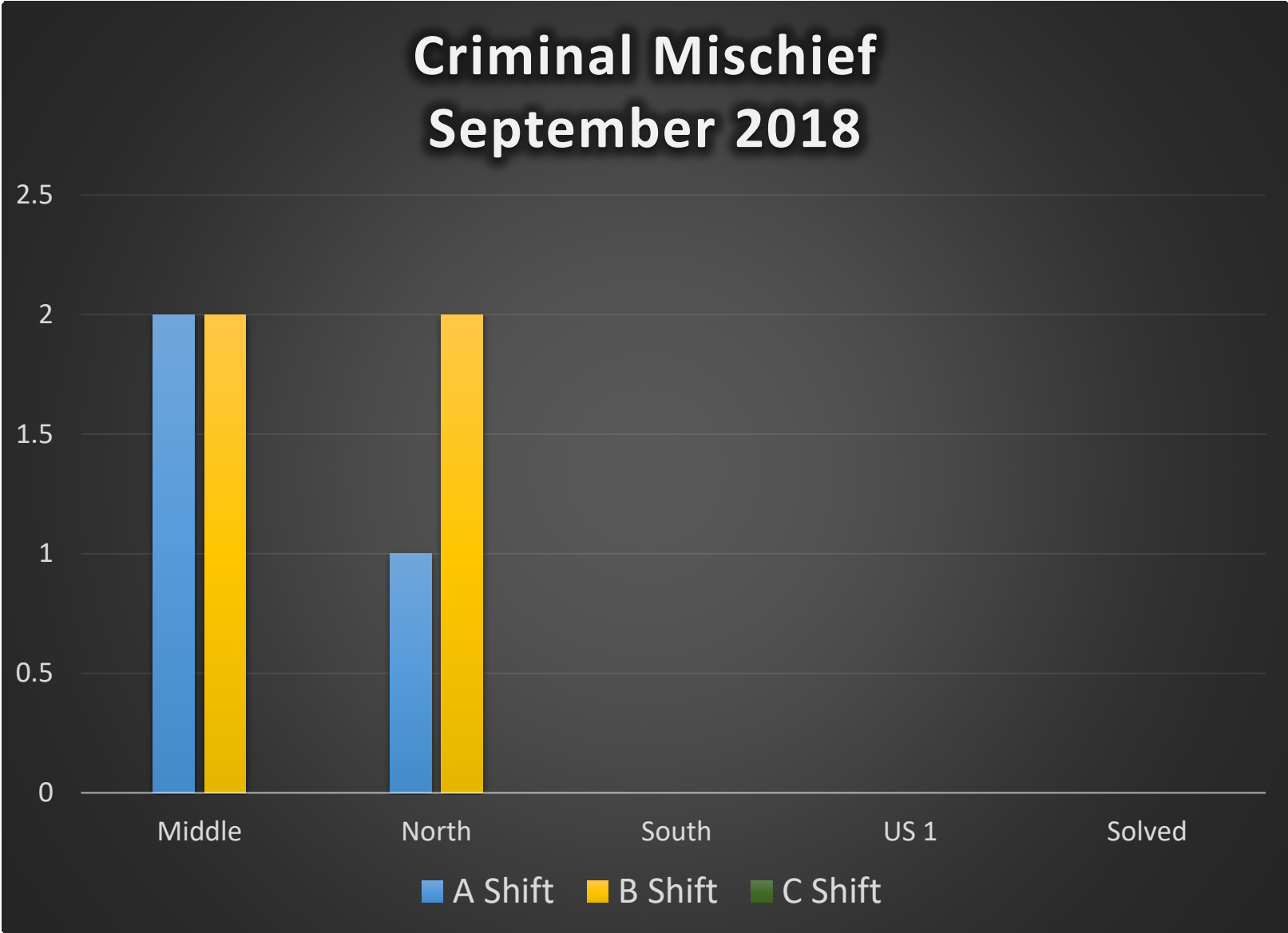


■ # Burglaries ■ Sig MO ■ Force

Burglary Date/Time Breakdown September 2018

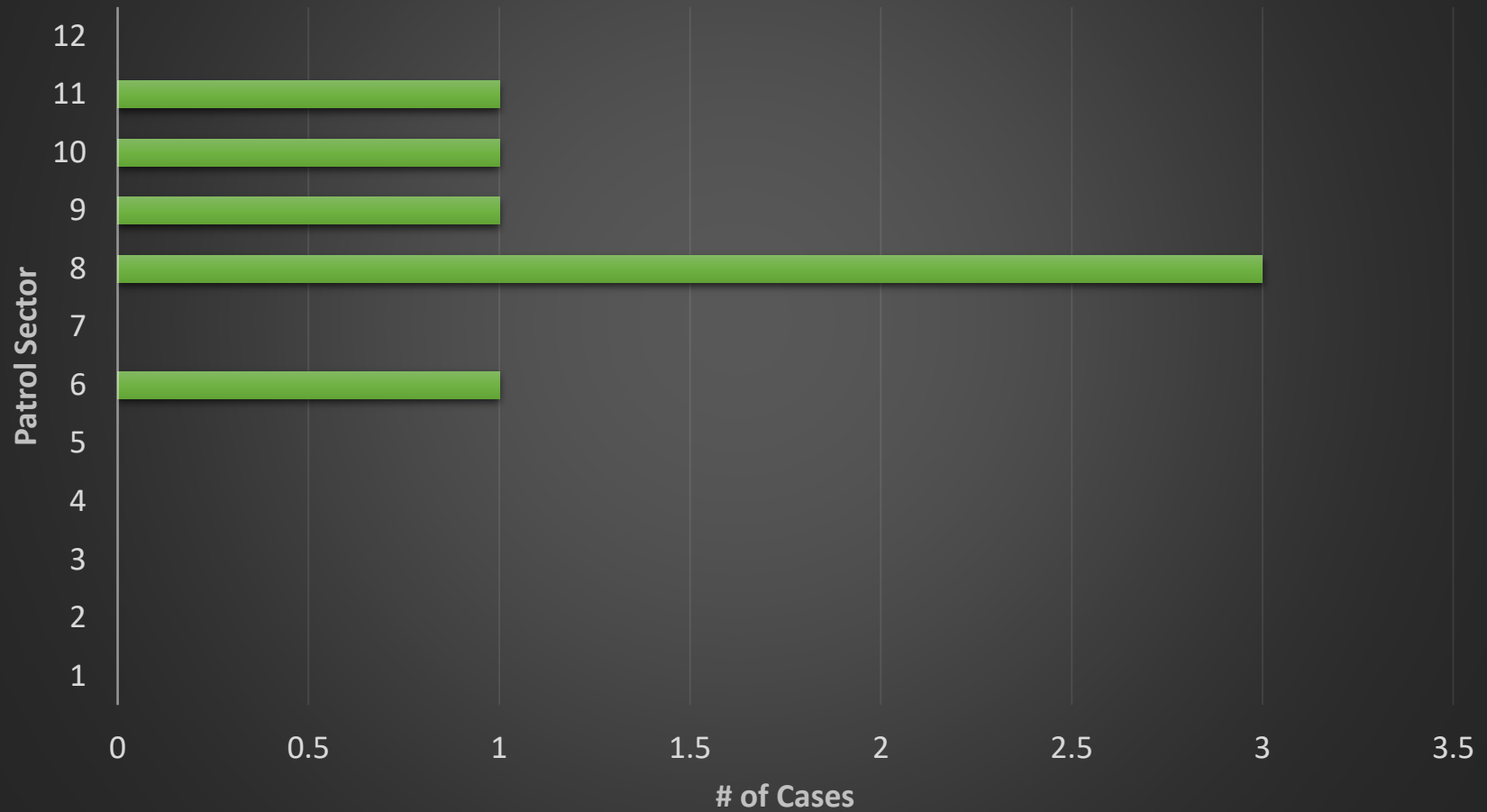


Appendix C - Criminal Mischief

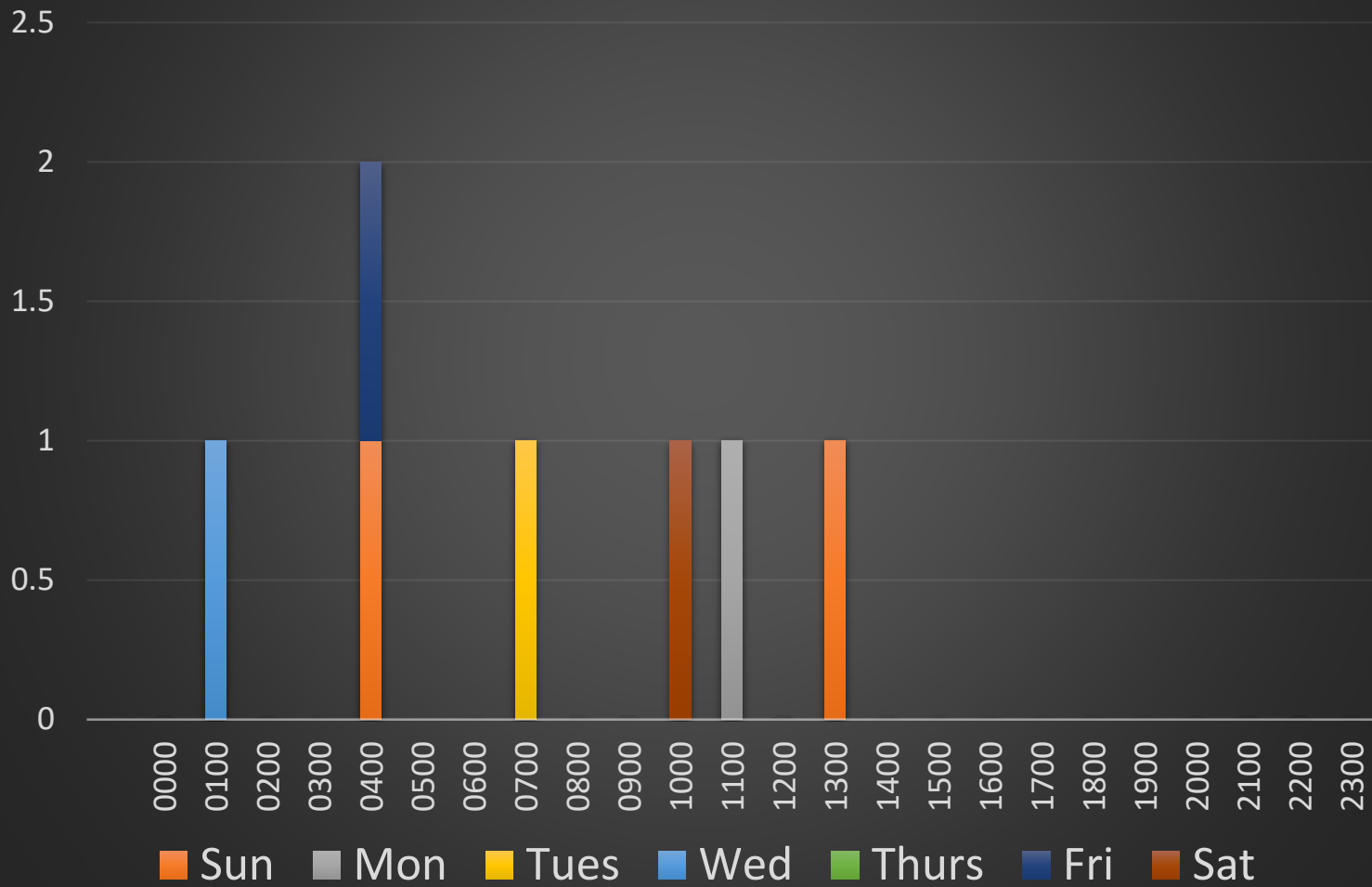


Cases by Sector

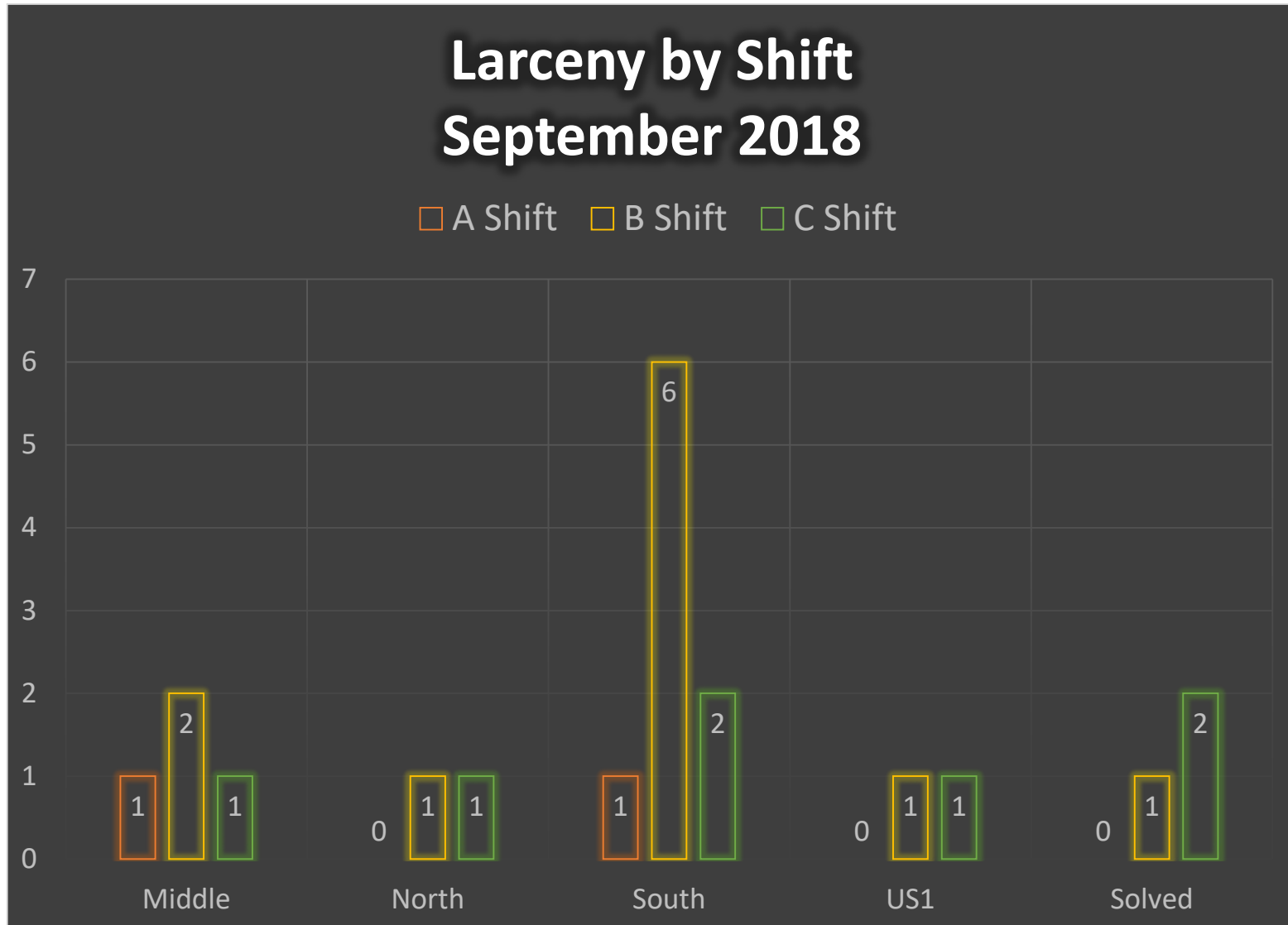
Crim. Mischief - September 2018



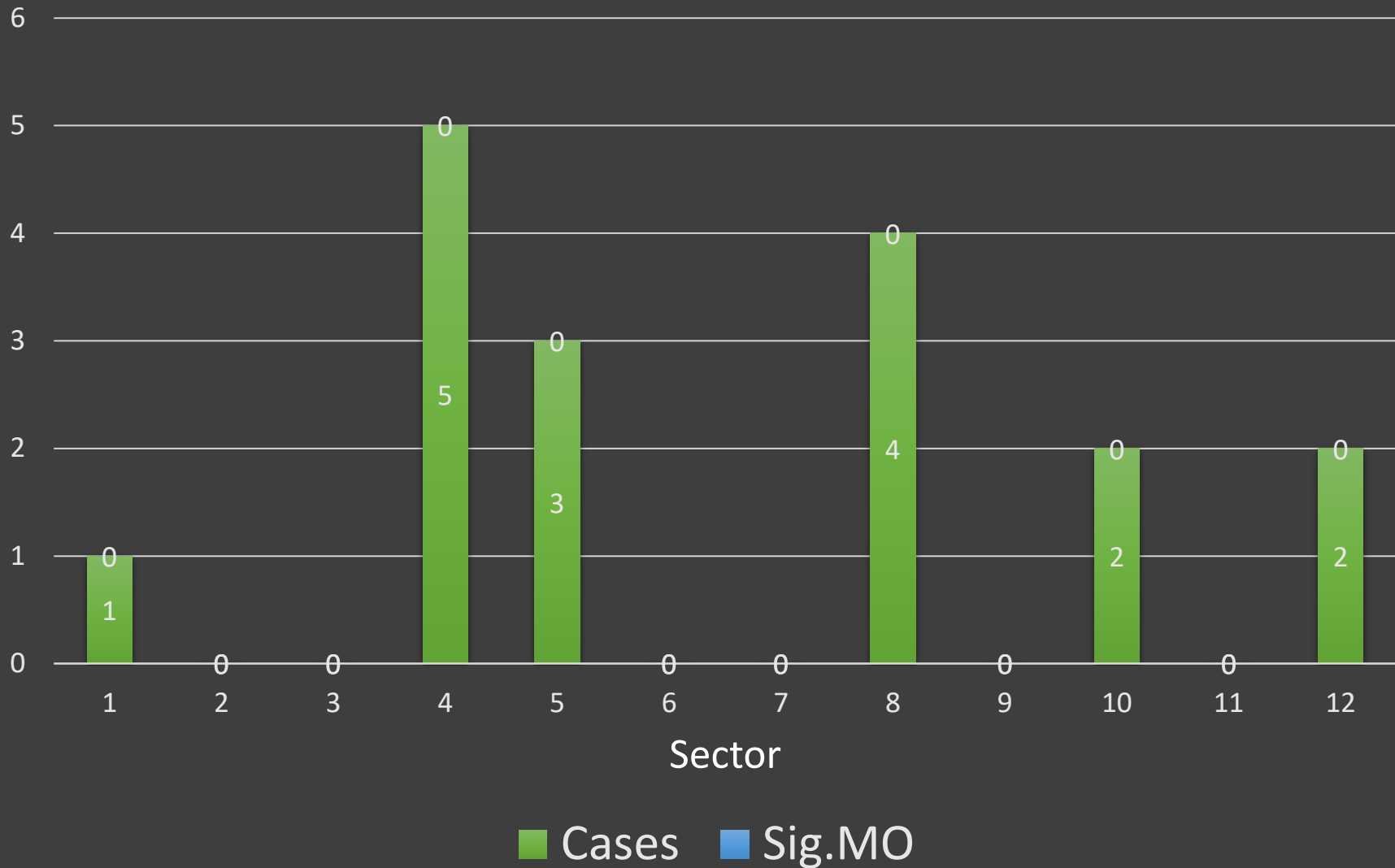
Day/Time Breakdown Crim. Mischief September 2018



Appendix D – Larceny



Larceny by Sector September 2018



Day/Time Breakdown Larceny September 2018

