



## **Crime Analysis Annual Report 2018**

**Prepared by Det. Sgt. Kurt Fasulo #63**

TO: Office of the Chief

FROM: Det. Sgt. Kurt Fasulo #63

SUBJECT: Annual Crime Analysis Report for 2018

DATE: January 11, 2019

The annual report includes general information on **Part 1** and selected **Part 2** crimes reported and investigated by the Guilford Police Department. The report also includes information on motor vehicle enforcement, accidents, and alarm cases investigated by this agency from **January 1<sup>st</sup> 0000hrs, 2018 to December 31<sup>st</sup> 2359hrs, 2018**. A comparison on all information is also listed for the previous year.

### Calls for Service

During 2018 the Guilford Police Department received **11, 624** calls for service. Of these calls the following information has been formulated for your review. During the same period in 2017 there were **11,993** calls for service. This was a **3.08 % decrease** in calls for service from the previous year.

Please refer to Appendix A for a graphic representation of the crime totals by type.

### Burglary Cases

There was a total of thirty-two (**32**) burglaries reported during 2018. The majority of which were residential in nature. During the same period for 2017 there were thirty-one (**31**) reported burglaries in the jurisdiction. This was a **3.2% increase** from the previous year.

The commercial businesses on Boston Post Road were the most targeted areas for burglaries during the year of 2018. The numbers reflect this; however, the data is skewed due to a string of incidents in October in which a high number of businesses were targeted during the overnight hours. The graphs in **Appendix B** provide the data on all reported burglaries. With the aforementioned October Route 1 burglaries taken into consideration, there was no pattern developed during analyzation of the data.

### Criminal Mischief Cases

There was a total of one hundred and eleven (**111**) criminal mischief complaints reported during this period. The majority of which were private property and/or mailbox damage. During the same period for 2017 there were one hundred and forty-seven (**147**) cases reported. This was a **24.5% decrease** from the previous year.

Sector 8 was identified as a consistently targeted area for criminal mischief throughout 2018 and patrols were advised to saturate the area during suspected times of occurrence.

While the graphs indicate that the crimes are occurring during the B shift, in the early morning to mid-afternoon hours; these are the times the incidents are being reported and do not accurately reflect the time the crimes are occurring.

Refer to Appendix C for a graphic representation of the cumulative number for 2018.

### *Larceny Cases*

There was a total of two hundred and sixty-two (**262**) larceny complaints filed during this period. The majority of which were classified as general larceny, larcenies from vehicles and shopliftings. Thefts from unlocked motor vehicles during the overnight hours remain a significant problem and a focus of concern for the Guilford Police Department. GPD continues to correspond with the public in an effort to educate on the severity of this problem using social media platforms as well as personal interactions. Area departments also continue to work closely in an effort to identify offenders and develop response plans.

The larceny data shows that Sector 8 and Sector 12 are the most consistently targeted areas for larceny. Similar to the data presented in criminal mischief, the B shift saw a majority of the larceny complaints. The times depicted in the graph are not entirely accurate as a significant amount are representative of the time the complaint was made. These would be used in those instances in which the exact date and time of the crime are unknown.

There were no identifiable patterns when analyzing the larceny data. There was a pattern for consistency with which larcenies from motor vehicle were being encountered, however there was no consistency geographically nor chronologically.

In total there were four hundred and forty-four (**444**) total larceny-related complaints made during 2018. This figure reflects identify theft cases and fraud cases in addition to the previously detailed conventional larceny types. In many of the fraud cases there was no loss experienced or the victim was reimbursed by the financial institution.

During the same period for 2017 there were four hundred and thirty-three (**433**) cases reported. This is a **2.5% increase** from the previous year.

Please reference Appendix D for graphic representation of this data.

### *Motor Vehicle Enforcement*

There was a total of three thousand twenty-eight (**3028**) motor vehicle violations investigated during this period (to include radar/laser speed enforcement and DWI enforcement). During the same period for 2017 there were three thousand six hundred and fourteen (**3,614**) cases investigated. This was a **16.21% decrease** from the previous year.

Included in the above statistic, there were twenty-six (**26**) DWI arrests in 2018 (both alcohol and drug related) compared to forty-one (**41**) DWI arrests in 2017. This was a **36.58% decrease** from the previous year.

Not included in the above statistic, the Guilford Police Department also investigated one hundred thirty-eight (**138**) parking violations in 2018. There were one hundred eighteen (**118**) parking violations in 2017.

The 2018 total includes Driving While Intoxicated (**26**), Motor Vehicle Moving Violations (**1375**), Laser Enforcement (**121**), Radar Enforcement (**1489**), Marijuana Possession (**6**), and Controlled Substance Possession (**11**).

Please refer to Appendix E for a graphic representation of the above information.

### **Motor Vehicle Accidents**

There was a total of five hundred and ninety-five (**595**) motor vehicle accidents investigated in 2018. There was one (**1**) fatal accident. During the same period for 2017 there were seven hundred sixty-seven (**767**) motor vehicle accidents investigated, none of which were fatal. The total **decrease** in motor vehicle accidents was **22.42%** overall. Included in both sums are cases in which the responsible party evaded responsibility.

During 2018 there were two hundred and eighty (**280**) child safety seats installed by officers of this department. During the same period for 2017 there were two hundred and fifty-three (**253**) child safety seats installed. This is a **10.67% increase** from the previous year.

### **Narcotics/Drugs**

There was a total of forty-three (**43**) drug related cases investigated during this period. During the same period for 2017 there were fifty (**50**) cases investigated. This represents an overall **decrease** of **14%** for narcotics related investigations.

### **Sex Crimes Cases**

There were a total of fifteen (**15**) sex crime related cases investigated during this period. During the same period for 2017 there were sixteen (**16**) cases investigated.

### **Robbery Cases**

There were no (**0**) robbery cases investigated during 2018 nor 2017.

### **Alarms - All Types**

The department responded to a total of one thousand two hundred eighty-one (**1,281**) alarms during 2018. During the same period for 2017, the department responded to a

total of one thousand four hundred (1,400) alarms. This is an **11.57% decrease** from the previous year.

**Murder Cases**

None reported

**Arson Cases**

There was one (1) arson investigation during 2018. There were no reported arsons in 2017.

**Guilford Police Department Forensic Laboratory**

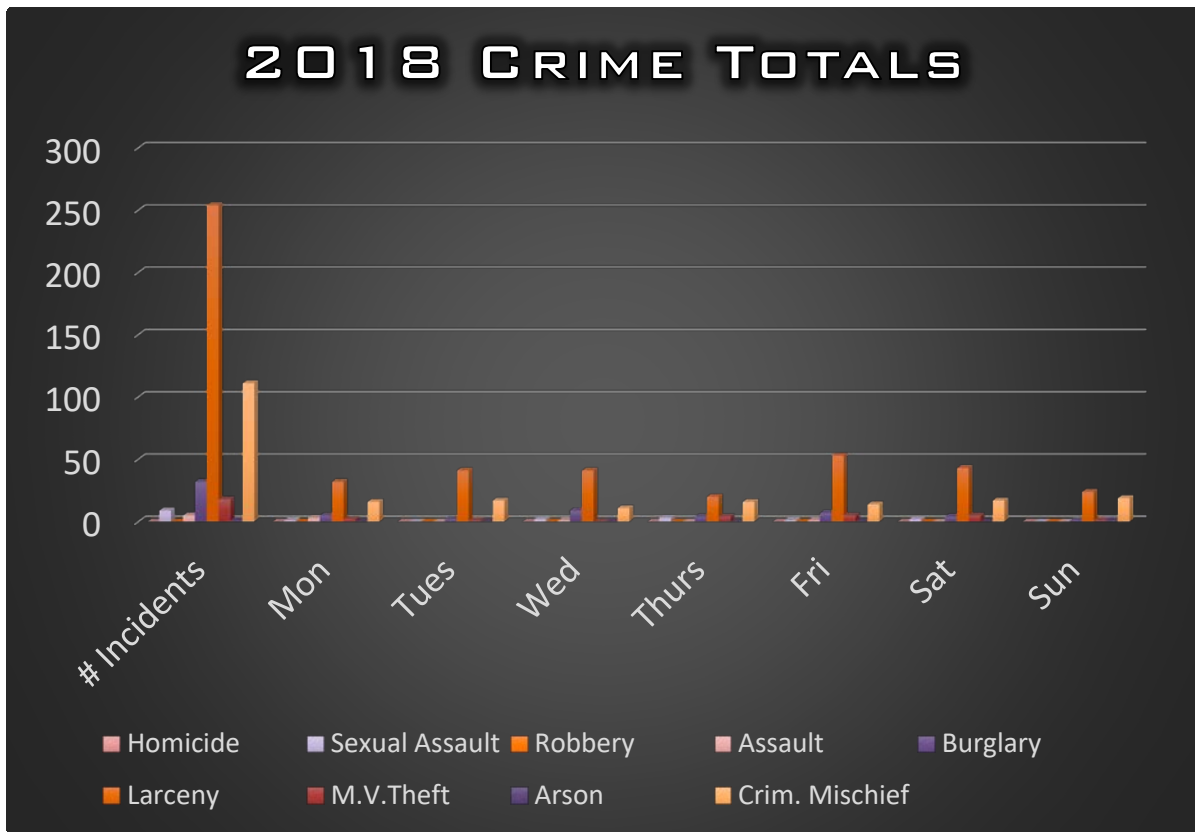
There were two hundred and nineteen (219) items of evidence processed in the Guilford Police Department Forensic Laboratory in 2018. Various methods were utilized in the analyzation of these evidence items. This figure does not include items processed in the field.

Respectfully submitted,

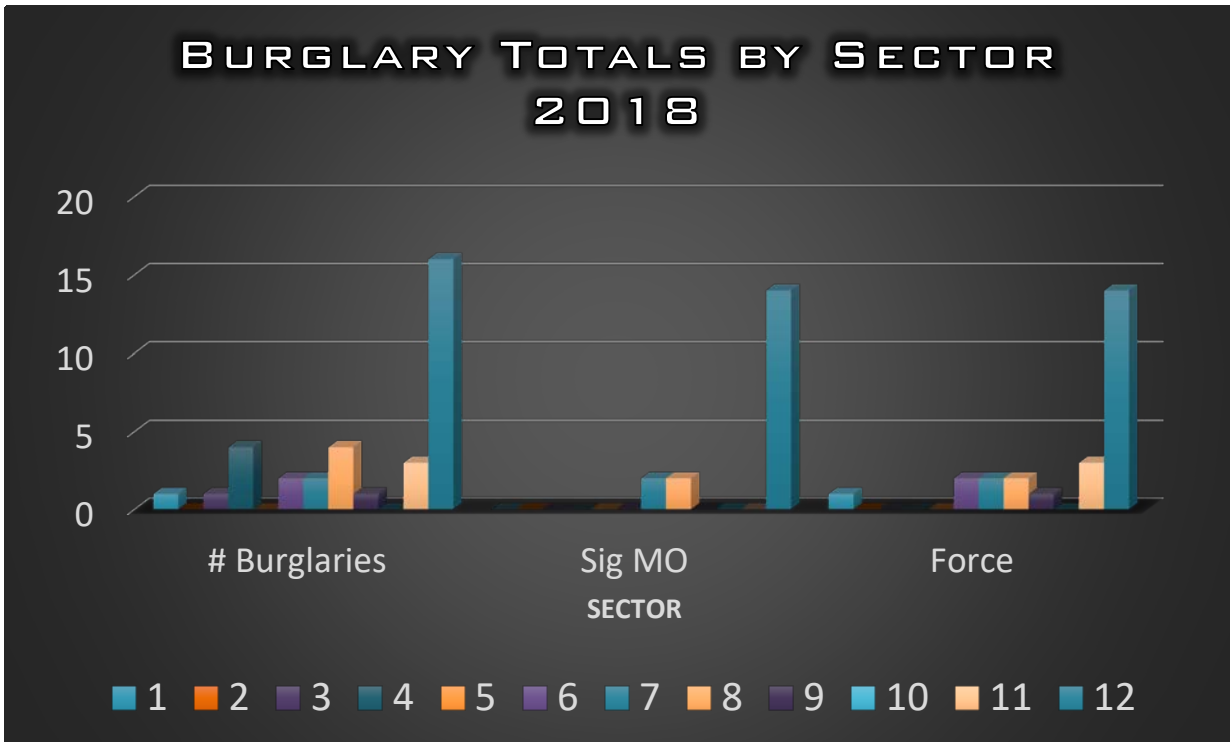
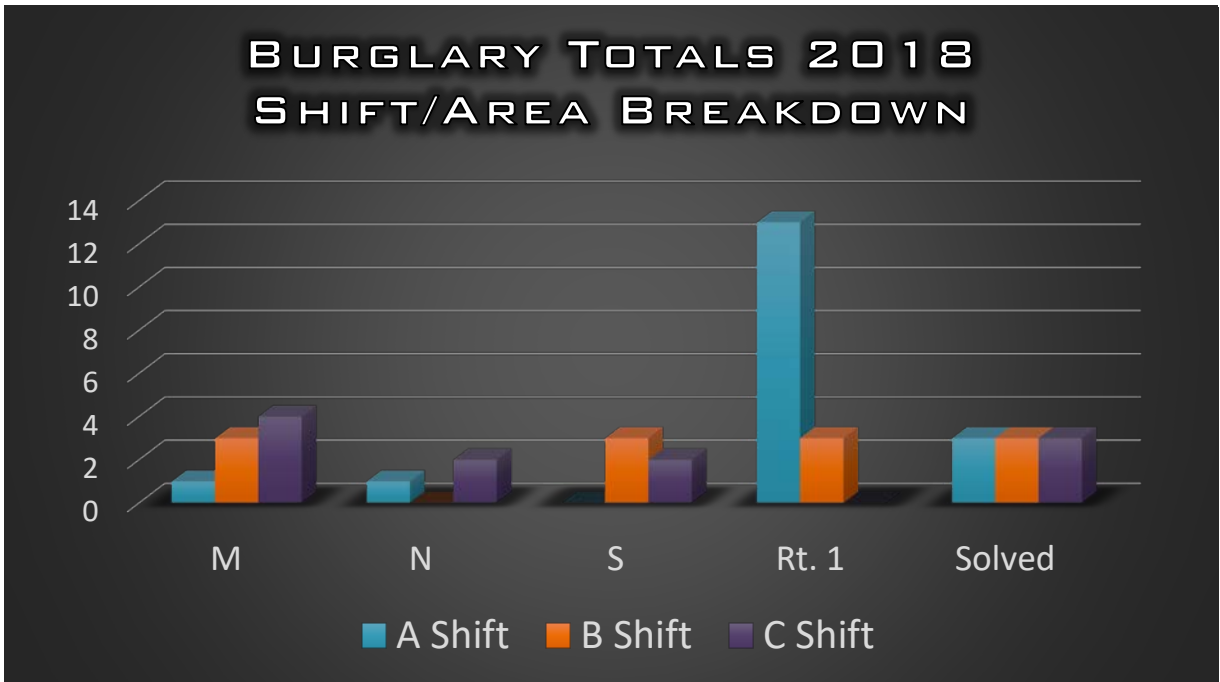
---

*Det. Sgt. Kurt Fasulo #63*  
*Detective Unit Supervisor*

# Appendix A

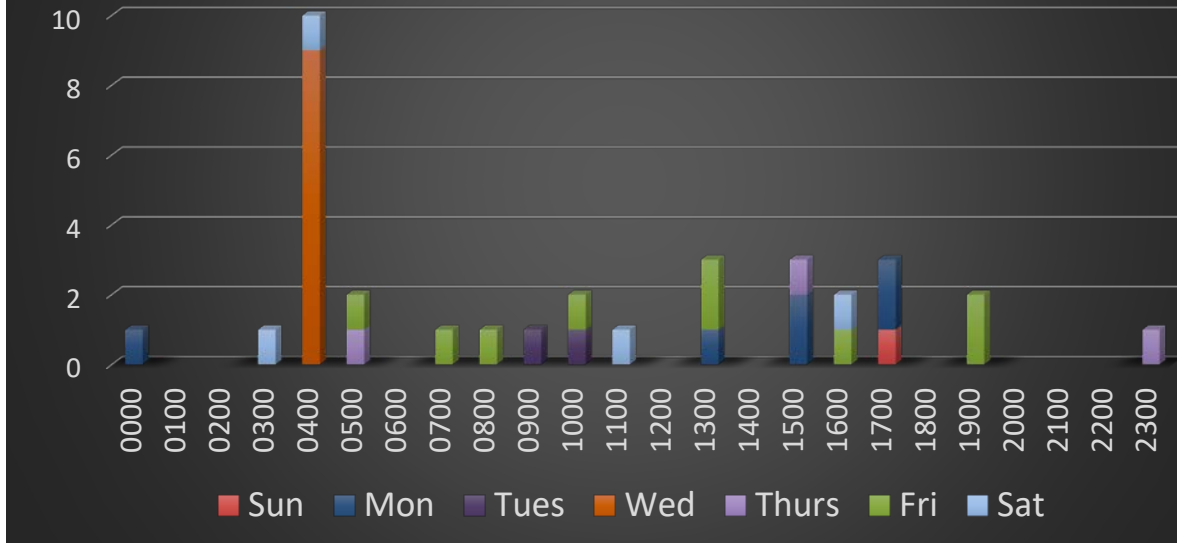


# Appendix B



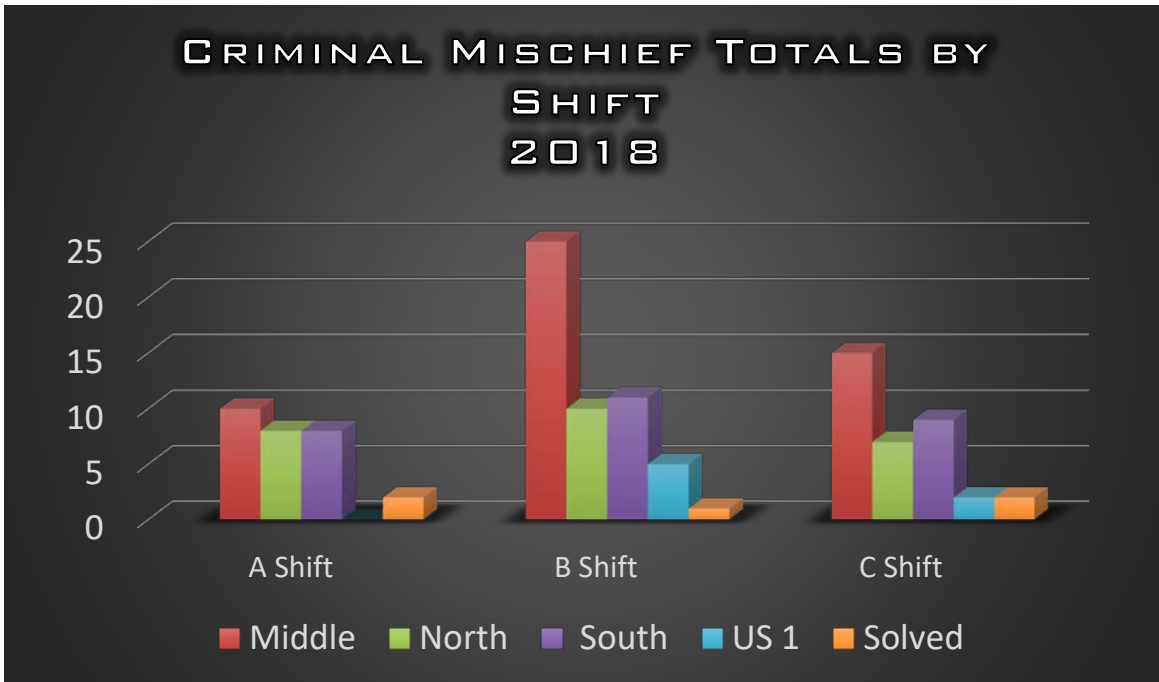
# BURGLARY TOTALS 2018

## DAY/TIME BREAKDOWN

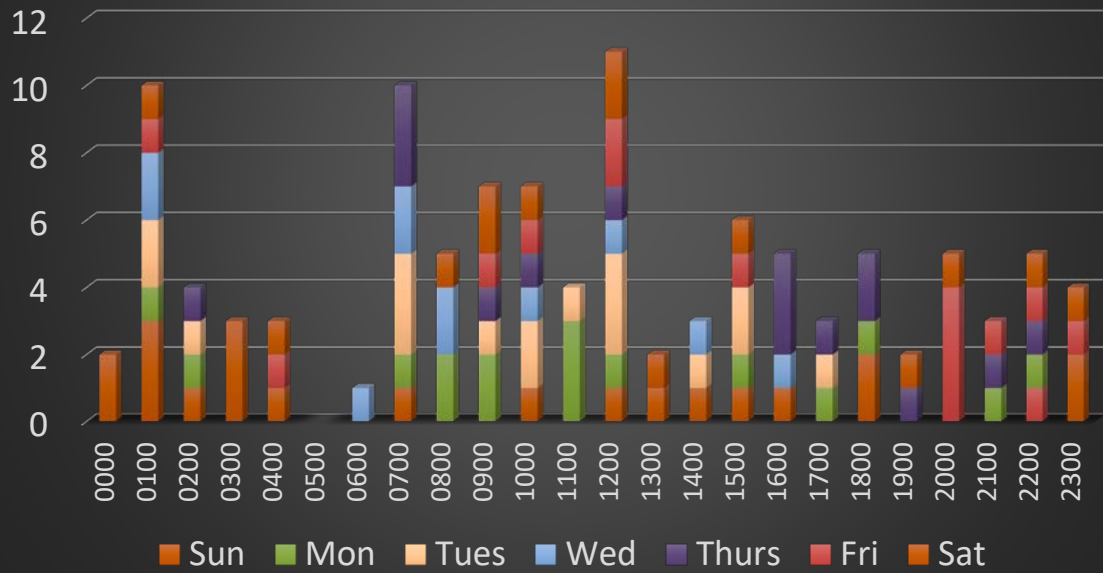




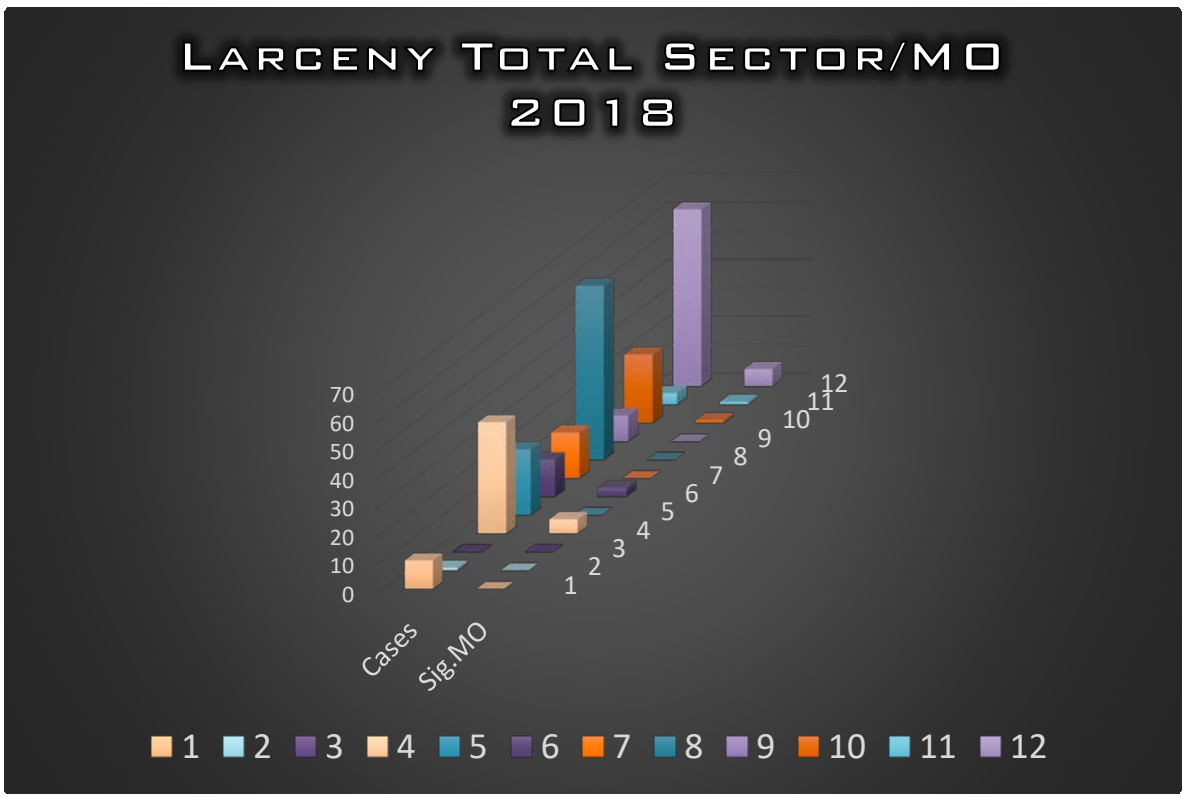
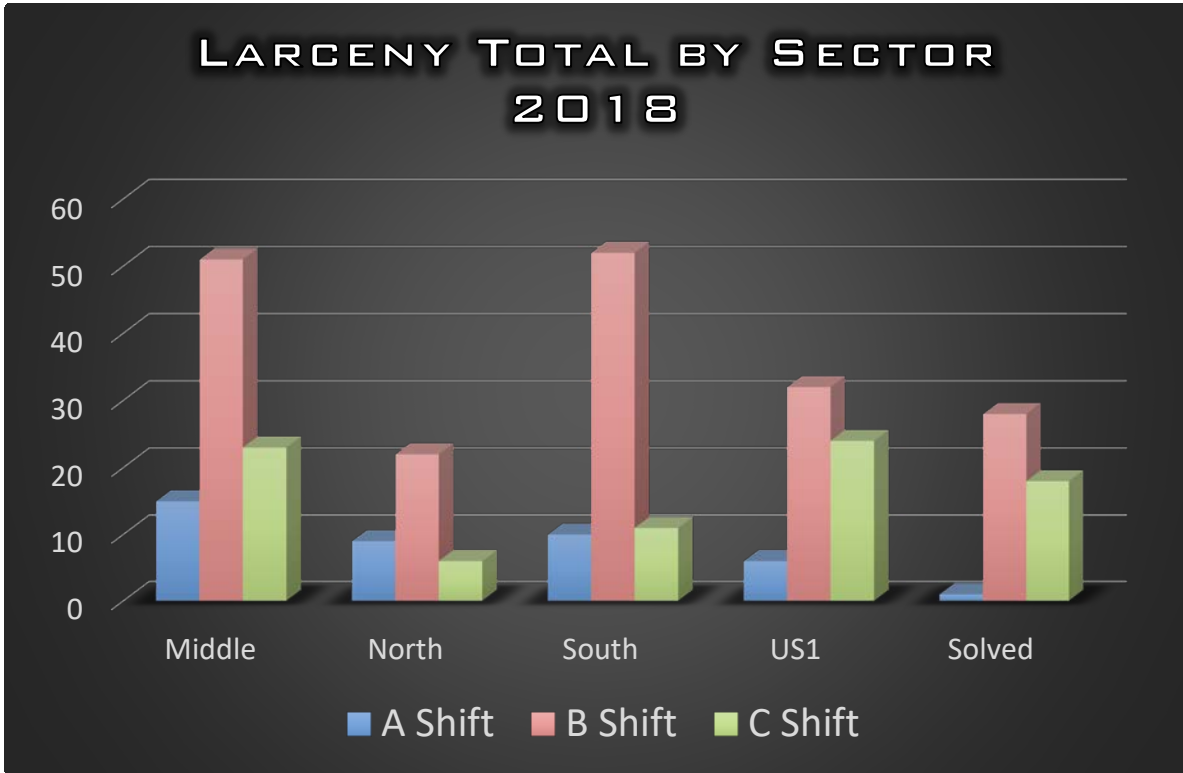
# Appendix C



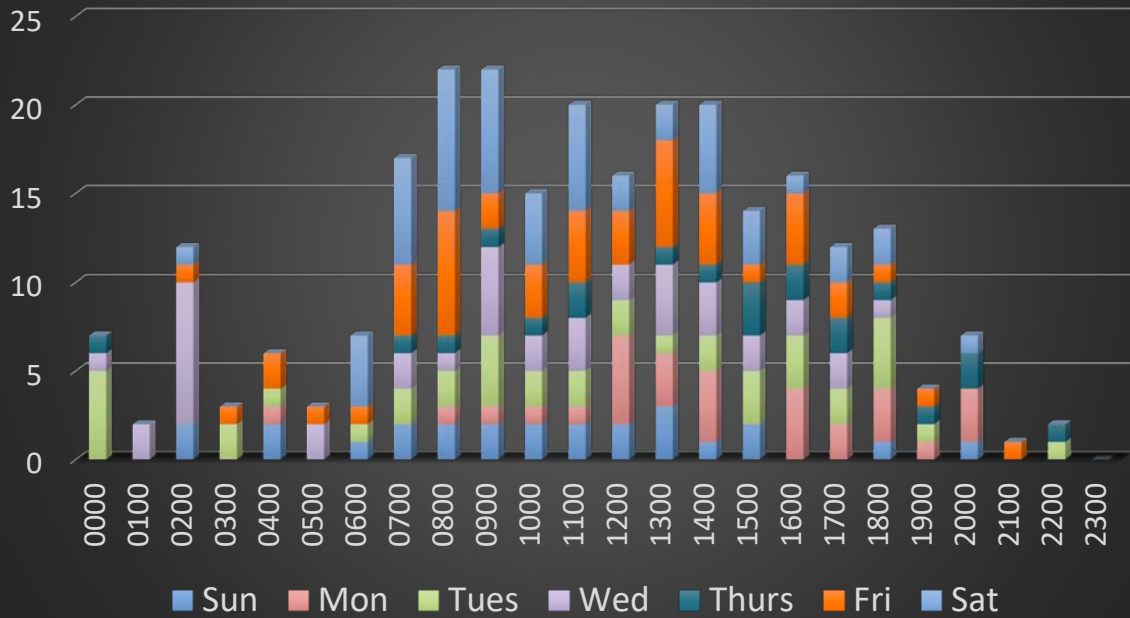
# CRIMINAL MISCHIEF TOTALS 2018 DAY/TIME BREAKDOWN



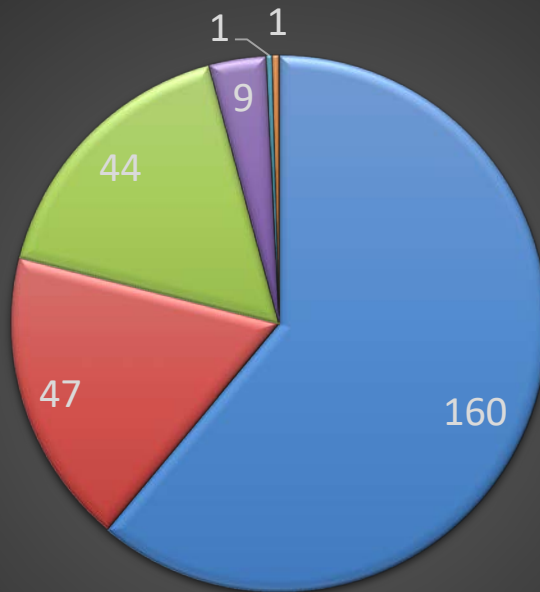
# Appendix D



## LARCENY BREAKDOWN DAY/HOUR 2018



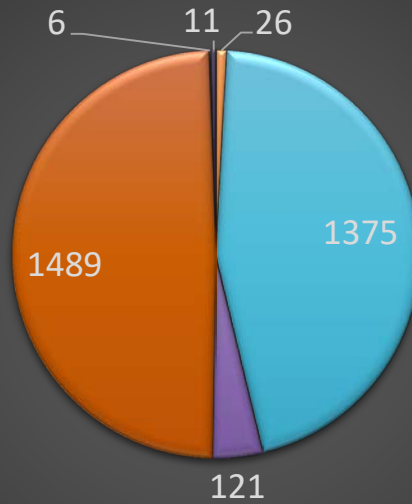
## 2018 TOTALS BY LARCENY TYPE



- Theft from Motor Vehicle
- Shoplifting
- General Larceny
- Theft from Residence
- Bad Check
- Fraud with Credit Card

# Appendix E

## MOTOR VEHICLE ENFORCEMENT TOTALS 2018



- Driving While Intoxicated
- Motor Vehicle Violation
- Laser Enforcement
- Radar Enforcement
- Marijuana Possession
- Controlled Substance Possession