



# **Crime Analysis Report December 2018**

**Det. Sgt. Kurt Fasulo #63**

CALEA 15.3.1

# Table of Contents

Crime Analysis Definition.....	3
Crime Analysis Narrative Report.....	4
Appendix A (Crime Graph).....	7
Appendix B (Burglary Graphs).....	8
Appendix B (Criminal Mischief Graphs).....	11
Appendix C (Larceny Graphs) .....	14

## Crime Analysis

A set of systematic, analytical processes directed at providing timely and pertinent information relative to crime patterns and trend correlations to assist the operational and administrative personnel in planning the deployment of resources for the prevention and suppression of criminal activities, aiding the investigative process, and increasing apprehensions and the clearance of cases. Within this context, Crime Analysis supports a number of department functions including patrol deployment, special operations, and tactical units, investigations, planning and research, crime prevention, and administrative services (budgeting and program planning). --Steven Gottlieb et al., 1994, "Crime Analysis: From First Report to Final Arrest."

*TO: Office of the Chief of Police*

*FROM: Det. Sgt. Kurt Fasulo #63*

*SUBJECT: Crime Analysis Report December 2018*

*During the month of December 2018, the Guilford Police Department had the following **Part 1** and selected **Part 2** Crimes reported: Reference Appendix A for further information. This information was compiled via the NEXGEN system utilizing a query of all Part 1 Crimes and select Part 2 crimes from the computer database. A full review of each queried case file report was completed.*

The Guilford Police Department investigated 825 cases for the month of December. This is a twenty percent (20%) decrease in calls from the previous month.

### **Burglary Cases**

There were seven (7) reported burglaries for the month of December. This is an increase from the one (1) reported case in November. Four of these burglary cases were committed by a suspect who has been identified. This department is in the process of submitting an arrest warrant application for that individual. Two of the remaining burglaries were to structures which were not securable. The remaining burglary was an unforced incident in which items were stolen from a vacation rental by owner. One of the suspects for that incident has been identified and the case remains ongoing. The exact date and time of three of these burglaries are unknown and thus the time the complaint was received is reflected in this report.

There were again cases of unlocked vehicles being entered and items stolen from within. These thefts from unlocked vehicle incidents would result in a criminal charge of burglary, however for reporting purposes those cases can be found in the larceny section of this report.

Reference Appendix B for a graphic representation.

### **Criminal Mischief Cases:**

There was a total of six (6) criminal mischief cases filed for the month of December. This is an increase in criminal mischief cases from November in which there were four (4). Five (5) of the six (6) cases involved damage to private property; the remaining one (1) involved damage to public property.

The times and dates reported are depicted in the graphic representation. Five (5) of the six (6) reported incidents reflect the time the report was filed and not the time at which the

crime is being committed. These were reported after the damage was observed and the exact time and date of the occurrence is unknown.

There were no arrests made for criminal mischief in the month of December.

There was no pattern nor significant modus operandi established during analysis of these incidents and thus no response plan was developed.

Reference Appendix C for a graphic representation.

### **Larceny Cases:**

There were eighteen (18) larceny cases reported during the month of December. Eight (8) of the eighteen cases were solved. There was one arrest made as a result of these larceny cases. In two (2) solved cases the complainant no longer wished to pursue charges, once restitution was made. The remaining solved cases have resulted in active arrest warrants for the suspects.

The larceny types are as follows: seven (7) thefts from a motor vehicle, seven (7) shopliftings, and four (4) general larceny.

For nine (9) of these larceny cases the exact date and time that the larceny occurred has not been determined. Thus, the date and time shown reflects only that of the date/time reported. The larceny from motor vehicle cases typically are reported upon discovery of the entry by the vehicle owner. In some cases, the date/time can be inferred based upon information developed from related cases. The statistics are skewed to the B Shift and C Shift as these are the times when the complaints are made. However, nearly every larceny from motor vehicle case occurs during the overnight hours and can be attributed to the hours of the A Shift. For the month of December, three (3) of the seven (7) thefts from motor vehicle cases were confirmed to have occurred during the overnight hours between 2300 and 0700.

The number of larceny cases decreased from nineteen (19) in November to eighteen (18) in December.

The fraud cases for the month of December are as follows: Eleven (11) General Fraud, One (1) Fraud via Internet, and two (2) Fraud with a Credit Card. These other fraud incidents all involved complainants who were reimbursed or did not experience any loss, thus these cases are not included in the monthly totals for larceny cases.

The thefts from motor vehicle larcenies all involved items being removed from unlocked motor vehicles. This department continues to educate the public on securing valuables through social media platforms. This issue continues to be a focal point for police departments throughout the state. Sector 9 was targeted during this timeframe for thefts from motor vehicle. A response plan has been developed and will be executed. It is likely

that these thefts from motor vehicle cases are directly linked to the burglaries as the suspect was residing in close proximity to the area affected.

Reference Appendix C for a graphic representation.

**Robbery Cases:**

None reported.

**Larceny of MV Cases:**

None reported.

**Aggravated Assault/Simple Assault:**

None reported.

**Arson Cases:**

None reported.

**Rape/Sex offense Cases:**

None reported.

**Homicide Cases:**

None reported.

**Information and Intelligence received on criminal activity:**

CTIC provided LEO intelligence during this month. The New England State Police Information Network also served as a source of intelligence as did the Law Enforcement Information Exchange (LInX). Guilford Police also monitors Crimedex Law Enforcement Portal for updated information on financial crime trends. Crime intelligence sharing is also monitored through New Haven Police Department's SLACK program.

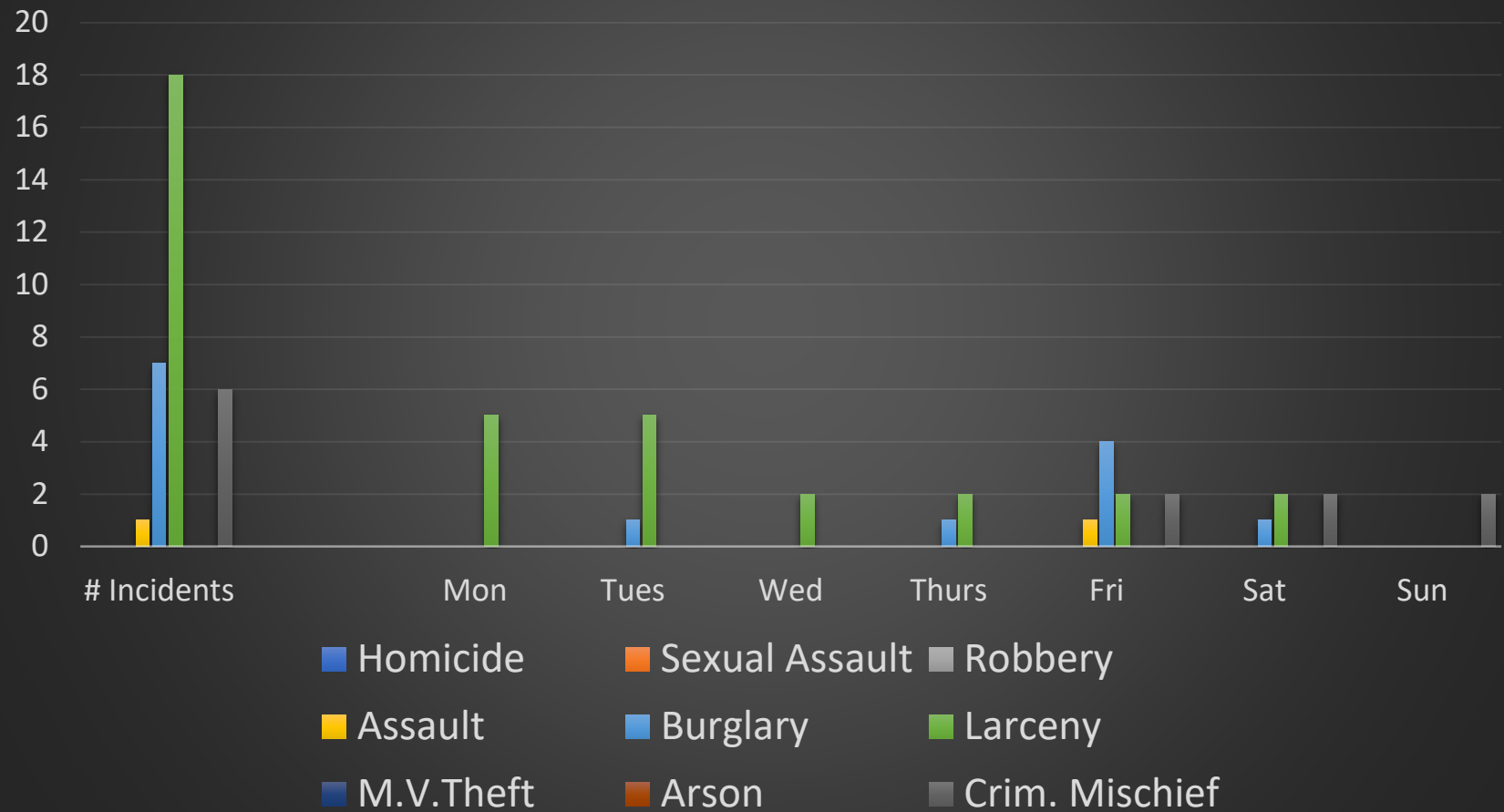
Intelligence meetings were held with the Middlesex County Detective Association and New Haven MDT in regard to ongoing criminal activity in all attending agencies' jurisdictions.

Respectfully submitted,

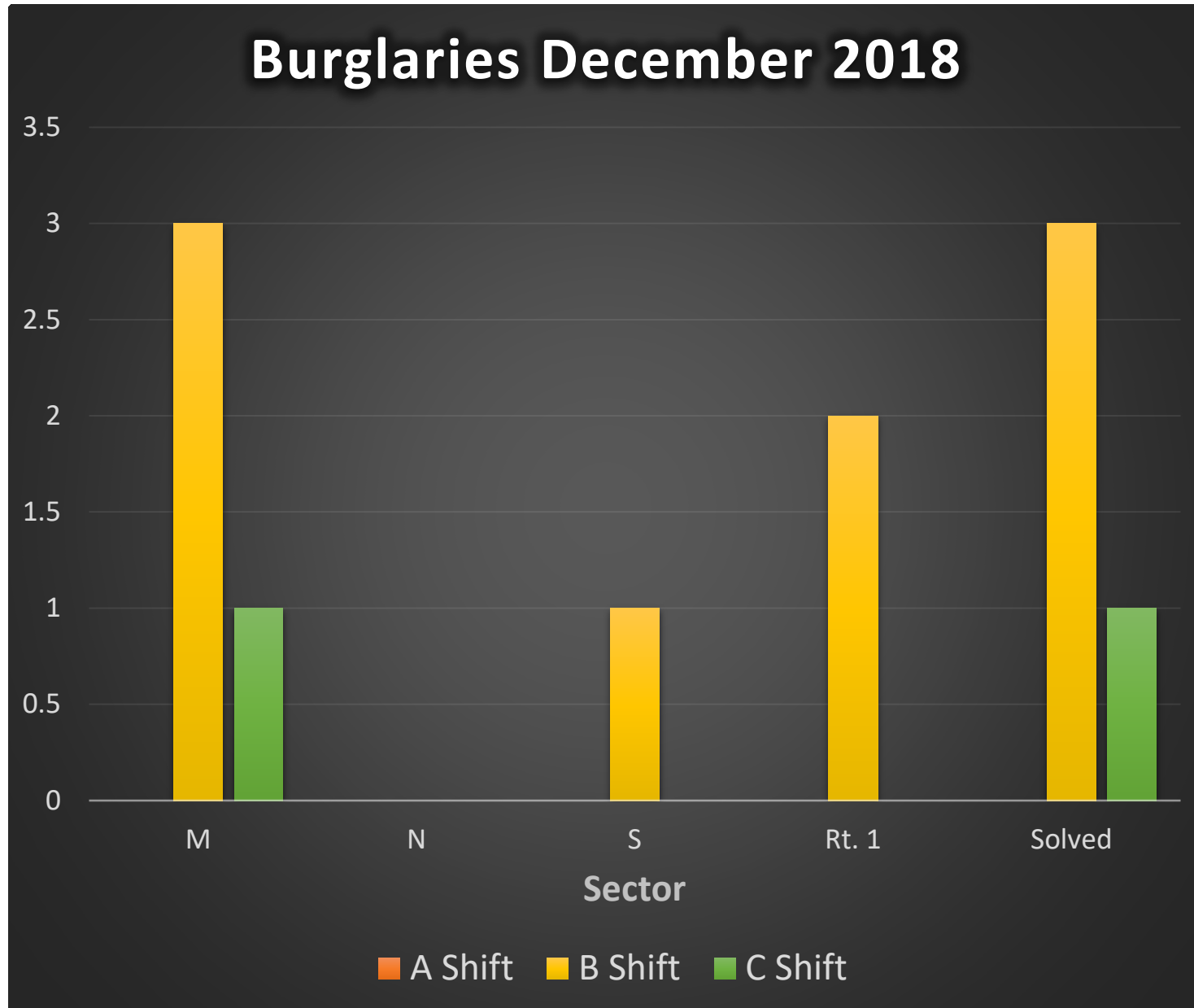
*Det. Sgt. Kurt Fasulo*

# Appendix A - Crime

## Crimes by Type/Day December 2018

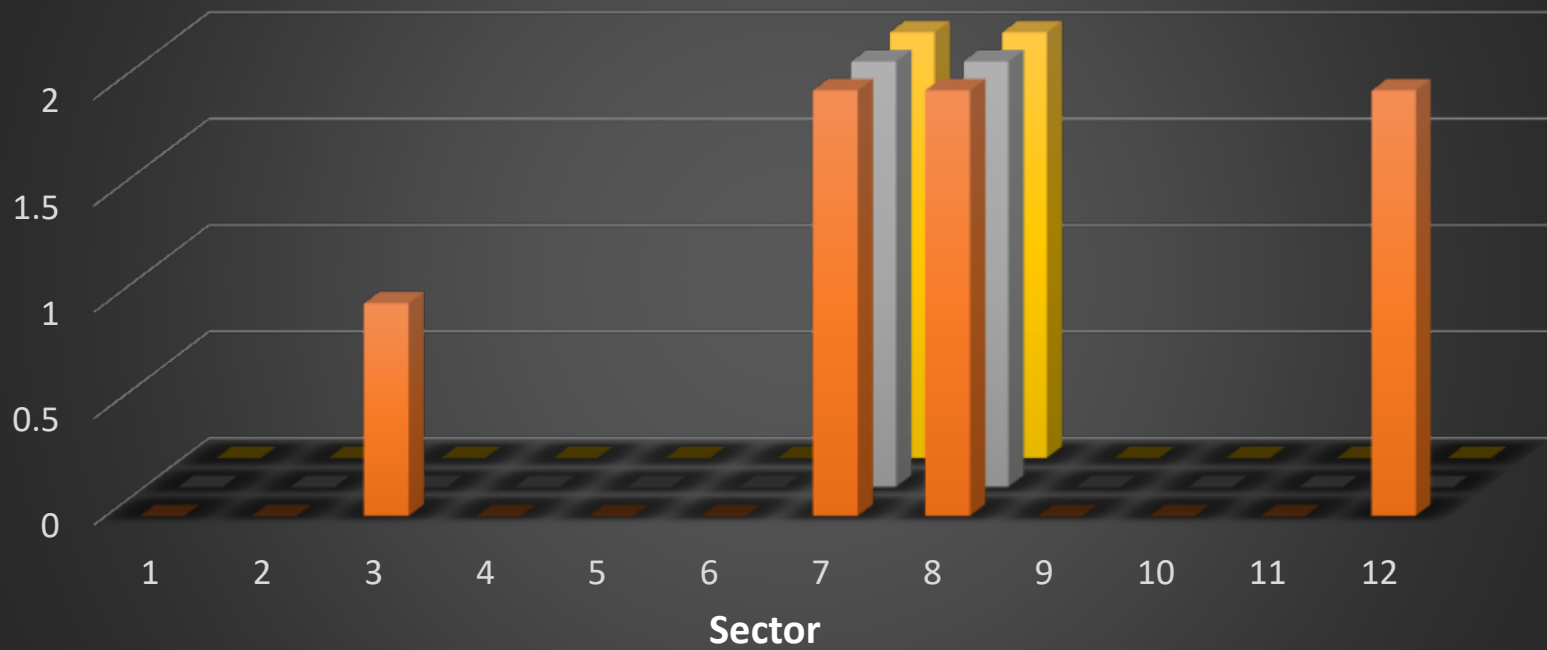


## *Appendix B – Burglary*



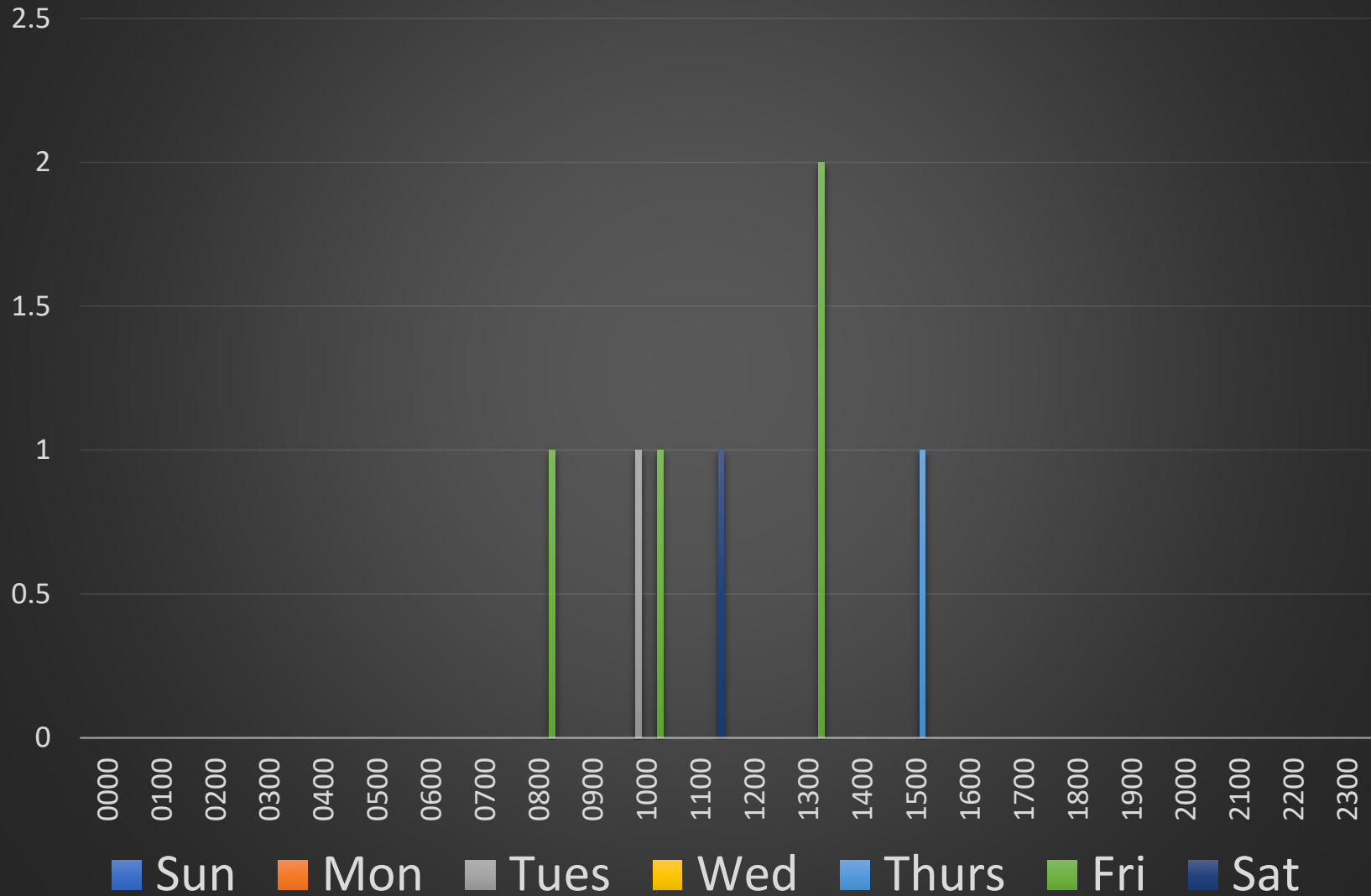


# Burglary Sector Breakdown December 2018

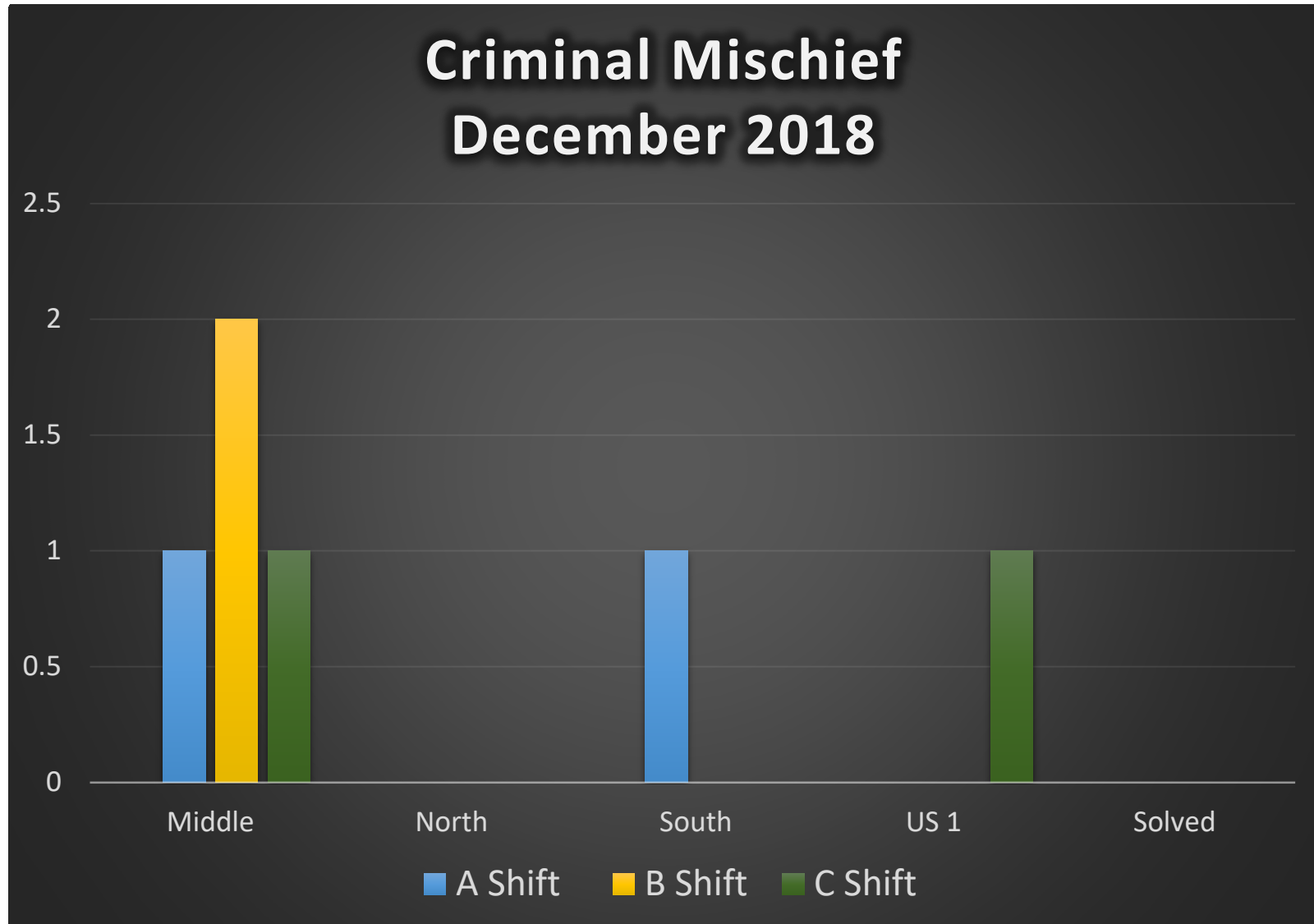


■ # Burglaries   ■ Sig MO   ■ Force

# Burglary Date/Time Breakdown December 2018

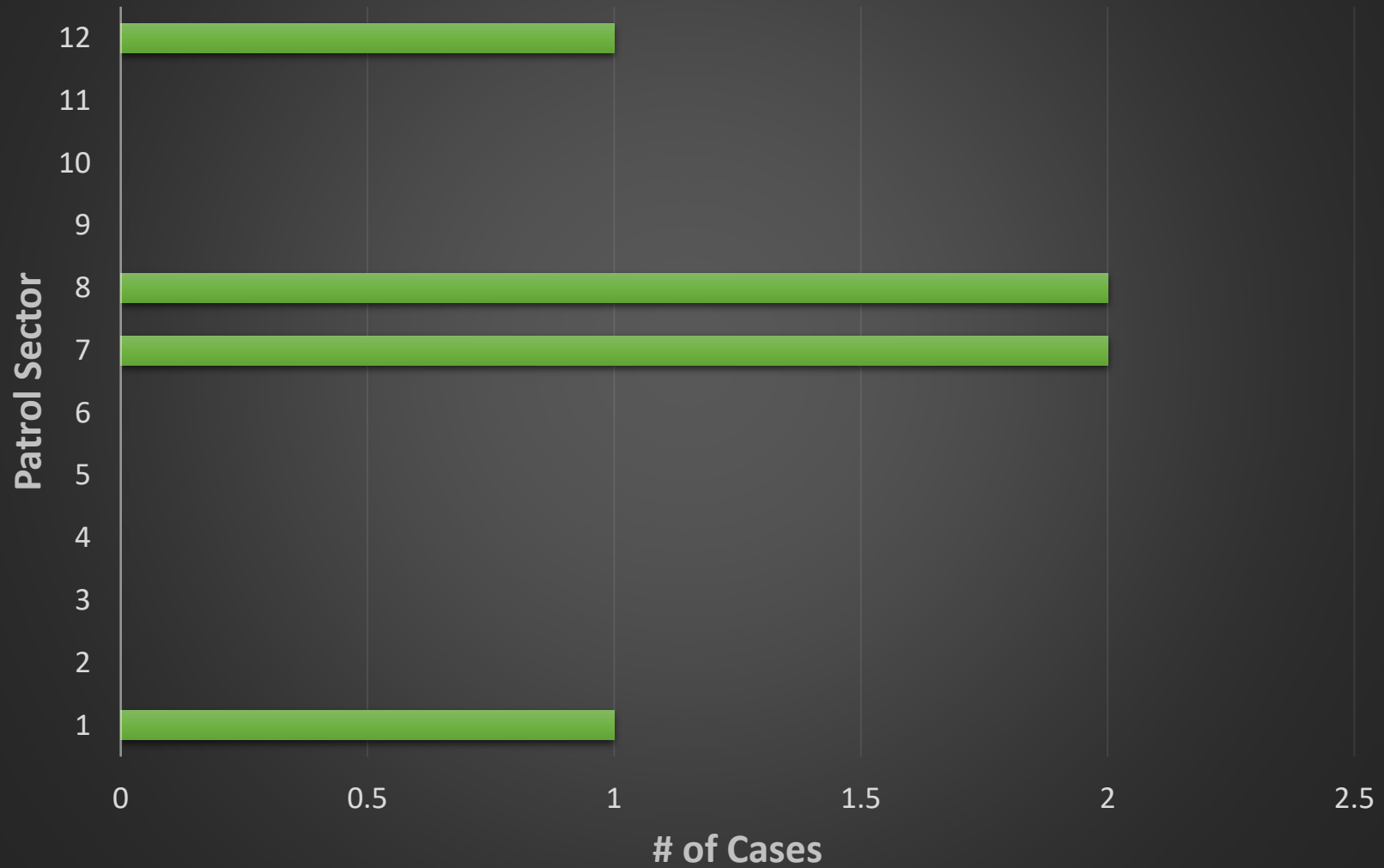


## *Appendix C - Criminal Mischief*

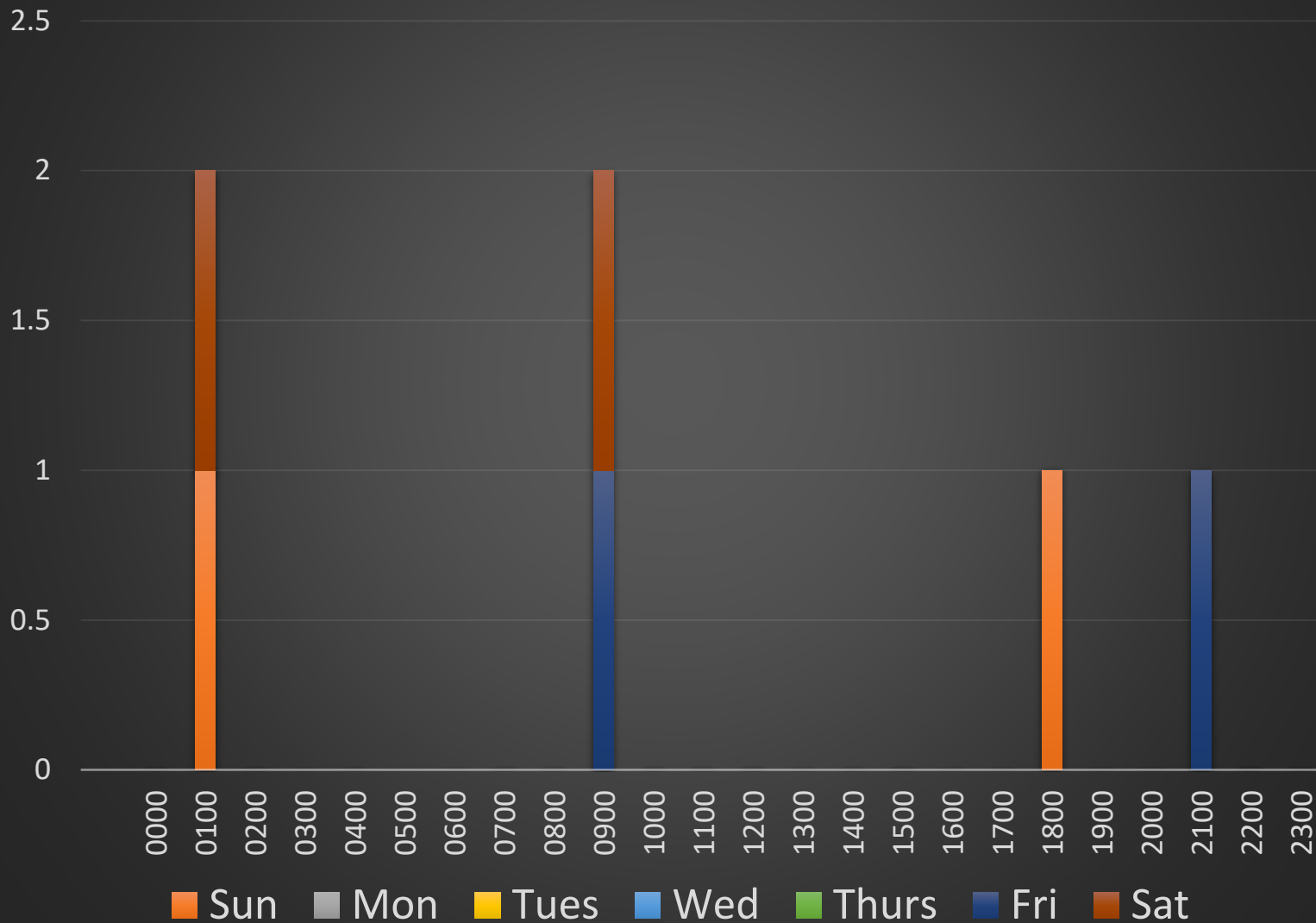


# Cases by Sector

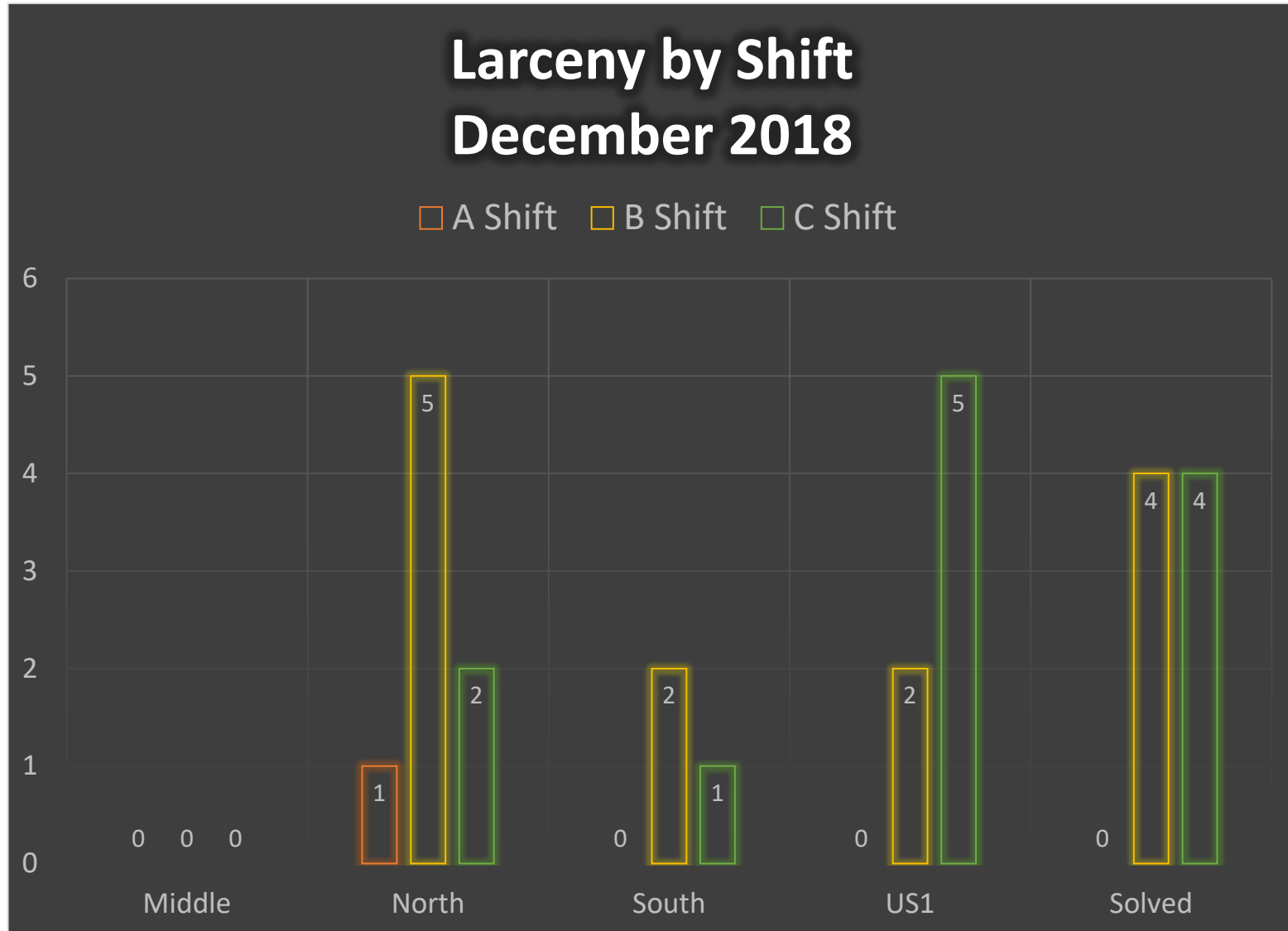
## Crim. Mischief - December 2018



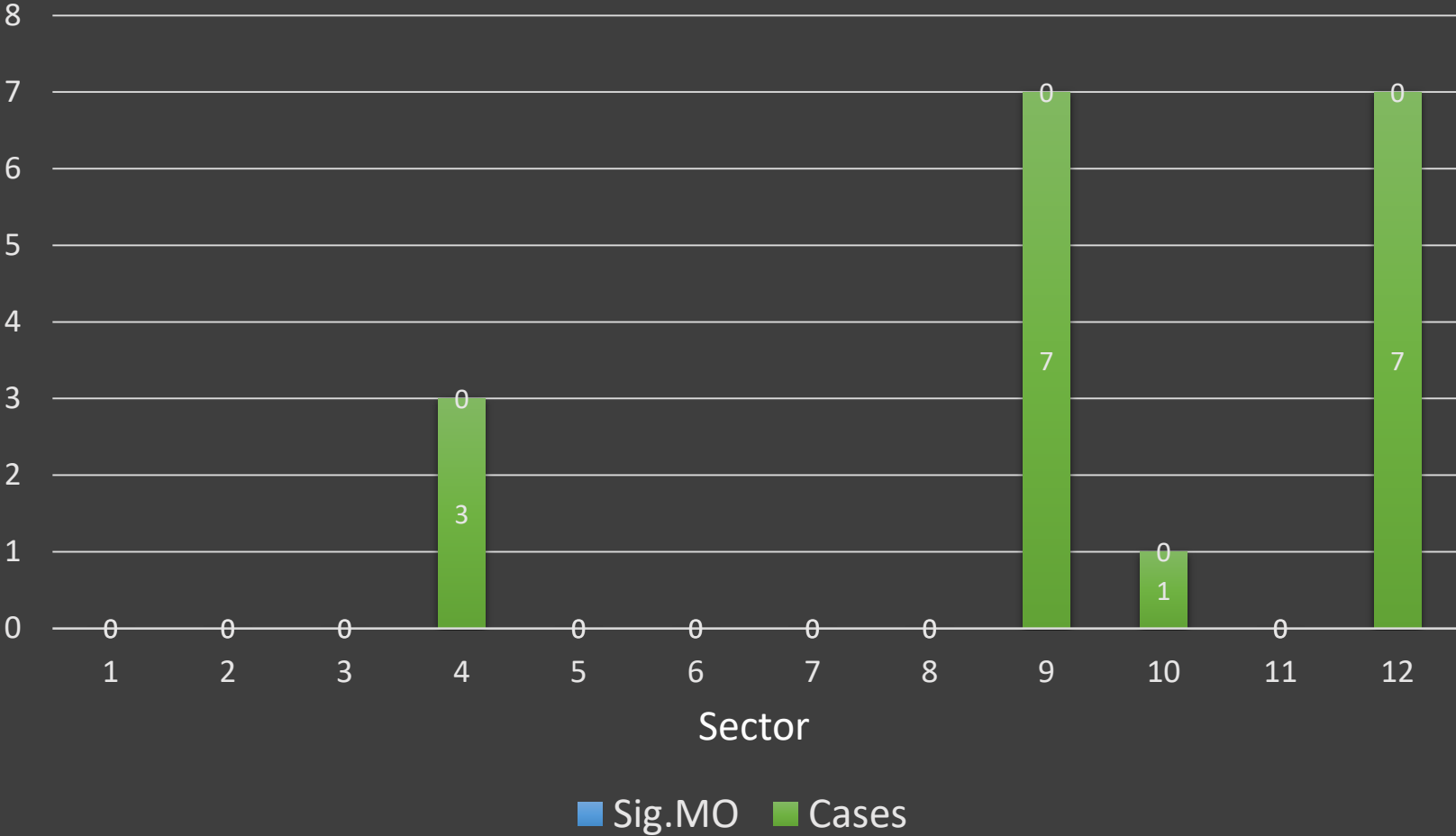
# Day/Time Breakdown Crim. Mischief December 2018



## Appendix D – Larceny



# Larceny by Sector December 2018



# Day/Time Breakdown Larceny December 2018

